



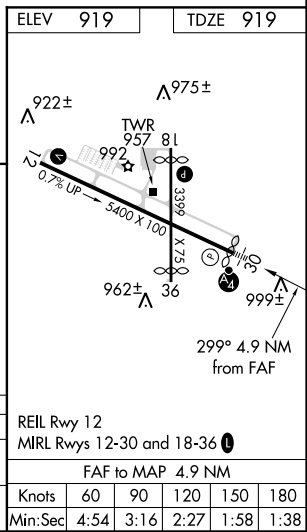
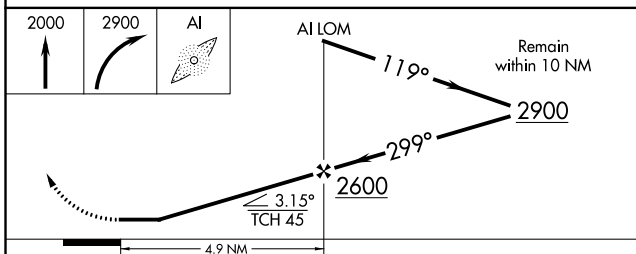
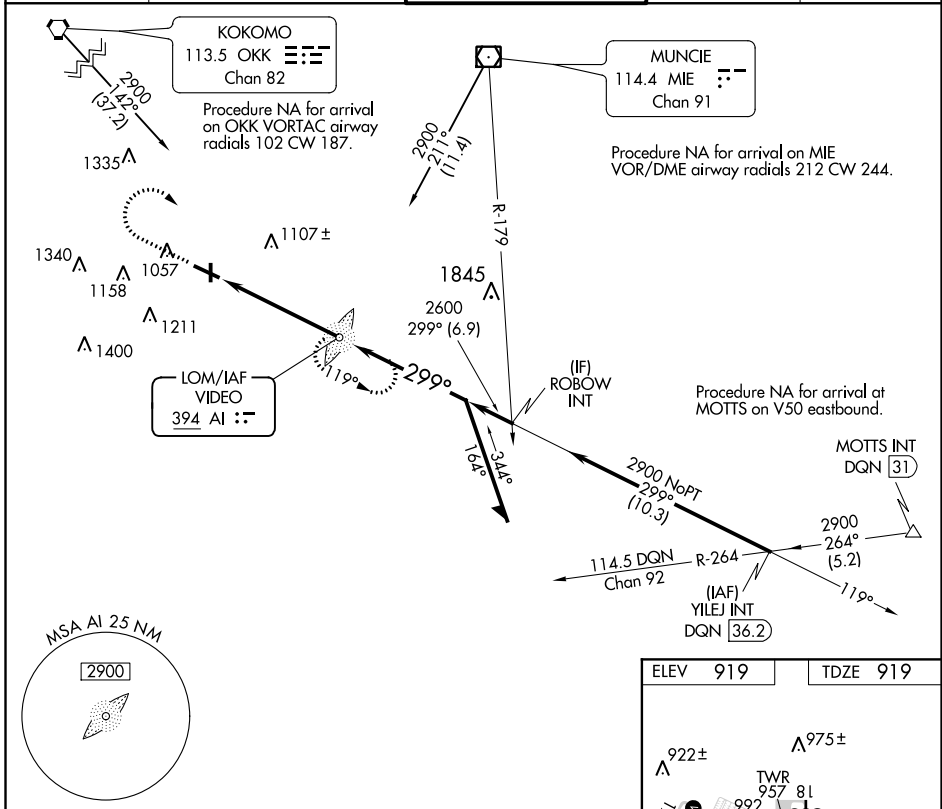
LOM AI <b>394</b>	APP CRS <b>299°</b>	Rwy Idg TDZE Apt Elev	<b>5320</b> <b>919</b> <b>919</b>
----------------------	------------------------	-----------------------------	---

# NDB RWY 30

ANDERSON MUNI-DARLINGTON FIELD (AID)

<b>⚠</b> Rwy 30 helicopter visibility reduction below 3/4 SM NA. Circling Rwy 12, 36 NA at night. For inop ALS, increase S-30 Cat C/D visibility to 1 3/4 SM.	<b>MAISF</b> 	<b>MISSED APPROACH:</b> Climb to 2000 then climbing right turn to 2900 direct VIDEO LOM and hold.
---	------------------	---

AWOS-3 <b>128.55</b>	INDIANAPOLIS APP CON <b>120.65 317.8</b>	ANDERSON TOWER ★ <b>126.0 (CTAF) 0</b>	GND CON <b>121.6</b>	UNICOM <b>122.95</b>
-------------------------	---	---	-------------------------	-------------------------



CATEGORY	A	B	C	D
S-30	1500-3/4 581 (600-3/4)		1500-1 3/8 581 (600-1 3/8)	
<b>C</b> CIRCLING	1500-1 581 (600-1)		1520-1 3/8 601 (700-1 3/8)	1520-2 601 (700-2)

EC-2: 07 DEC 2017 to 04 JAN 2018


EC-2: 07 DEC 2017 to 04 JAN 2018


WAAS CH <b>56415</b> <b>W30A</b>	APP CRS <b>298°</b>	Rwy Idg TDZE Apt Elev	<b>5320</b> <b>919</b> <b>919</b>
--	------------------------	-----------------------------	---

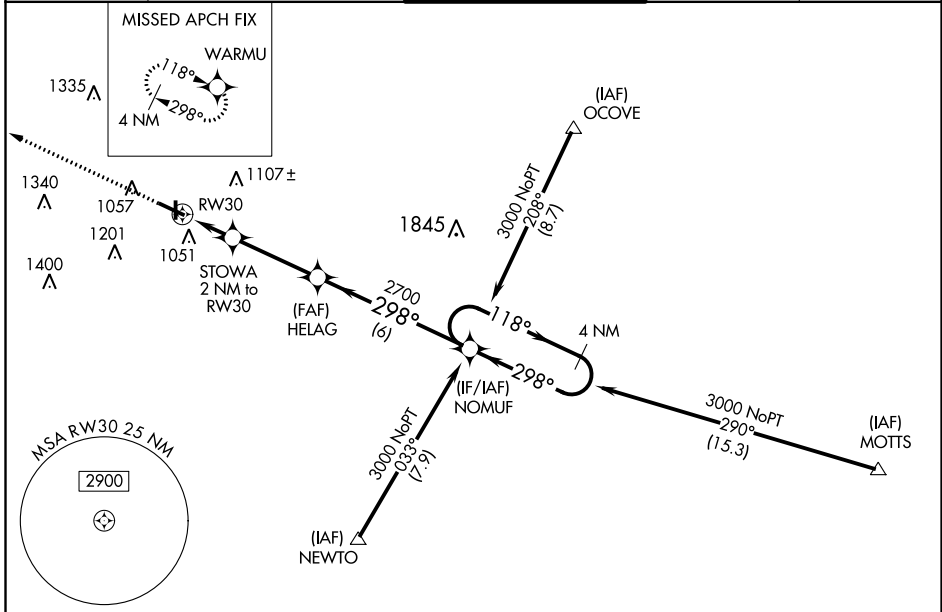
# RNAV (GPS) RWY 30

ANDERSON MUNI-DARLINGTON FIELD (AID)

**▼** Night landing: Rwy 36 NA. For uncompensated Baro-VNAV systems, LNAV/VNAV NA below -16°C (4°F) or above 47°C (116°F). DME/DME RNP-0.3 NA. Helicopter visibility reduction below ¼ SM NA. When local altimeter setting not received, use Muncie altimeter setting and increase all DA 32 feet and all MDA 40 feet, and increase LPV and LNAV/VNAV all Cats and LNAV Cat C visibility ¼ mile. Inoperative table does not apply.

**▲** MISLSF  MISSED APPROACH: Climb to 3000 direct WARMU and hold.

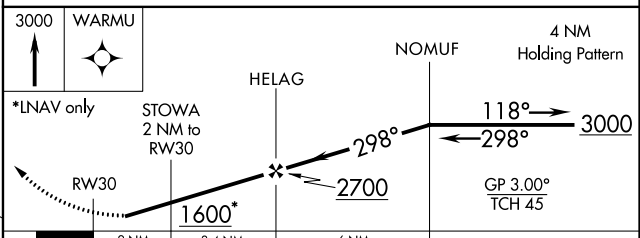
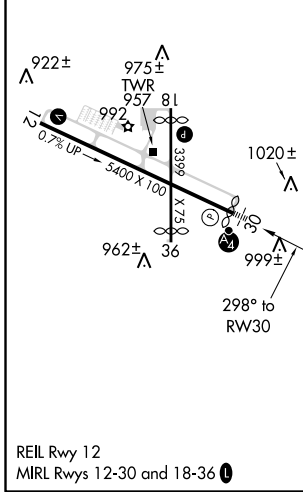
AWOS-3 <b>128.55</b>	INDIANAPOLIS APP CON <b>120.65 317.8</b>	ANDERSON TOWER * <b>126.0</b> (CTAF) 	GND CON <b>121.6</b>	UNICOM <b>122.95</b>
-------------------------	---	---	-------------------------	-------------------------



EC-2: 07 DEC 2017 to 04 JAN 2018

EC-2: 07 DEC 2017 to 04 JAN 2018

ELEV 919	TDZE 919
----------	----------



CATEGORY	A	B	C	D
LPV DA		1234-1	315 (400-1)	
LNAV/VNAV DA		1367-1½	448 (500-1½)	
LNAV MDA	1280-1	361 (400-1)		1280-1½ 361 (400-1½)
CIRCLING	1360-1 441 (500-1)	1400-1 481 (500-1)	1400-1½ 481 (500-1½)	1500-2 581 (600-2)