

(SHFTY.SHFTY2) 12320

ST-154 (FAA)

SHFTY TWO ARRIVAL (RNAV)

FORT MYERS, FLORIDA

FORT MYERS APP CON ★
 126.8 343.75
 PAGE FIELD ATIS
 123.725
 SOUTHWEST FLORIDA INTL ATIS ★
 124.65

ALMA TRANSITION (AMG.SHFTY2):
DUNKN TRANSITION (DUNKN.SHFTY2):
HIBAC TRANSITION (HIBAC.SHFTY2):

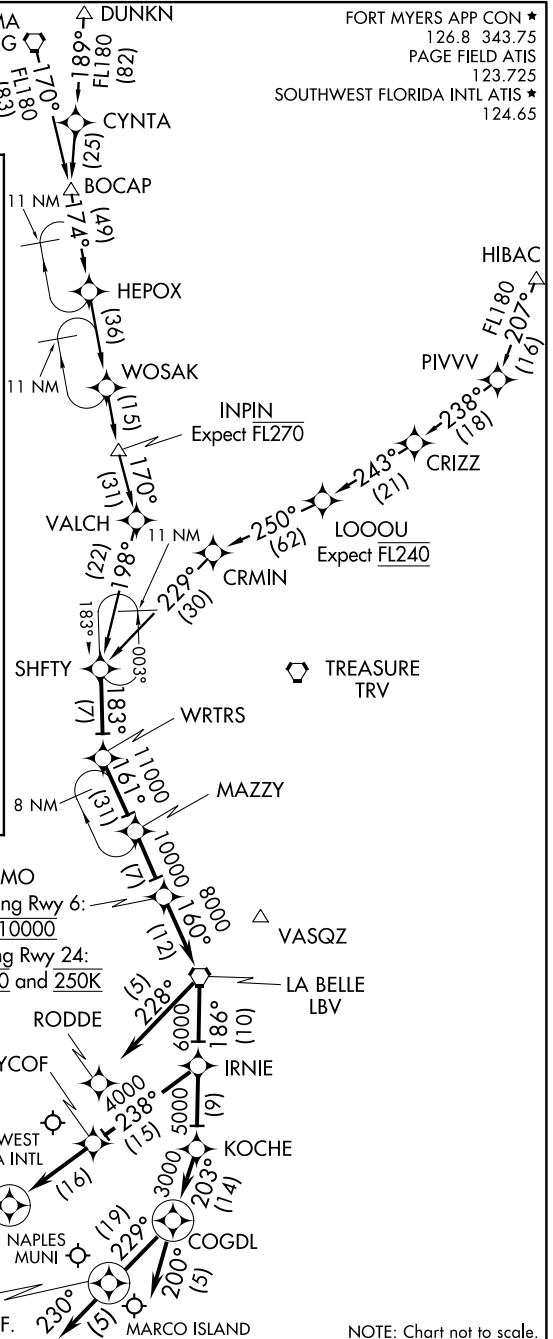
From over SHFTY via 183° track to WRTRS, then via 161° track to MAZZY, then via 161° track to MOEMO, then via 160° track to LBV VORTAC, thence....

Landing RSW Rwy 6 and FMY: From over LBV VORTAC via 186° track to IRNIE, then via 238° track to WYCOF, then via 238° track to PONTY, then via 240° heading. Expect radar vectors.

Landing RSW Rwy 24: From over LBV VORTAC via 228° heading. Expect radar vectors.

Landing APF: From over LBV VORTAC via 186° track to IRNIE, then via 186° track to KOCHE, then via 203° track to COGDL, then via 229° track to TIOFF, then via 230° heading. Expect radar vectors.

Landing MKY: From over LBV VORTAC via 186° track to IRNIE, then via 186° track to KOCHE, then via 203° track to COGDL, then via 200° heading. Expect radar vectors.



NOTE: RADAR Required.

NOTE: DME/DME/IRU or GPS Required.

NOTE: RNAV 1.

NOTE: Turbojet/Turboprop aircraft only.

NOTE: For non-GPS equipped aircraft, LBV and RSW must be operational.

RSW Landing Rwy 6:
 Expect 10000

RSW Landing Rwy 24:
 Expect 10000 and 250K

PONTY
 Expect 4000

Aircraft Landing APF:
 Expect radar vectors prior to TIOFF.

NOTE: Chart not to scale.

SHFTY TWO ARRIVAL (RNAV)

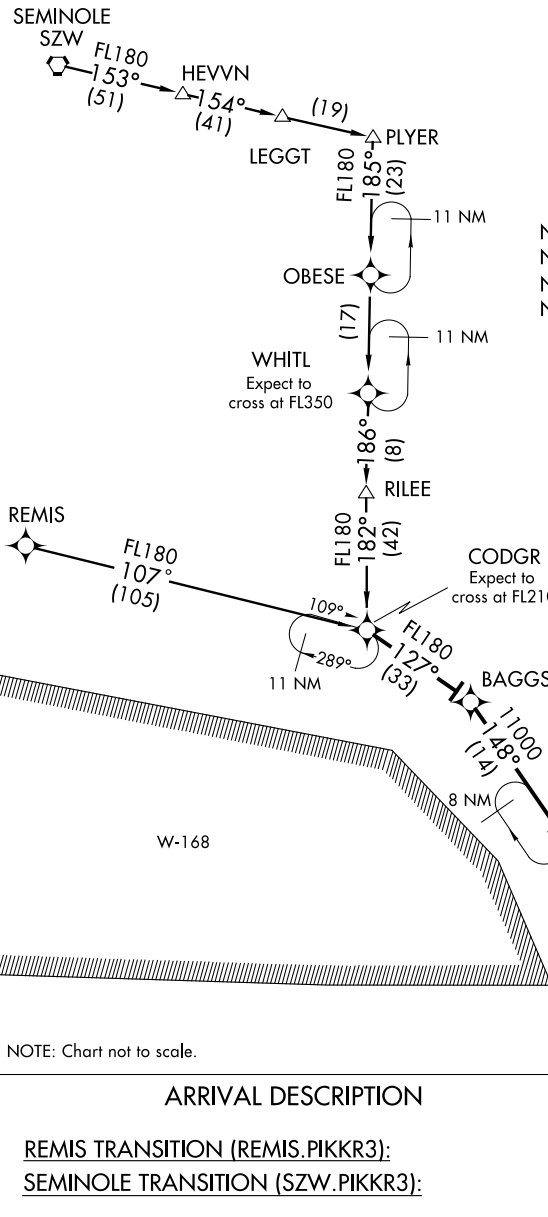
FORT MYERS, FLORIDA

(SHFTY.SHFTY2) 12320

SE-3, 09 NOV 2017 to 07 DEC 2017

SE-3, 09 NOV 2017 to 07 DEC 2017

★ FORT MYERS APP CON
125.15 306.2
NAPLES MUNI ATIS
134.225



NOTE: Radar Required.
NOTE: GPS Required.
NOTE: RNAV 1
NOTE: Turbojet/Turboprop aircraft only.

SE-3, 09 NOV 2017 to 07 DEC 2017

SE-3, 09 NOV 2017 to 07 DEC 2017

NOTE: Chart not to scale.

ARRIVAL DESCRIPTION

REMIS TRANSITION (REMIS.PIKKR3):
SEMINOLE TRANSITION (SZW.PIKKR3):

From over CODGR via 127° track to BAGGS, thence as depicted to ISAJY, then via 150° heading. Expect radar vectors.

(ZEILR.ZEILR4) 16259

ZEILR FOUR ARRIVAL

ST-6020 (FAA)

NAPLES, FLORIDA

FORT MYERS APP CON*
125.15 306.2
NAPLES MUNI ATIS
134.225

ST. PETERSBURG
116.4 PIE
Chan 111
N27°54.47' - W82°41.06'
L-21-24, H-8

TAYLOR
112.9 TAY
Chan 76

TEPEE
N28°00.02'
W82°21.99'
H-8

NOTE: TEPEE Transition
NA for turbojet aircraft,
file for PIE TRANSITION.

SARASOTA
117.0 SRQ
Chan 117
N27°24.42' - W82°33.82'

LA BELLE
110.4 LBV
Chan 41

ZEILR
N26°38.22' - W82°22.46'
TURBOJET VERTICAL NAVIGATION
PLANNING INFORMATION
Expect 11000'

NOTE: Chart not to scale.

ST. PETERSBURG TRANSITION (PIE.ZEILR4): From over PIE VORTAC via SRQ R-353 to SRQ VOR/DME. Thence. . . .

TEPEE TRANSITION (TEPEE.ZEILR4): From over TEPEE INT via SRQ R-021 to SRQ VOR/DME. Thence. . . .

. . . .From over SRQ VOR/DME via SRQ R-173 to ZEILR INT, then heading 150°. Expect radar vectors to final approach course.

ZEILR FOUR ARRIVAL

(ZEILR.ZEILR4) 15SEP16

NAPLES, FLORIDA

SE-3, 09 NOV 2017 to 07 DEC 2017

SE-3, 09 NOV 2017 to 07 DEC 2017