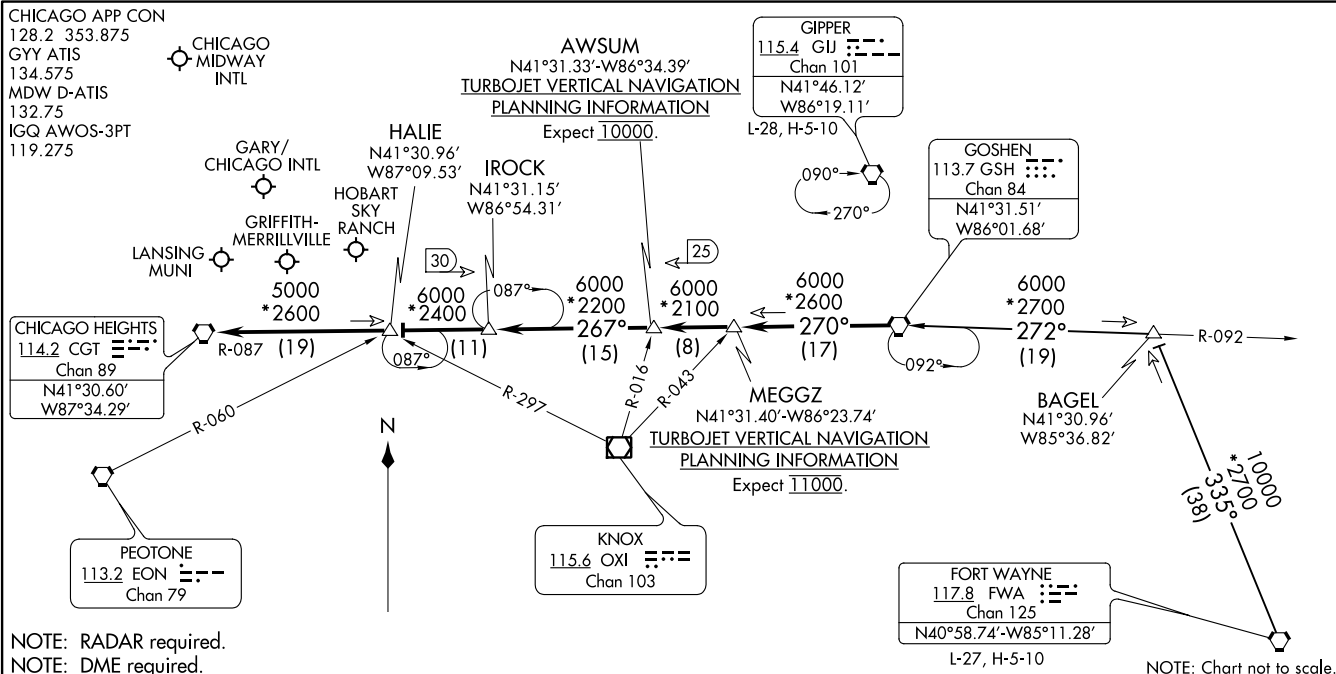


GOSHEN EIGHT ARRIVAL
(GSH.GSH8) 24MAR22

GOSHEN EIGHT ARRIVAL
(GSH.GSH8) 22083



NOTE: RADAR required.
NOTE: DME required.

NOTE: Chart not to scale.

ARRIVAL ROUTE DESCRIPTION

FORT WAYNE TRANSITION (FWA.GSH8): From over FWA VORTAC on FWA R-335 to BAGEL then on GSH R-092 to GSH VORTAC. Thence....
BAGEL TRANSITION (BAGEL.GSH8): From over BAGEL GSH R-092 to GSH VORTAC. Thence....

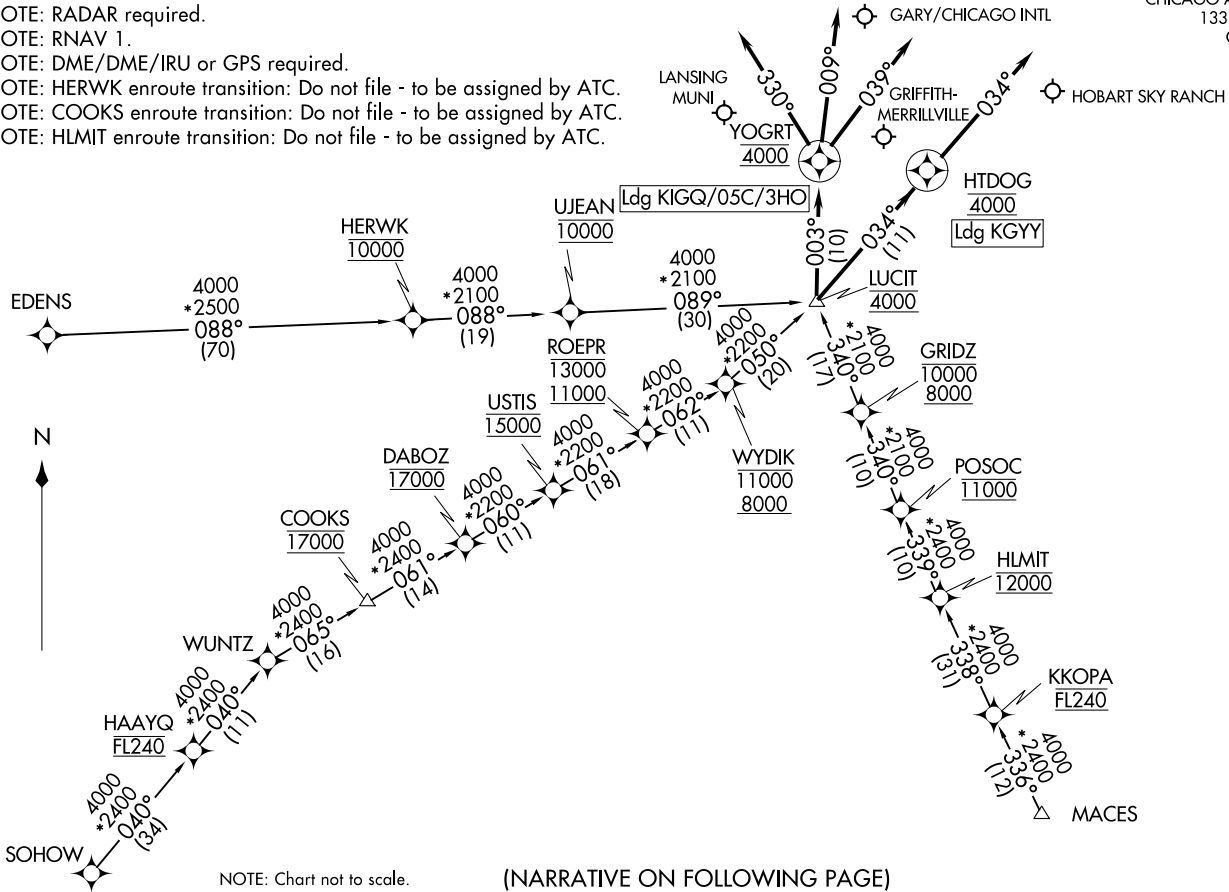
....From over GSH VORTAC on GSH R-270 to MEGGZ, then on GSH R-270 to AWSUM, then on GSH R-270 and CGT R-087 to IROCK, then on CGT R-087 to HALIE, then on CGT R-087 to CHICAGO VORTAC.
Expect RADAR vectors to final approach course.

CHICAGO, ILLINOIS

CHICAGO, ILLINOIS

CHICAGO APP CON
133.1 285.6
GY ATIS
134.575

NOTE: RADAR required.
NOTE: RNAV 1.
NOTE: DME/DME/IRU or GPS required.
NOTE: HERWK enroute transition: Do not file - to be assigned by ATC.
NOTE: COOKS enroute transition: Do not file - to be assigned by ATC.
NOTE: HLMIT enroute transition: Do not file - to be assigned by ATC.



NOTE: Chart not to scale.

(NARRATIVE ON FOLLOWING PAGE)

LUCIT TWO ARRIVAL (RNAV)
(LUCIT.LUCIT2) 17JUN21

GARY, INDIANA

(LUCIT.LUCIT2) 21336
LUCIT TWO ARRIVAL (RNAV)

AL-748 (FAA)

GARY, INDIANA

ARRIVAL ROUTE DESCRIPTION

COOKS TRANSITION (COOKS.LUCIT2):

EDENS TRANSITION (EDENS.LUCIT2):

HERWK TRANSITION (HERWK.LUCIT2):

HLMIT TRANSITION (HLMIT.LUCIT2):

MACES TRANSITION (MACES.LUCIT2):

SOHOW TRANSITION (SOHOW.LUCIT2):

LANDING 05C: From LUCIT on track 003° to cross YOGRT at 4000, then on track 009°. Expect RADAR vectors to final approach course.

LANDING 3HO: From LUCIT on track 003° to cross YOGRT at 4000, then on track 039°. Expect RADAR vectors to final approach course.

LANDING GYY: From LUCIT on track 034° to cross HTDOG at 4000, then on track 034°. Expect RADAR vectors to final approach course.

LANDING IGQ: From LUCIT on track 003° to cross YOGRT at 4000, then on track 330°. Expect RADAR vectors to final approach course.

EC-2, 19 MAY 2022 to 16 JUN 2022

EC-2, 19 MAY 2022 to 16 JUN 2022