

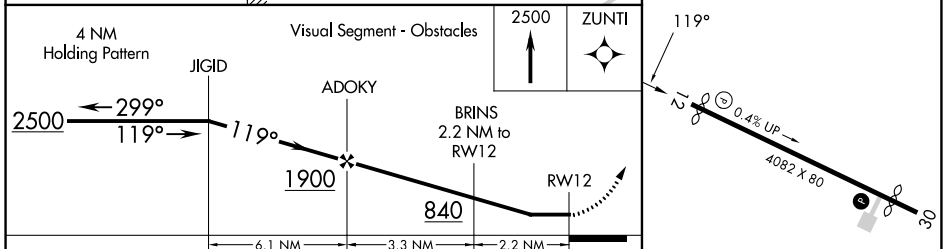
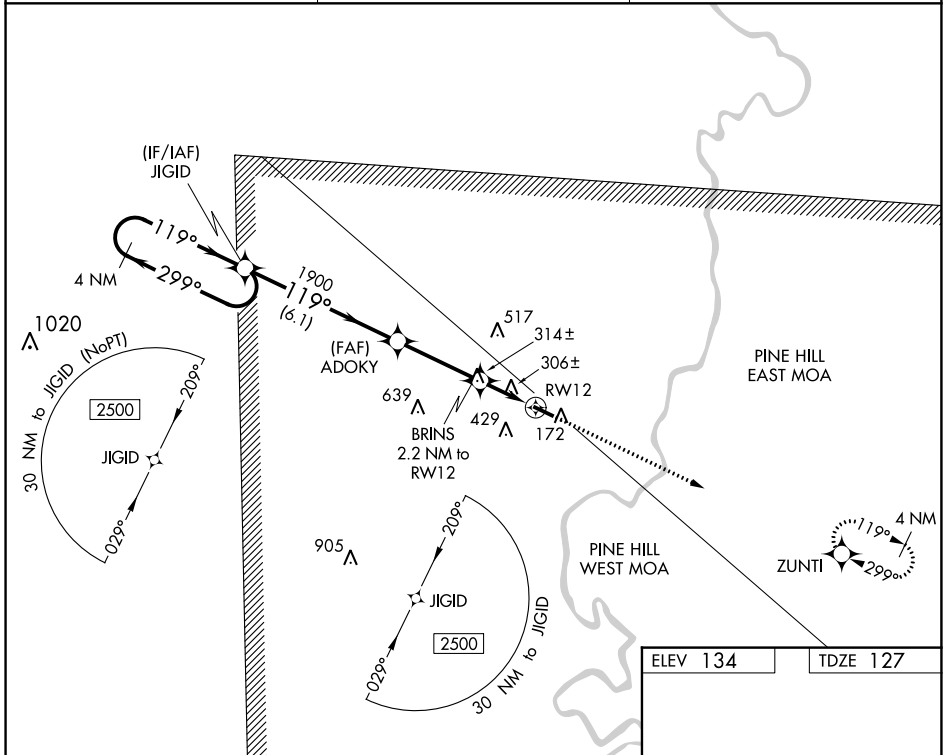
WAAS CH <b>70638</b> W12A	APP CRS <b>119°</b>	Rwy Idg <b>3913</b> TDZE <b>127</b> Apt Elev <b>134</b>
---------------------------------	------------------------	---

# RNAV (GPS) RWY 12

BUTLER/CHOCTAW COUNTY (Ø9A)

<p><b>⚠ NA</b> DME/DME RNP-0.3 NA. Helicopter visibility reduction below 1 SM NA. Use Demopolis altimeter setting; when not received, use Key Fld altimeter setting and increase all MDA 60 feet and increase all Cat C visibility ¼ mile. Procedure NA at night.</p>	<p><b>MISSED APPROACH:</b> Climb to 2500 direct ZUNTI and hold.</p>
---	---

DYA AWOS-3P <b>119.475</b>	MERIDIAN APP CON ★ <b>121.275 348.7</b>	UNICOM <b>122.8 (CTAF) 0</b>
-------------------------------	--	---------------------------------



CATEGORY	A	B	C	D
LP MDA	620-1	493 (500-1)	620-1 <sup>3</sup> / <sub>8</sub> 493 (500-1 <sup>3</sup> / <sub>8</sub> )	NA
LNAV MDA	640-1	513 (600-1)	640-1 <sup>3</sup> / <sub>8</sub> 513 (600-1 <sup>3</sup> / <sub>8</sub> )	NA
<b>C</b> CIRCLING	680-1 546 (600-1)	800-1 666 (700-1)	800-1 <sup>3</sup> / <sub>4</sub> 666 (700-1 <sup>3</sup> / <sub>4</sub> )	NA

ELEV 134	TDZE 127
----------	----------

MIRL Rwy 12-30 0

SE-4, 22 FEB 2024 to 21 MAR 2024

SE-4, 22 FEB 2024 to 21 MAR 2024

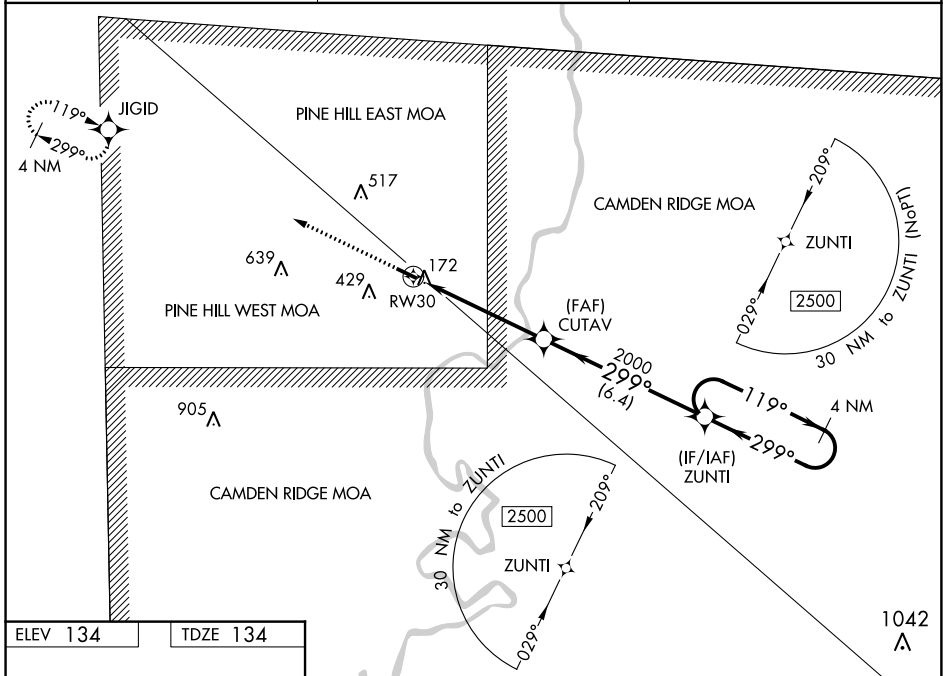
WAAS CH <b>82138</b> <b>W30A</b>	APP CRS <b>299°</b>	Rwy Idg 3638 TDZE 134 Apt Elev 134
--	------------------------	---

**RNAV (GPS) RWY 30**  
BUTLER/CHOCTAW COUNTY (Ø9A)

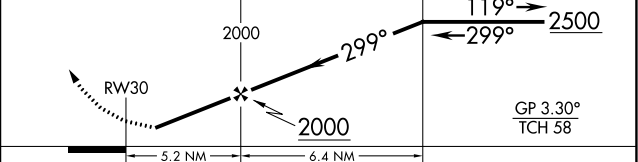
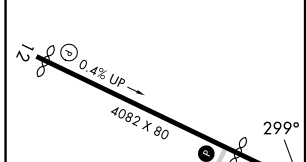
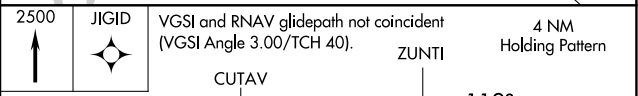
**▼** Baro-VNAV NA. DME/DME RNP-0.3 NA. Helicopter visibility reduction below ¾ SM NA.  
**▲ NA** Procedure NA at night. Use Demopolis altimeter setting; when not received, use Key Fld altimeter setting and increase LPV DA to 497, LNAV/VNAV DA to 487; and increase all MDA 60 feet; increase LPV visibility all Cats ¼ mile and increase Circling Cat C visibility ¼ mile.

**MISSED APPROACH:**  
Climb to 2500 direct JIGID and hold.

DYA AWOS-3P <b>119.475</b>	MERIDIAN APP CON * <b>121.275 348.7</b>	UNICOM <b>122.8 (CTAF) Ø</b>
-------------------------------	--	---------------------------------



ELEV 134	TDZE 134
----------	----------



CATEGORY	A	B	C	D
LPV DA		450-1 316 (400-1)		NA
LNAV/VNAV DA		440-1 306 (400-1)		NA
LNAV MDA	580-1	446 (500-1)	580-1 3/8 446 (500-1 3/8)	NA
<b>C</b> CIRCLING	680-1 546 (600-1)	800-1 666 (700-1)	800-1 3/4 666 (700-1 3/4)	NA

SE-4, 22 FEB 2024 to 21 MAR 2024

SE-4, 22 FEB 2024 to 21 MAR 2024