

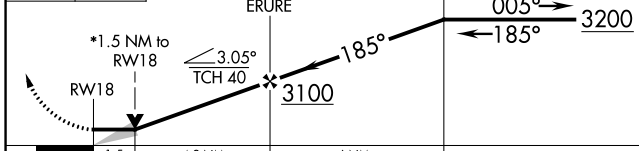
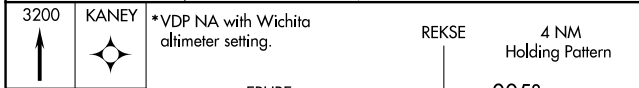
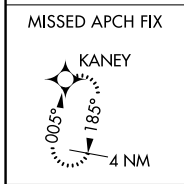
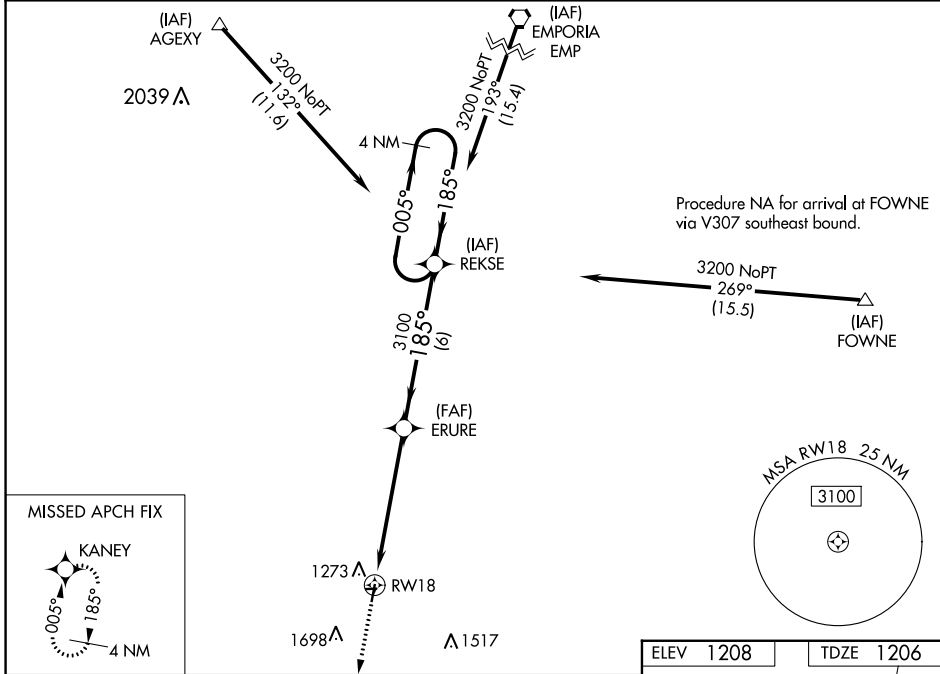
APP CRS	Rwy Idg	3504
185°	TDZE	1206
	Apt Elev	1208

RNAV (GPS) RWY 18

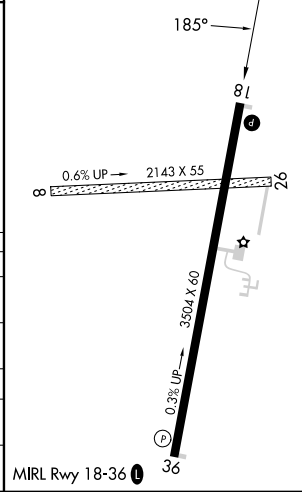
LT WILLIAM M MILLIKEN (13K)

RNP APCH:	Obtain local altimeter on CTAF; when not received, use Wichita altimeter setting. Circling NA to Rwy 8 and 26.	MISSED APPROACH: Climb to 3200 direct KANEY and hold.
-----------	--	---

AWOS-3PT 120.975	KANSAS CITY CENTER 120.2 323.2	UNICOM 122.8 (CTAF)
----------------------------	--	-------------------------------



ELEV 1208	TDZE 1206
-----------	-----------



CATEGORY	A	B	C	D
RNAV MDA	1720-1 514 (600-1)		1720-1½ 514 (600-1½)	NA
CIRCLING	1720-1 512 (600-1)		2060-2½ 852 (900-2½)	NA
WICHITA DWIGHT D EISENHOWER NTL ALTIMETER SETTING MINIMUMS				
RNAV MDA	1860-1 654 (700-1)		1860-1¾ 654 (700-1¾)	NA
CIRCLING	1860-1 652 (700-1)		2220-3 1012 (1100-3)	NA

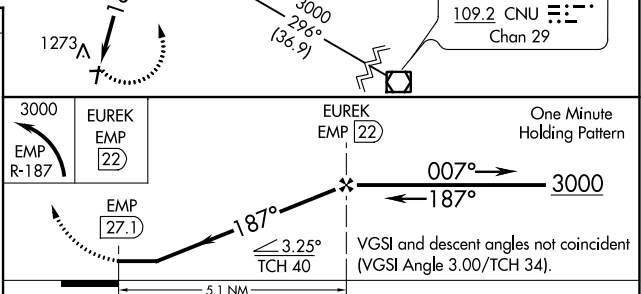
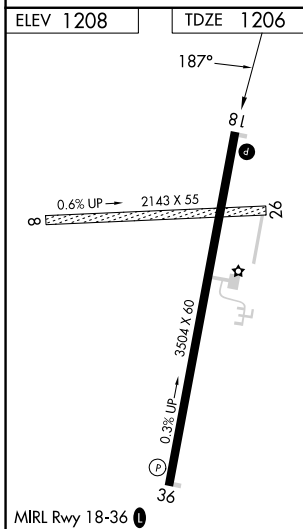
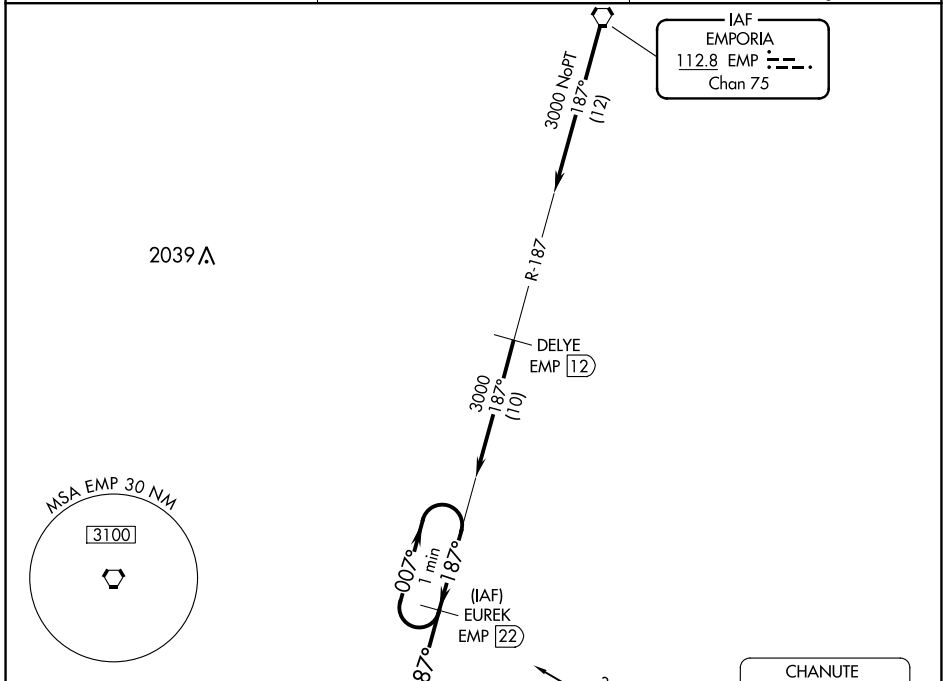
VORTAC EMP 112.8 Chan 75	APP CRS 187°	Rwy ldg 3504 TDZE 1206 Apt Elev 1208
--	------------------------	--

VOR/DME RWY 18

LT WILLIAM M MILLIKEN (13K)

NA Obtain local altimeter on CTAF; when not received, use Wichita altimeter setting. Circling NA to Rwy 8 and 26. MISSED APPROACH: Climbing left turn to 3000 via EMP R-187 to EUREK/22 DME and hold.

AWOS-3PT 120.975	KANSAS CITY CENTER 120.2 323.2	UNICOM 122.8 (CTAF)
----------------------------	--	-------------------------------



CATEGORY	A	B	C	D
S-18	1820-1 614 (700-1)	1820-1¼ 614 (700-1¼)	1820-1¾ 614 (700-1¾)	NA
CIRCLING	1820-1 612 (700-1)	1820-1¼ 612 (700-1¼)	2060-2½ 852 (900-2½)	NA
WICHITA DWIGHT D EISENHOWER NTL ALTIMETER SETTING MINIMUMS				
S-18	1980-1 774 (800-1)	1980-1¼ 774 (800-1¼)	1980-2½ 774 (800-2½)	NA
CIRCLING	1980-1 772 (800-1)	1980-1¼ 772 (800-1¼)	2220-3 1012 (1100-3)	NA

NC-2, 22 FEB 2024 to 21 MAR 2024

NC-2, 22 FEB 2024 to 21 MAR 2024