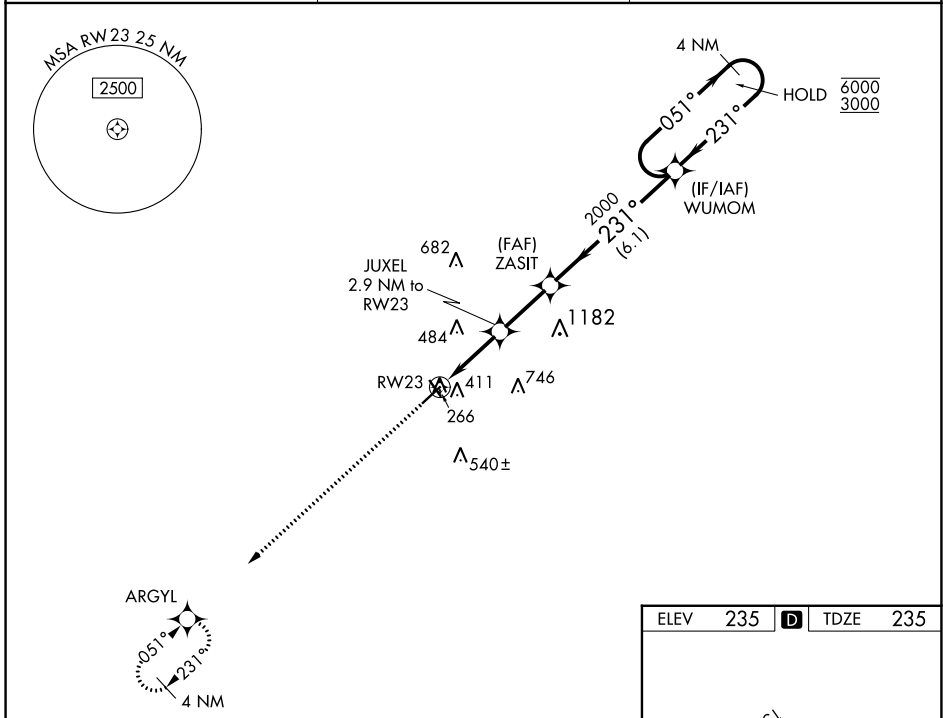


WAAS CH 81833 W23A	APP CRS 231°	Rwy Idg 5501 TDZE 235 Apt Elev 235
--	------------------------	---

RNAV (GPS) RWY 23

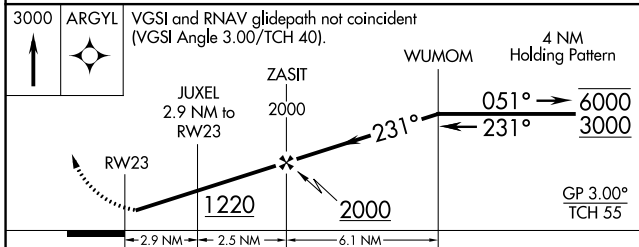
COOK COUNTY (15J)

RNP APCH - GPS.		MISSED APPROACH: Climb to 3000 direct ARGYL and hold, continue climb-in-hold to 3000.
<p>Procedure NA at night. Rwy 23 helicopter visibility reduction below 1 SM NA. Baro-VNAV NA. Use Moultrie Muni altimeter setting.</p>		
MGR AWOS-3PT 118.925	VALDOSTA APP CON★ 126.6 285.6	UNICOM 122.8 (CTAF) ①

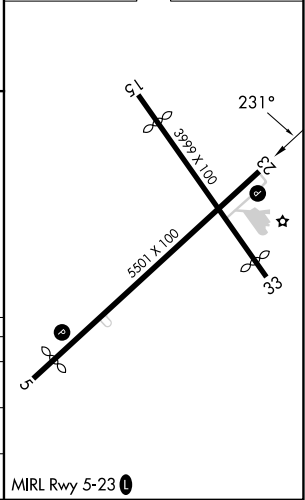


SE-4, 22 FEB 2024 to 21 MAR 2024

SE-4, 22 FEB 2024 to 21 MAR 2024



ELEV	235	①	TDZE	235
------	-----	---	------	-----



CATEGORY	A	B	C	D
LPV DA	595-1		360 (400-1)	
LNAV/VNAV DA	694-1 ³ / ₈		459 (500-1 ³ / ₈)	
LNAV MDA	700-1	465 (500-1)	700-1 ³ / ₈	465 (500-1 ³ / ₈)