

MAGEE, MISSISSIPPI

AL-9829 (FAA)

21084

WAAS CH 62835 W18A	APP CRS 180°	Rwy Idg 3103 TDZE 555 Apt Elev 555
--	------------------------	---

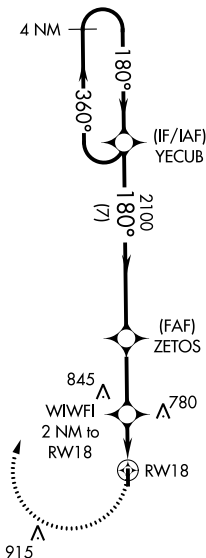
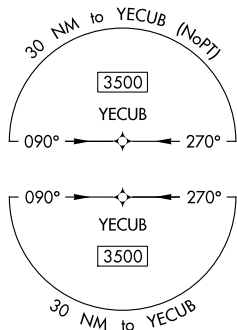
RNAV (GPS) RWY 18

MAGEE MUNI (17M)

▽ Use Brookhaven altimeter setting; when not received, use Jackson-Medgar Wiley Evers Intl altimeter setting. DME/DME RNP-0.3 NA. Procedure NA at night.
▲ NA Rwy 18, 36 helicopter visibility reduction below 1 SM NA.

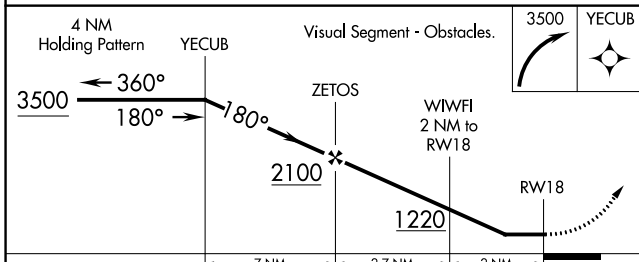
MISSED APPROACH: Climbing right turn to 3500 direct YECUB and hold.

1R7 AWOS-3P 118.125	JAN ASOS 121.05	MEMPHIS CENTER 125.975 307.275	UNICOM 122.8 (CTAF) 0
-------------------------------	---------------------------	--	---------------------------------



1677 **▲**

ELEV 555	TDZE 555



CATEGORY	A	B	C	D
LP MDA	1060-1	505 (600-1)	1060-1 ³ / ₈ 505 (600-1 ³ / ₈)	NA
LNAV MDA	1080-1	525 (600-1)	1080-1 ¹ / ₂ 525 (600-1 ¹ / ₂)	NA
C CIRCLING	1080-1 525 (600-1)	1160-1 605 (700-1)	1260-2 705 (800-2)	NA

MIRL Rwy 18-36 **0**

MAGEE, MISSISSIPPI
Orig-A 25MAY17

31°52'N-89°48'W

MAGEE MUNI (17M) RNAV (GPS) RWY 18

SC-4, 22 FEB 2024 to 21 MAR 2024

SC-4, 22 FEB 2024 to 21 MAR 2024

MAGEE, MISSISSIPPI

AL-9829 (FAA)

21056

WAAS CH 69235 W36A	APP CRS 360°	Rwy ldg TDZE 555 Apt Elev 555
--	------------------------	---

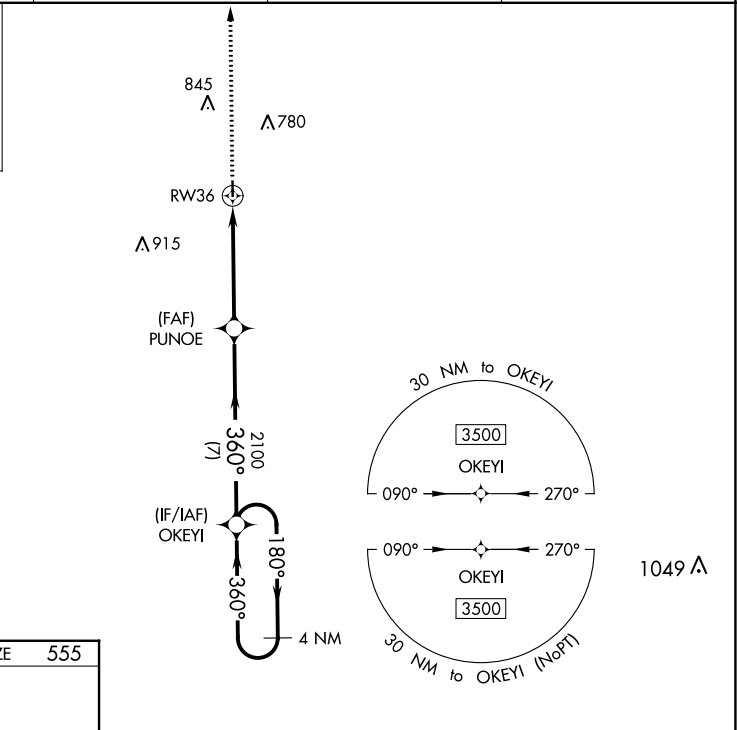
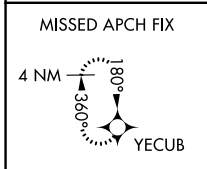
RNAV (GPS) RWY 36

MAGEE MUNI (17M)

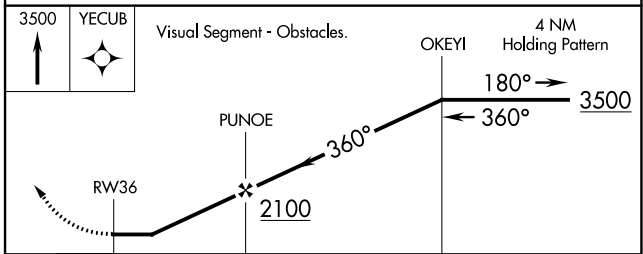
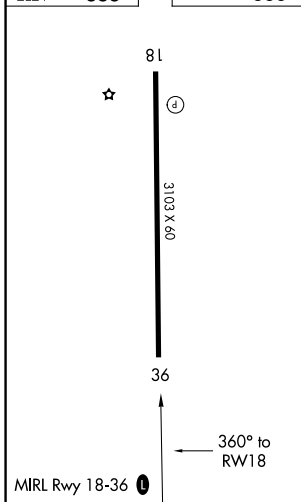
▽ Use Brookhaven altimeter setting; when not received, use Jackson-Medgar Wiley Evers Intl altimeter setting. DME/DME RNP-0.3 NA. Procedure NA at night.
▲ NA

MISSED APPROACH: Climb to 3500 direct YECUB and hold.

1R7 AWOS-3P 118.125	JAN ASOS 121.05	MEMPHIS CENTER 125.975 307.275	UNICOM 122.8 (CTAF) 0
-------------------------------	---------------------------	--	---------------------------------



ELEV 555	TDZE 555
----------	----------



CATEGORY	A	B	C	D
LP MDA	1100-1	545 (600-1)	1100-1 $\frac{5}{8}$ 545 (600-1 $\frac{5}{8}$)	NA
LNAV MDA	1120-1	565 (600-1)	1120-1 $\frac{5}{8}$ 565 (600-1 $\frac{5}{8}$)	NA
C CIRCLING	1120-1 565 (600-1)	1160-1 605 (700-1)	1260-2 705 (800-2)	NA

MAGEE, MISSISSIPPI
Orig-A 25MAY17

31°52'N-89°48'W

MAGEE MUNI (17M)

RNAV (GPS) RWY 36

SC-4, 22 FEB 2024 to 21 MAR 2024

SC-4, 22 FEB 2024 to 21 MAR 2024