

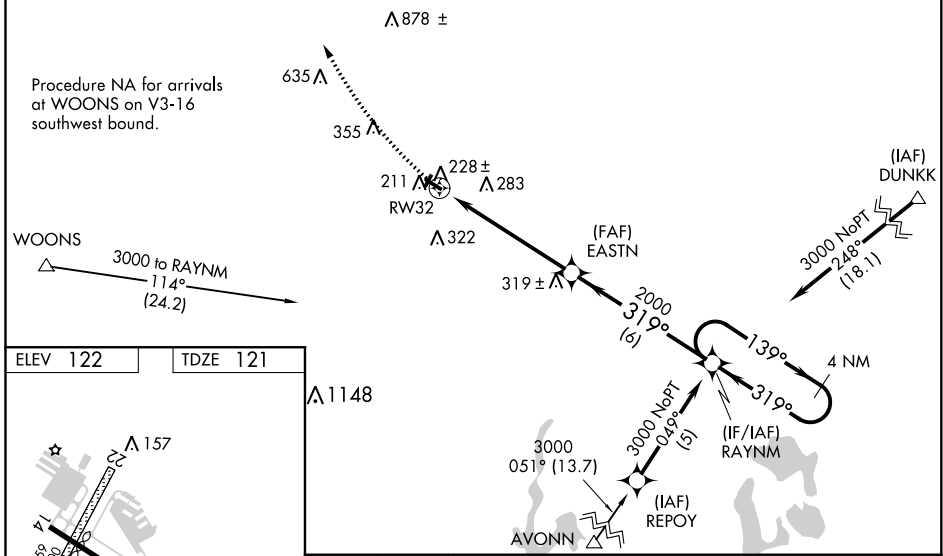
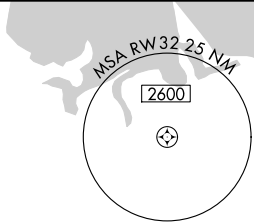
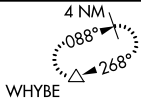
APP CRS 319°	Rwy Idg 3263
	TDZE 121
	Apt Elev 122

RNAV (GPS) RWY 32

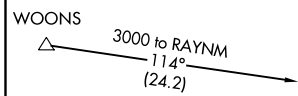
MANSFIELD MUNI (1B9)

NA Use Taunton altimeter setting. DME/DME RNP-0.3 NA. Helicopter visibility reduction below 1 SM NA. Procedure NA at night. MISSED APPROACH: Climbing right turn to 3000 direct WHYBE and hold.

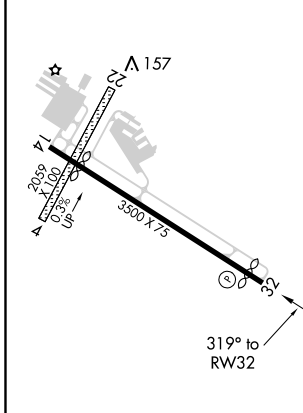
TAUNTON MUNI - KING FIELD ASOS 132.675	BOSTON APP CON 124.1 382.0	UNICOM 123.0 (CTAF)
--------------------------------------------------	--------------------------------------	-------------------------------



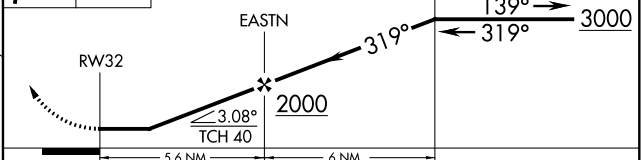
Procedure NA for arrivals at WOONS on V3-16 southwest bound.



ELEV 122	TDZE 121
----------	----------



3000 WHYBE VGSI and descent angles not coincident (VGSI Angle 4.00/TCH 38). 4 NM Holding Pattern



CATEGORY	A	B	C	D
LNAV MDA	600-1	479 (500-1)	NA	
C CIRCLING	640-1	518 (600-1)	NA	

NE-1, 17 JUN 2021 to 15 JUL 2021

NE-1, 17 JUN 2021 to 15 JUL 2021