

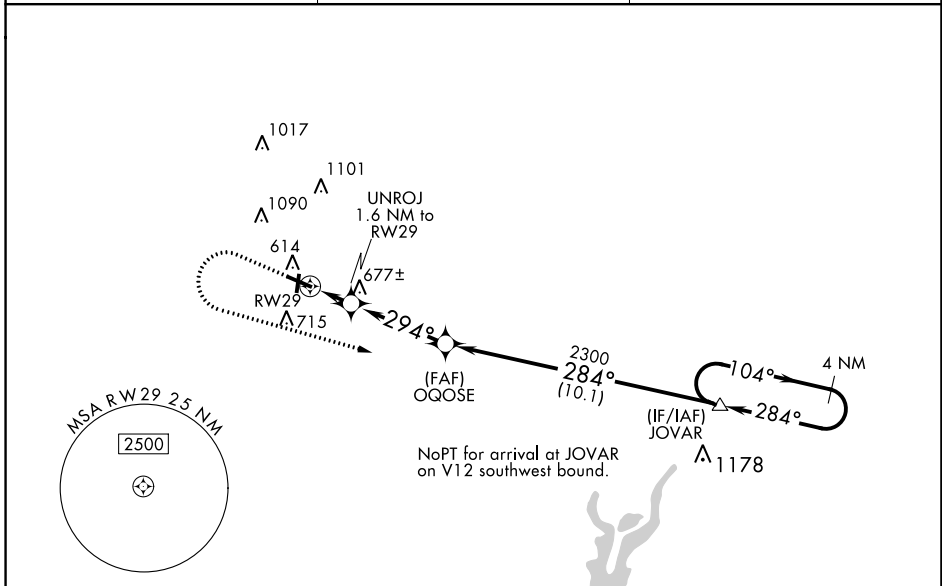
WAAS CH 93933 W29A	APP CRS 294°	Rwy Idg 5103 TDZE 579 Apt Elev 585
--	------------------------	---

RNAV (GPS) RWY 29

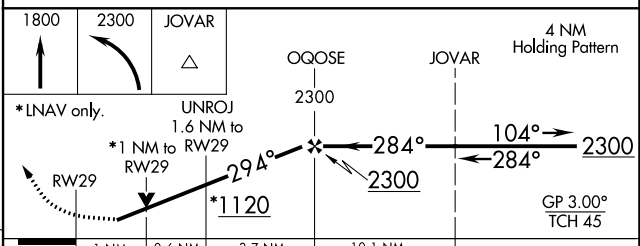
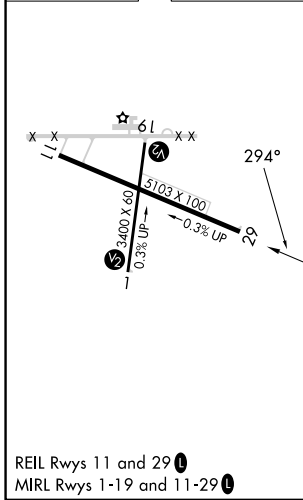
EFFINGHAM COUNTY MEML (1H2)

RNP APCH. ▼ Rwy 29 helicopter visibility reduction below 3/4 SM NA. Straight-in Rwy 1 NA at night, Circling Rwy 1, 19 NA at night. For uncompensated Baro-VNAV systems, LNAV/VNAV below -16°C or above 54°C. Baro-VNAV and VDP NA when using Olney-Noble altimeter setting. When local altimeter setting not received, use Olney-Noble altimeter setting and increase all DA 77 feet and all MDA 80 feet; increase LPV all Cats and Circling Cat C/D visibility 1/4 SM, increase LNAV/VNAV all Cats visibility 3/8 SM.	MISSED APPROACH: Climb to 1800 then climbing left turn to 2300 direct JOVAR and hold.
---	--

AWOS-3PT 118.375	KANSAS CITY CENTER 124.3 269.15	UNICOM 122.725 (CTAF) 0
----------------------------	---	-----------------------------------



ELEV 585	TDZE 579
-----------------	-----------------



CATEGORY	A	B	C	D
LPV DA		838-7/8	259 (300-7/8)	
LNAV/VNAV DA		859-7/8	280 (300-7/8)	
LNAV MDA		940-1	361 (400-1)	
C CIRCLING	1020-1 435 (500-1)	1140-1 555 (600-1)	1440-2 1/2 855 (900-2 1/2)	1440-2 3/4 855 (900-2 3/4)

EC-3, 22 FEB 2024 to 21 MAR 2024

EC-3, 22 FEB 2024 to 21 MAR 2024