

WAAS CH <b>50432</b> <b>W10A</b>	APP CRS <b>101°</b>	Rwy Idg TDZE Apt Elev	<b>4500</b> <b>1370</b> <b>1370</b>
--	------------------------	-----------------------------	---

# RNAV (GPS) RWY 10

GROVE CITY (29D)

RNP APCH.

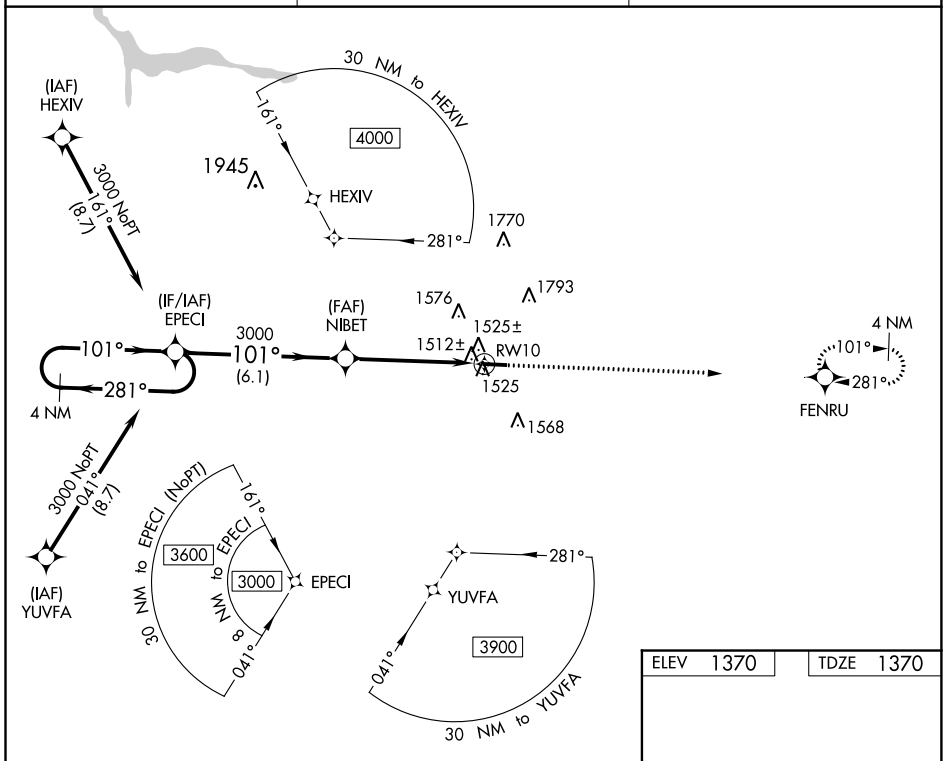
Use Franklin altimeter setting; when not received, use New Castle altimeter setting.

MISSED APPROACH: Climb to 4000 direct FENRU and hold

FKL AWOS 3-PT  
**118.175**

YOUNGSTOWN APP CON ★  
**133.95 322.3**

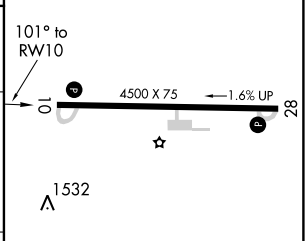
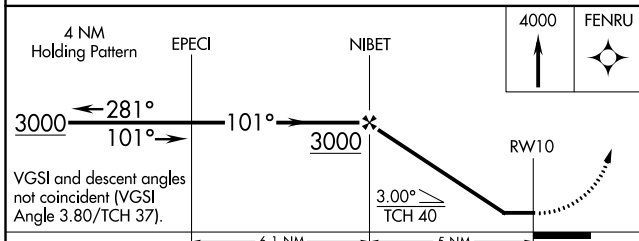
UNICOM  
**122.725 (CTAF) 0**



NE-4, 19 MAY 2022 to 16 JUN 2022

NE-4, 19 MAY 2022 to 16 JUN 2022

ELEV 1370	TDZE 1370
-----------	-----------



CATEGORY	A	B	C	D
LP MDA	1840-1	470 (500-1)		NA
LNAV MDA	1860-1	490 (500-1)		NA
CIRCLING	1920-1	550 (600-1)		NA

REIL Rwy 10 and 28  
MIRL Rwy 10-28 0

WAAS CH <b>53632</b> <b>W28A</b>	APP CRS <b>281°</b>	Rwy Idg TDZE Apt Elev	<b>4500</b> <b>1341</b> <b>1370</b>
--	------------------------	-----------------------------	---

# RNAV (GPS) RWY 28

GROVE CITY (29D)

RNP APCH - GPS

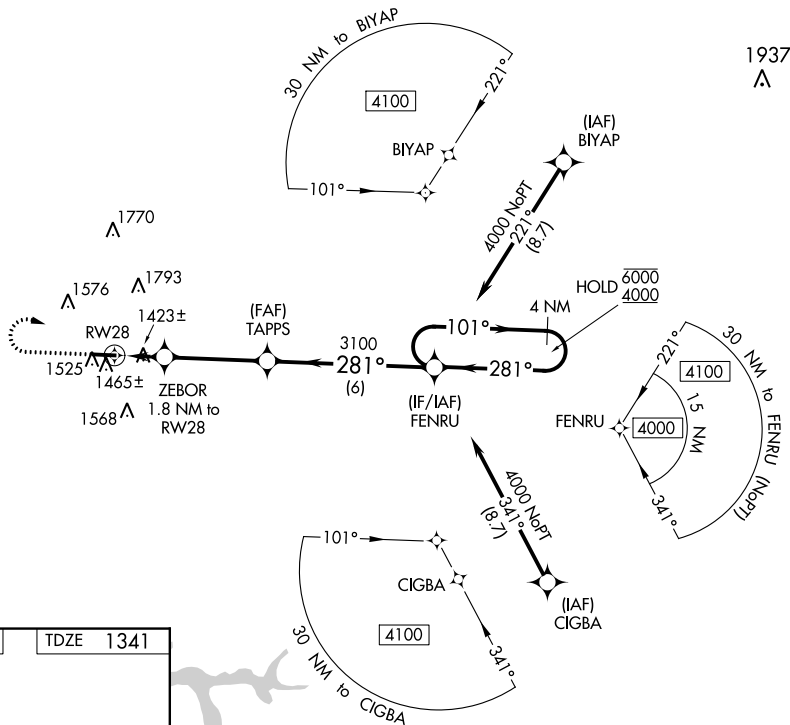
**▼** Rwy 28 helicopter visibility reduction below 3/4 SM NA.  
**▲ NA** Use Franklin altimeter setting; when not received, use New Castle altimeter setting.

MISSED APPROACH: Climb to 2300 then climbing right turn to 4000 direct FENRU and hold.

FKL AWOS 3-PT  
**118.175**

YOUNGSTOWN APP CON ★  
**133.95 322.3**

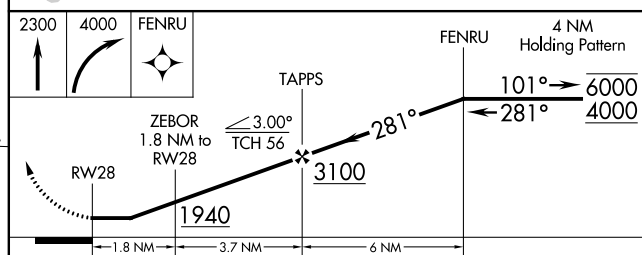
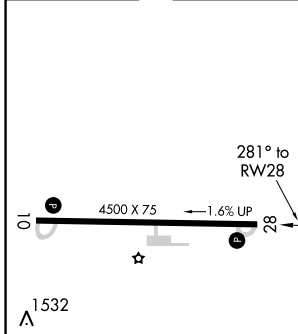
UNICOM  
**122.725 (CTAF) 0**



NE-4, 19 MAY 2022 to 16 JUN 2022

NE-4, 19 MAY 2022 to 16 JUN 2022

ELEV 1370	TDZE 1341
-----------	-----------



CATEGORY	A	B	C	D
LP MDA	1760-1	419 (400-1)		NA
LNNAV MDA	1800-1	459 (500-1)		NA
<b>C</b> CIRCLING	1920-1	550 (600-1)		NA