

WAAS CH 97416 W25A	APP CRS 252°	Rwy Idg TDZE Apt Elev	4000 643 643
--	------------------------	-----------------------------	---

RNAV (GPS) RWY 25

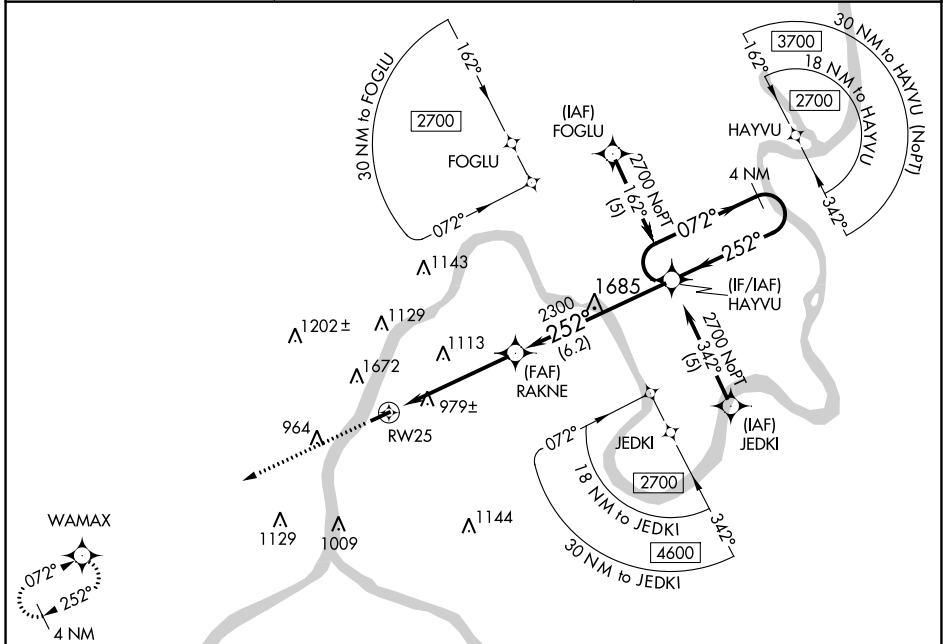
MASON COUNTY (3I2)

RNP APCH - GPS.

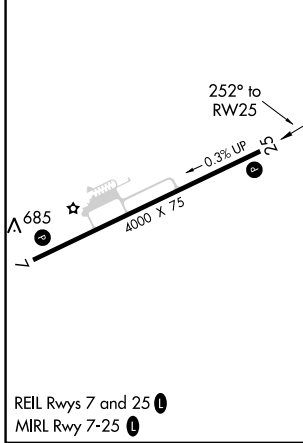
⚠ Circling NA NW of Rwy 7-25. Baro-VNAV NA when using Athens/Albany, OH altimeter setting. For uncompensated Baro-VNAV systems, LNAV/VNAV NA below -16°C or above 47°C. Rwy 25 helicopter visibility reduction below 3/4 SM NA. When local altimeter setting not received, use Athens/Albany, OH altimeter setting and increase all DA 61 feet and all MDA 80 feet; increase LPV all Cats visibility 1/4 mile and increase LNAV-VNAV all Cats visibility 1 mile. VDP NA when using Ohio University altimeter setting.

MISSED APPROACH:
Climb to 3200 direct WAMAX and hold.

AWOS-3 119.675	HUNTINGTON APP CON 128.4 270.1	UNICOM 122.8 (CTAF) 0
--------------------------	--	---------------------------------



ELEV 643	TDZE 643
----------	----------



3200	WAMAX	VGSI and RNAV glidepath angles not coincident (VGSI Angle 3.00/TCH 43).		4 NM Holding Pattern
		RAKNE	HAYVU	
		3.2 NM to RWY 25	6.2 NM	
		252°	072°	2700
		2300	252°	GP 3.00° TCH 54
CATEGORY	A	B	C	D
LPV DA		1430-2 ³ / ₄	787 (800-2 ³ / ₄)	
LNAV/VNAV DA		1727-4	1084 (1100-4)	
LNAV MDA	1700-1 ¹ / ₄ 1057 (1100-1 ¹ / ₄)	1700-1 ¹ / ₂ 1057 (1100-1 ¹ / ₂)	1700-3	1057 (1100-3)
CIRCLING	1700-1 ¹ / ₄ 1057 (1100-1 ¹ / ₄)	1700-1 ¹ / ₂ 1057 (1100-1 ¹ / ₂)	1700-3	1057 (1100-3)

NE-4, 22 FEB 2024 to 21 MAR 2024

NE-4, 22 FEB 2024 to 21 MAR 2024

RNAV (GPS) RWY 7

MASON COUNTY (3I2)

APP CRS	Rwy ldg	4000
072°	TDZE	643
	Apt Elev	643

RNP APCH - GPS.

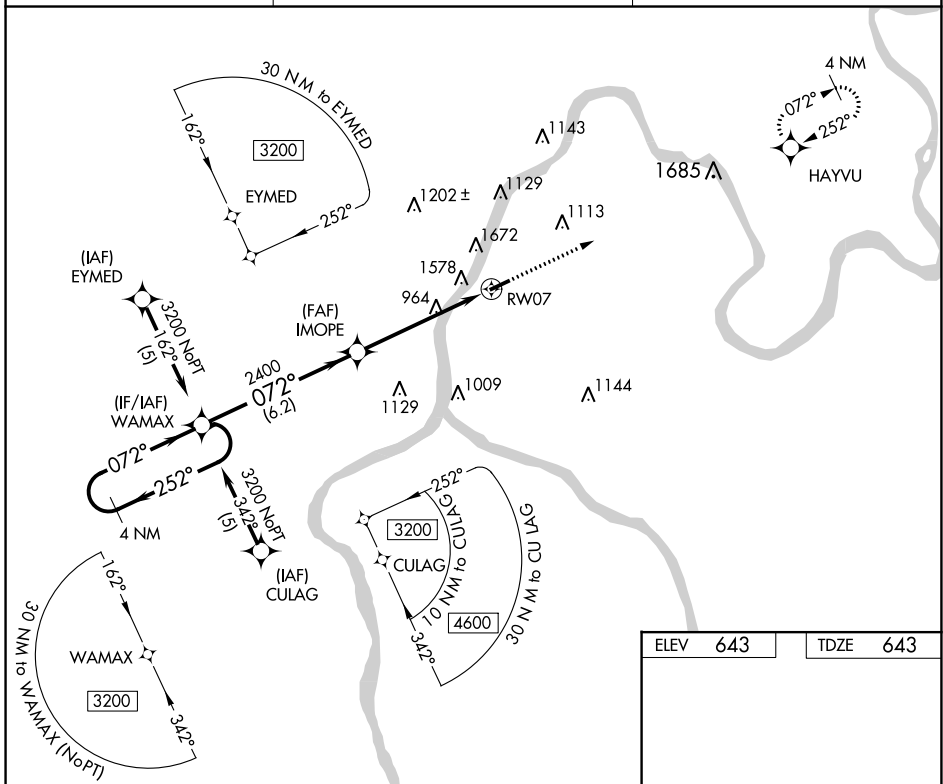
⚠ Circling NA NW of Rwy 7-25. Rwy 7 helicopter visibility reduction below 3/4 SM NA.
⚠ When local altimeter setting not received, use Athens/Albany, OH altimeter setting and increase all MDA 80 feet. Straight-in and Circling NA at night to Rwy 7.
⚠ -17°C

MISSED APPROACH:
 Climb to 2700 direct HAYVU and hold.

AWOS-3
119.675

HUNTINGTON APP CON
128.4 270.1

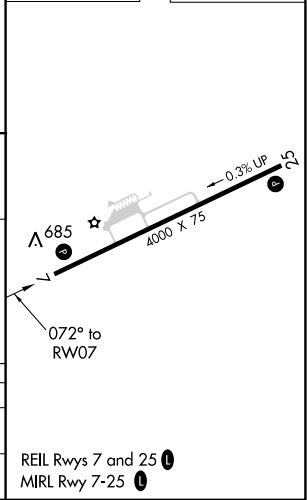
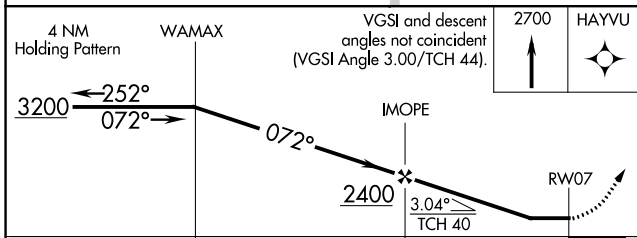
UNICOM
122.8 (CTAF) 0



NE-4, 22 FEB 2024 to 21 MAR 2024

NE-4, 22 FEB 2024 to 21 MAR 2024

ELEV	643	TDZE	643
------	------------	------	------------



CATEGORY	A	B	C	D
LNVA MDA	1880-1/4 1237 (1300-1/4)	1880-1/2 1237 (1300-1/2)	1880-3	1237 (1300-3)
CIRCLING	1880-1/4 1237 (1300-1/4)	1880-1/2 1237 (1300-1/2)	1880-3	1237 (1300-3)

REIL Rws 7 and 25 **0**
 MIRL Rwy 7-25 **0**