

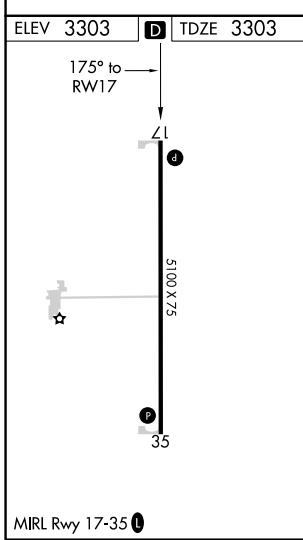
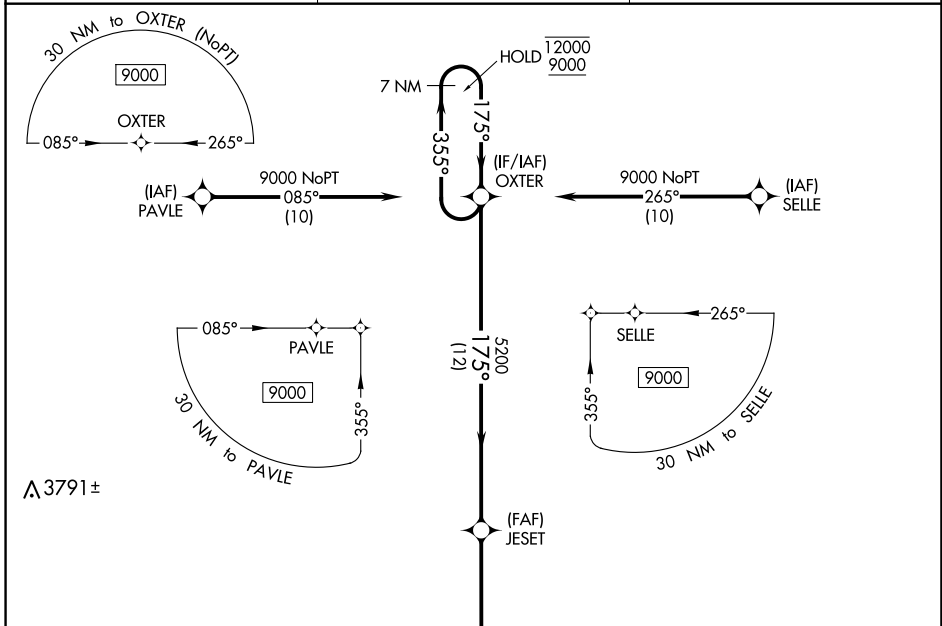
WAAS CH <b>63243</b> <b>W17A</b>	APP CRS <b>175°</b>	Rwy Idg TDZE Apt Elev	<b>5100</b> <b>3303</b> <b>3303</b>
--	------------------------	-----------------------------	---

# RNAV (GPS) RWY 17

MARK HOARD MEML (3K7)

RNP APCH-GPS. Baro-VNAV NA. Use Syracuse altimeter setting.	MISSED APPROACH: Climb to 9000 direct FITAB and hold, continue climb-in-hold to 9000.
---	---

3K3 AWOS-3 <b>119.975</b>	DENVER CENTER <b>132.7 226.675</b>	UNICOM <b>122.7 (CTAF)</b>
------------------------------	---------------------------------------	-------------------------------



ELEV 3303	D	TDZE 3303		
<p>7 NM Holding Pattern</p> <p>OXTER</p> <p>12000 ← 355°</p> <p>9000 → 175°</p> <p>GP 3.00° TCH 40</p>		<p>MISSED APCH FIX</p> <p>FITAB</p> <p>9000</p> <p>FITAB</p>		
<p>JESET</p> <p>5200</p> <p>5200</p> <p>12 NM</p> <p>5.8 NM</p> <p>RW17</p>				
CATEGORY	A	B	C	D
LPV DA	3583-1 280 (300-1)			NA
LNAV/VNAV DA	3960-1 657 (700-1)			NA
LNAV MDA	3960-1 657 (700-1)		3960-1 657 (700-1)	NA

NC-2, 22 FEB 2024 to 21 MAR 2024

NC-2, 22 FEB 2024 to 21 MAR 2024

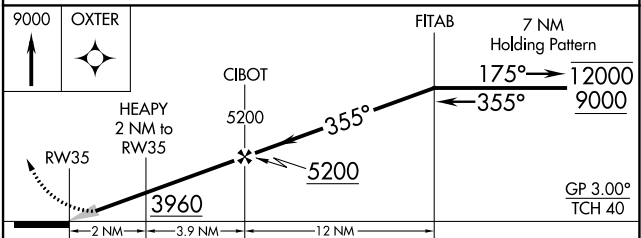
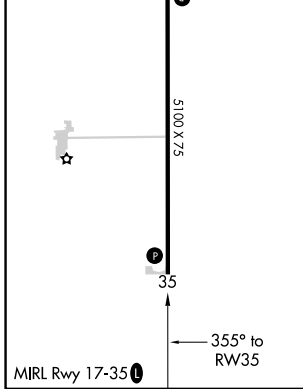
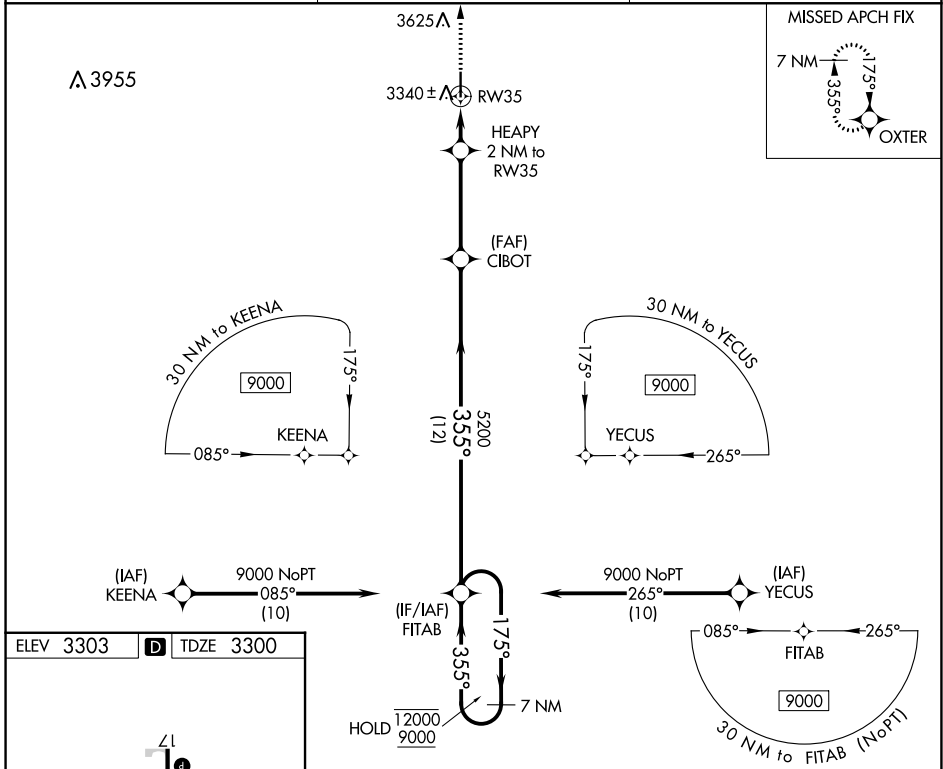
WAAS CH <b>73043</b> <b>W35A</b>	APP CRS <b>355°</b>	Rwy Idg TDZE Apt Elev	<b>5100</b> <b>3300</b> <b>3303</b>
--	------------------------	-----------------------------	---

# RNAV (GPS) RWY 35

MARK HOARD MEML (3K7)

RNP APCH-GPS.	MISSED APPROACH: Climb to 9000 direct OXTER and hold continue climb-in-hold to 9000.
<p>Baro-VNAV NA.</p> <p>Use Syracuse altimeter setting.</p>	

3K3 AWOS-3 <b>119.975</b>	DENVER CENTER <b>132.7 226.675</b>	UNICOM <b>122.7 (CTAF)</b>
------------------------------	---------------------------------------	-------------------------------



CATEGORY	A	B	C	D
LPV DA	3580-1	280 (300-1)		NA
LNAV/VNAV DA	3630-1	330 (400-1)		NA
LNAV MDA	3680-1	380 (400-1)		NA

NC-2, 22 FEB 2024 to 21 MAR 2024

NC-2, 22 FEB 2024 to 21 MAR 2024