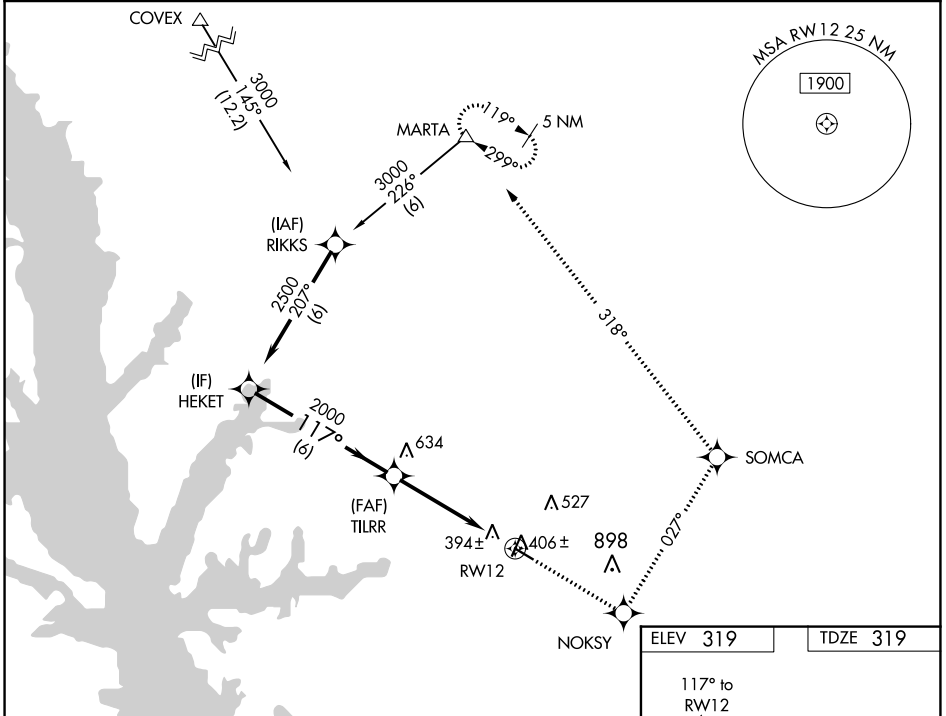


WAAS CH <b>78015</b> <b>W12A</b>	APP CRS <b>117°</b>	Rwy Idg <b>4402</b> TDZE <b>319</b> Apt Elev <b>319</b>
--	------------------------	---

# RNAV (GPS) RWY 12

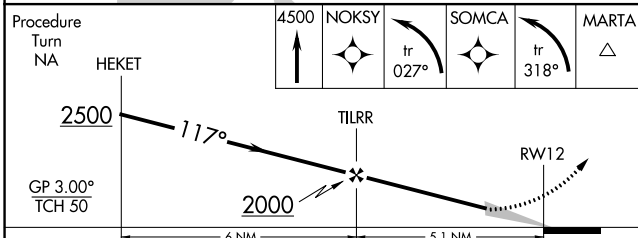
HART (3R4)

RNP APCH. Baro-VNAV NA. Use Fort Polk altimeter setting; when not received, use Natchitoches altimeter setting; increase LPV DA to 715 feet, LNAV/VNAV DA to 767 feet, and all MDA 20 feet, and increase LPV visibility all Cats ¼ SM.		MISSED APPROACH: Climb to 4500 direct NOKSY and left turn via track 027° to SOMCA and left turn via track 318° to MARTA and hold.
POLK APP CON <b>123.7 261.3</b>	GCO <b>135.075</b>	UNICOM <b>122.8 (CTAF)</b>



SC-4, 22 FEB 2024 to 21 MAR 2024

SC-4, 22 FEB 2024 to 21 MAR 2024



ELEV 319	TDZE 319
----------	----------

REIL Rwy 12 and 30  
MIRL Rwy 12-30

CATEGORY	A	B	C	D
LPV DA	713-1¼ 394 (400-1¼)			NA
LNAV/VNAV DA	765-1½ 446 (500-1½)			NA
LNAV MDA	820-1 501 (600-1)		820-1½ 501 (600-1½)	NA
CIRCLING	940-1 621 (700-1)		1280-3 961 (1000-3)	NA

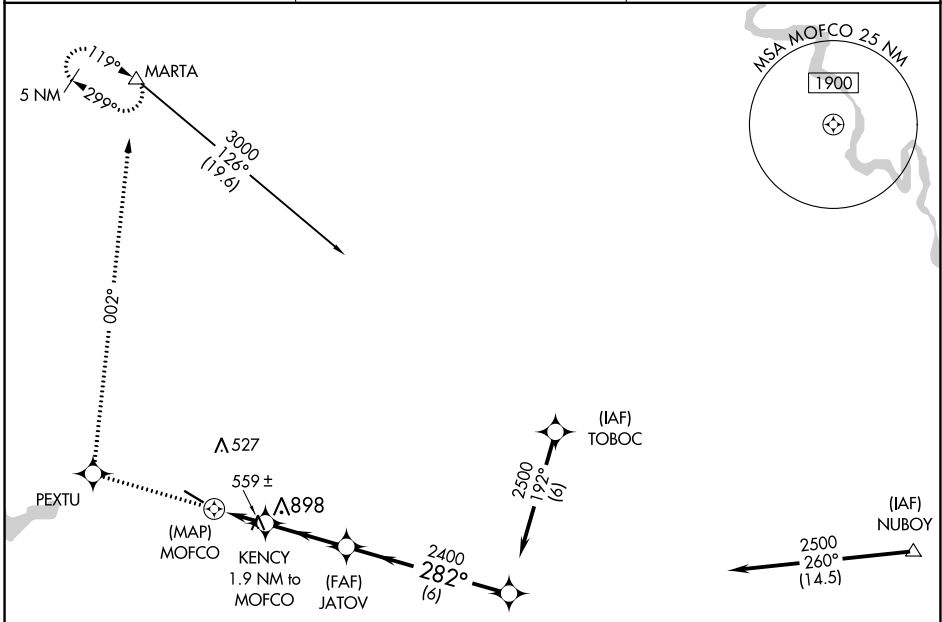
APP CRS	Rwy Idg <b>4402</b>
<b>282°</b>	TDZE <b>311</b>
	Apt Elev <b>319</b>

# RNAV (GPS) RWY 30

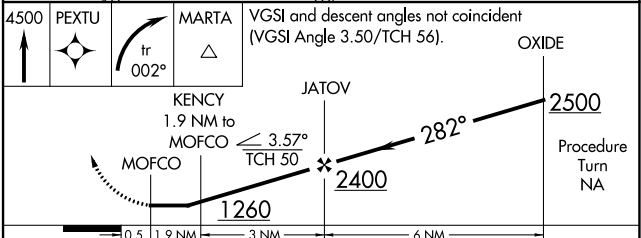
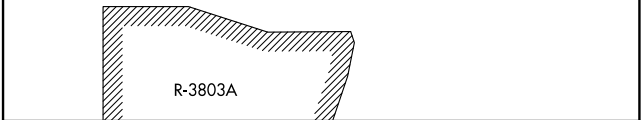
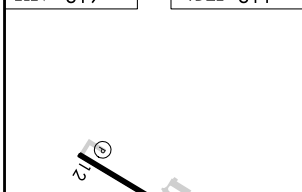
HART (3R4)

RNP APCH.	MISSED APPROACH: Climb to 4500 direct PEXTU and right turn via track 002° to MARTA and hold, continue climb in hold to 4500.
<p>▼ Rwy 30 helicopter visibility reduction below ¼ SM NA.</p> <p>▲ NA Use Fort Polk altimeter setting; when not received, use Natchitoches altimeter setting and increase all MDA 20 feet.</p>	

POLK APP CON <b>123.7 261.3</b>	GCO <b>135.075</b>	UNICOM <b>122.8 (CTAF)</b>
------------------------------------	-----------------------	-------------------------------



ELEV 319	TDZE 311
----------	----------



REIL Rws 12 and 30	MIRL Rwy 12-30			
CATEGORY	A	B	C	D
LNAV MDA	900-1	589 (600-1)	900-1¾ 589 (600-1¾)	NA

SC-4, 22 FEB 2024 to 21 MAR 2024

SC-4, 22 FEB 2024 to 21 MAR 2024