

APP CRS Rwy Idg **2827**
 141° TDZE **1116**
 Apt Elev **1116**

RNAV (GPS) RWY 14

WINTERSET MUNI (3Y3)

RNP APCH.

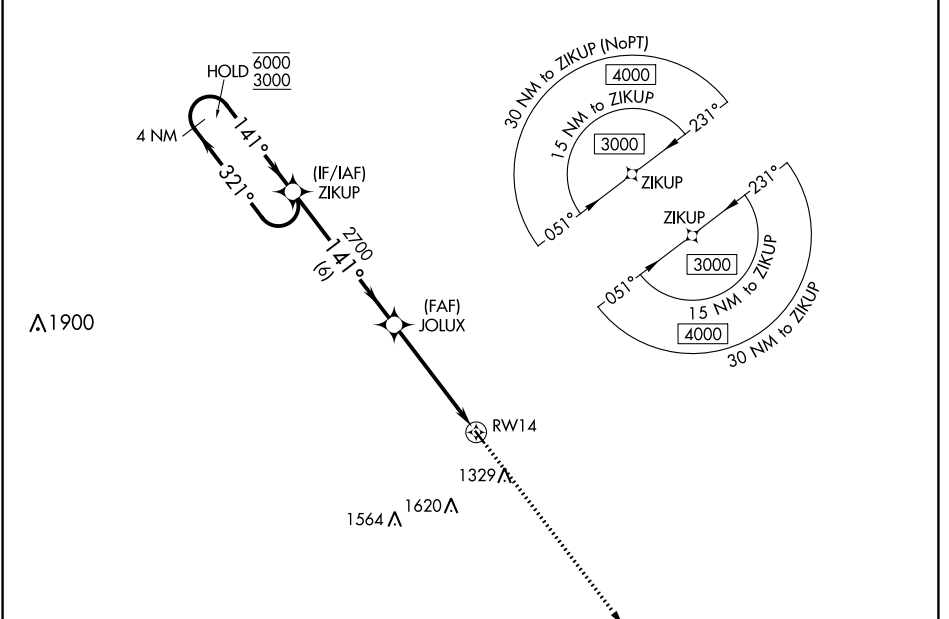
NA Circling NA for Cat B southwest of Rwy 14-32. Procedure NA at night.
NA Rwy 14 helicopter visibility reduction below 1 SM NA. Use Osceola altimeter setting.

MISSED APPROACH: Climb to 3000 direct JUNUG and hold.

I75 AWOS-3
120.975

DES MOINES APP CON
123.9 360.7

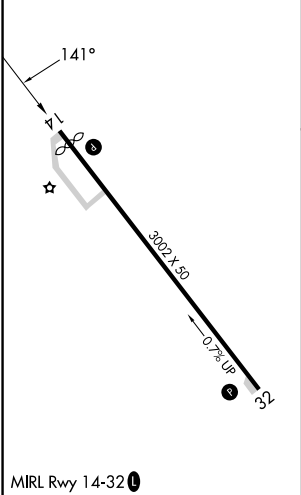
UNICOM
122.7 (CTAF) 0



NC-3, 22 FEB 2024 to 21 MAR 2024

NC-3, 22 FEB 2024 to 21 MAR 2024

ELEV 1116 TDZE 1116



VGSI and descent angles not coincident (VGSI Angle 3.00/TCH 32).

4 NM Holding Pattern

ZIKUP

JOLUX

RW14

3000 JUNUG

6000 ← 321°

3000 → 141°

2700

3.00° TCH 40

6 NM 4.9 NM

CATEGORY	A	B	C	D
LNAV MDA	1640-1	524 (600-1)	NA	
C CIRCLING	1640-1	1700-1	NA	
	524 (600-1)	584 (600-1)		

APP CRS	Rwy Idg	3002
321°	TDZE	1116
	Apt Elev	1116

RNAV (GPS) RWY 32

WINTERSET MUNI (3Y3)

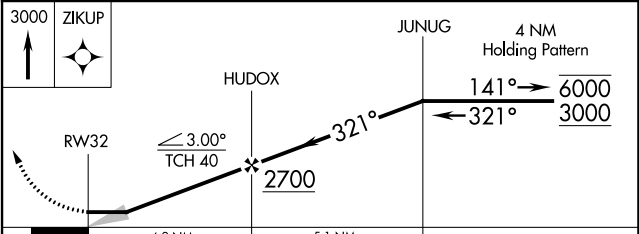
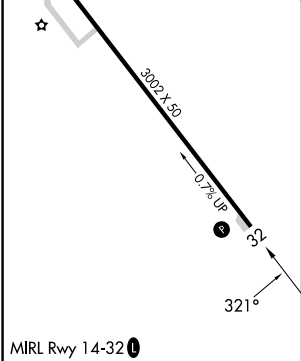
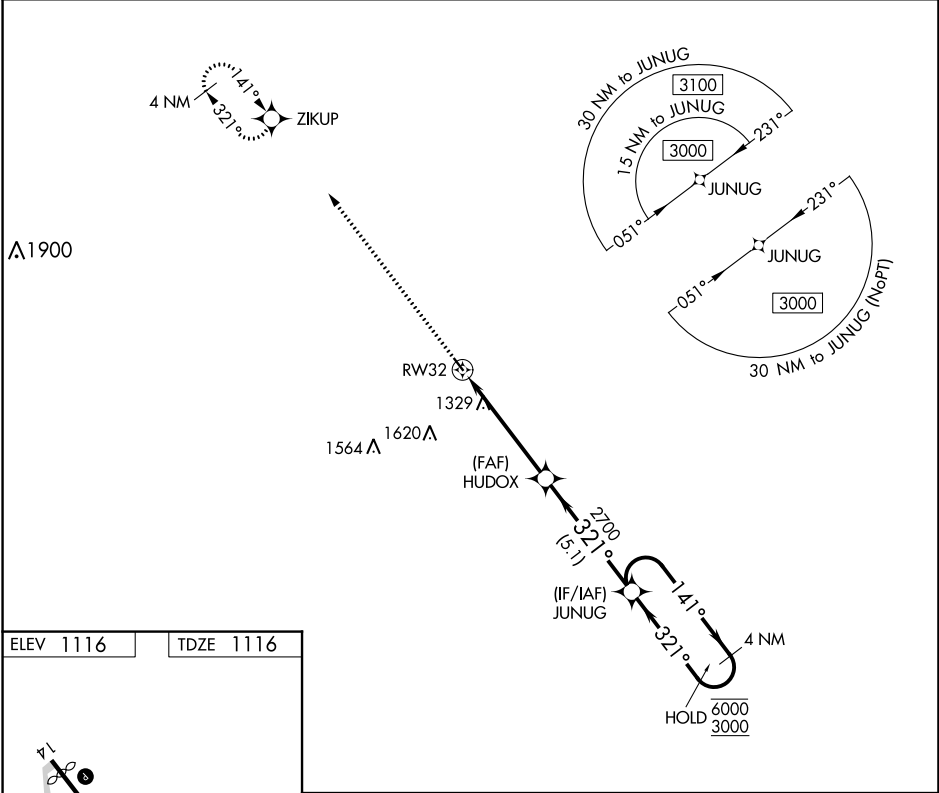
RNP APCH.
 ▼ Circling NA for Cat B southwest of Rwy 14-32. Circling
 ▲ NA Rwy 14 NA at night. Use Osceola altimeter setting.

MISSED APPROACH: Climb to 3000 direct ZIKUP and hold.

175 AWOS-3
120.975

DES MOINES APP CON
123.9 360.7

UNICOM
122.7 (CTAF) 0



CATEGORY	A	B	C	D
LNNAV MDA	1660-1	544 (600-1)	NA	
CIRCLING	1660-1 544 (600-1)	1700-1 584 (600-1)	NA	