

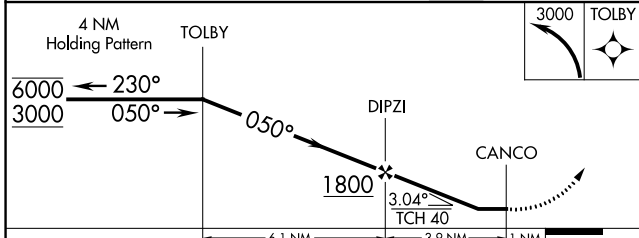
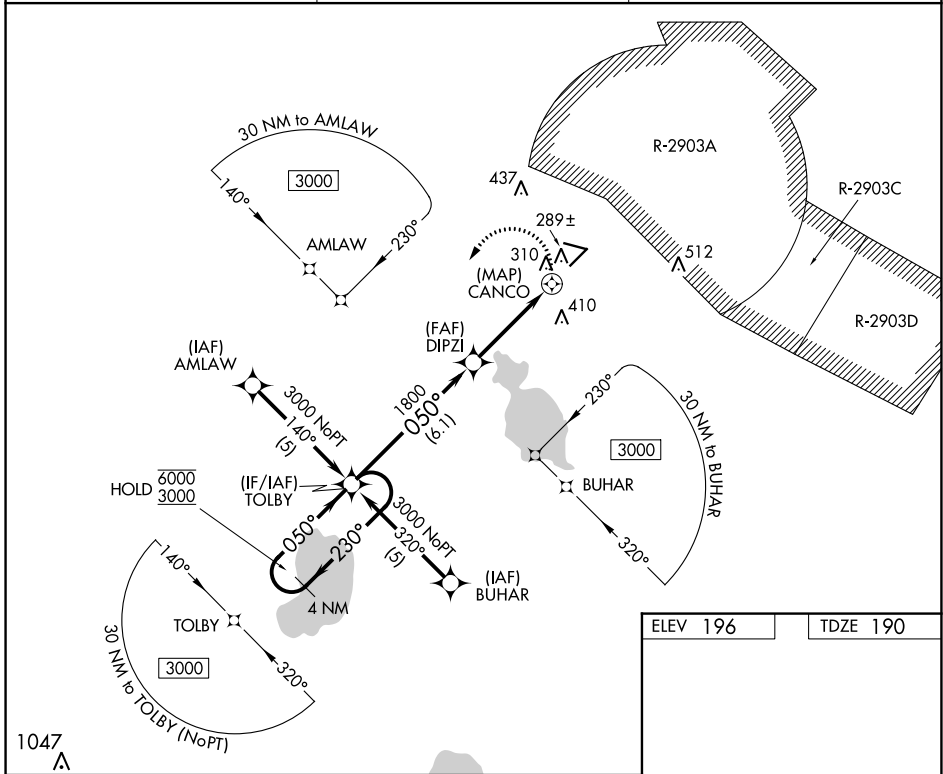
APP CRS	Rwy Idg	5046
050°	TDZE	190
	Apt Elev	196

RNAV (GPS) RWY 5

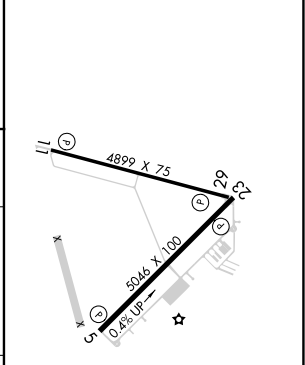
KEYSTONE HEIGHTS (42J)

RNP APCH.	<p>⚠ Circling to Rwy 11, 23, 29 NA at night. Circling NA for Cats B and C northeast of Rwy 11-29. Rwy 5 helicopter visibility reduction below 3/4 SM NA. When local altimeter setting not received, use Gainesville altimeter setting and increase all MDAs 60 feet.</p>	MISSED APPROACH: Climbing left turn to 3000 direct TOLBY and hold.
-----------	---	--

AWOS-3 124.275	JACKSONVILLE APP CON 118.175 338.25	UNICOM 122.7 (CTAF) 0
--------------------------	---	---------------------------------



ELEV 196	TDZE 190
----------	----------



CATEGORY	A	B	C	D
LNVA MDA	600-1¼ 410 (500-1¼)			NA
CIRCLING	620-1¼ 424 (500-1¼)	660-1¼ 464 (500-1¼)	720-1½ 524 (600-1½)	NA

REIL Rws 5, 11 and 23 0
MIRL Rwy 5-23 0
HIRL Rwy 11-29 0

SE-3, 22 FEB 2024 to 21 MAR 2024

SE-3, 22 FEB 2024 to 21 MAR 2024