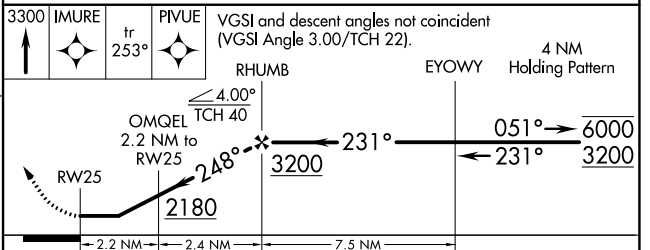
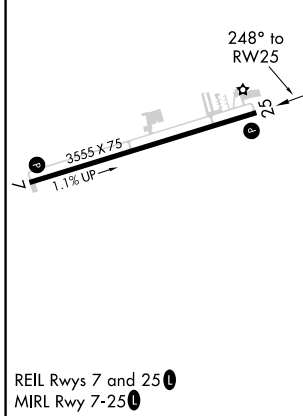
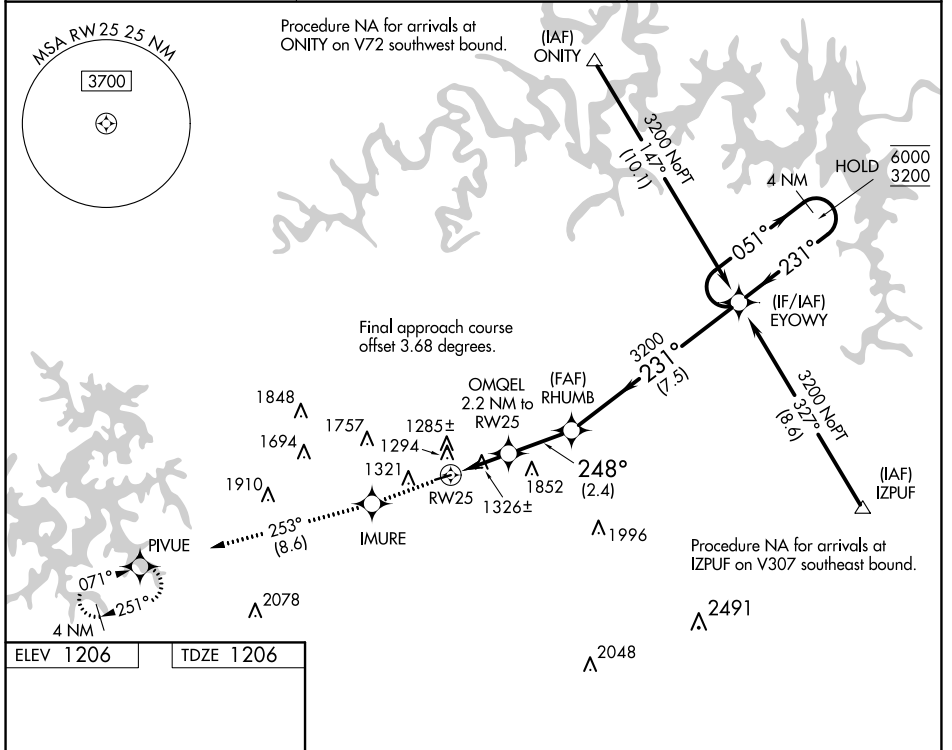


WAAS CH 86442 W25A	APP CRS 248°	Rwy Idg TDZE Apt Elev	3555 1206 1206
--	------------------------	-----------------------------	---

RNAV (GPS) RWY 25

CARROLL COUNTY (4M1)

RNP APCH. ▼ Rwy 25 helicopter visibility reduction below 3/4 SM NA. Use Branson altimeter setting; when not received, use Rogers altimeter setting and increase all MDA 20 feet. ▲ NA		MISSED APPROACH: Climb to 3300 direct IMURE and on track 253° to PIVUE and hold.
BBG AWOS-3 124.625	RAZORBACK APPROACH* 126.6 305.2	CTAF 122.9



CATEGORY	A	B	C	D
LP MDA	1660-1	454 (500-1)		NA
LNAV MDA	1660-1	454 (500-1)		NA
C CIRCLING	1700-1 494 (500-1)	1980-1 774 (800-1)		NA

SC-1, 27 JAN 2022 to 24 FEB 2022

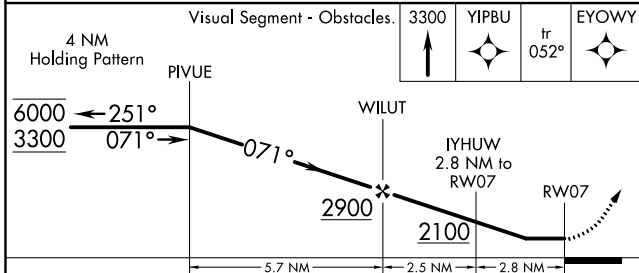
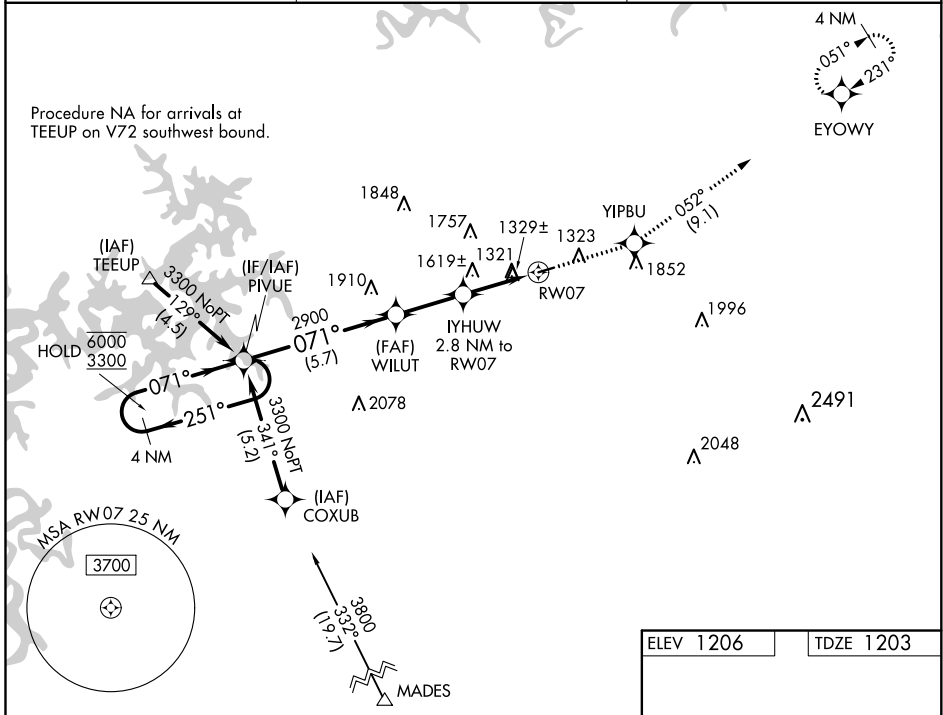
SC-1, 27 JAN 2022 to 24 FEB 2022

WAAS CH 40242 W07A	APP CRS 071°	Rwy ldg TDZE 1203 Apt Elev 1206	3555
--	------------------------	---	-------------

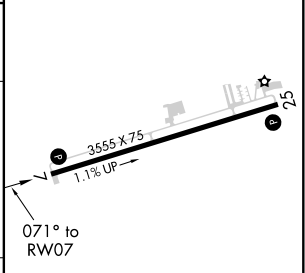
RNAV (GPS) RWY 7

CARROLL COUNTY (4M1)

RNP APCH.		MISSED APPROACH: Climb to 3300 direct YIPBU and on track 052° to EYOWY and hold.
BBG AWOS-3 124.625	RAZORBACK APPROACH ★ 126.6 305.2	CTAF 122.9



ELEV 1206	TDZE 1203
-----------	-----------



CATEGORY	A	B	C	D
LP MDA	1660-1	457 (500-1)		NA
LNVA MDA	1940-1	737 (800-1)		NA
C CIRCLING	1940-1 734 (800-1)	1980-1 774 (800-1)		NA



SC-1, 27 JAN 2022 to 24 FEB 2022

SC-1, 27 JAN 2022 to 24 FEB 2022

REIL Rwy 7 and 25
MIRL Rwy 7-25