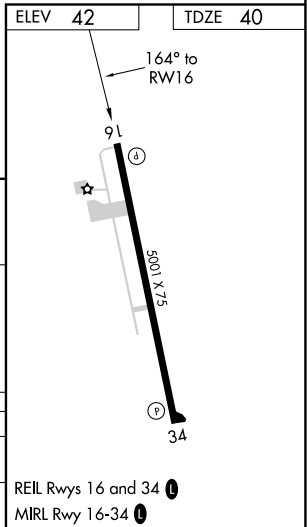
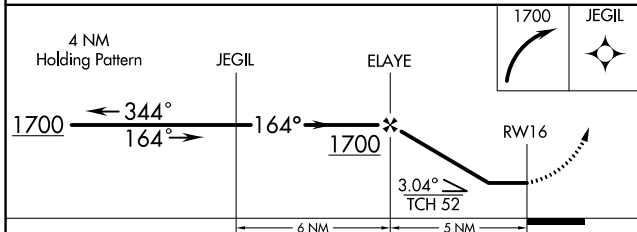
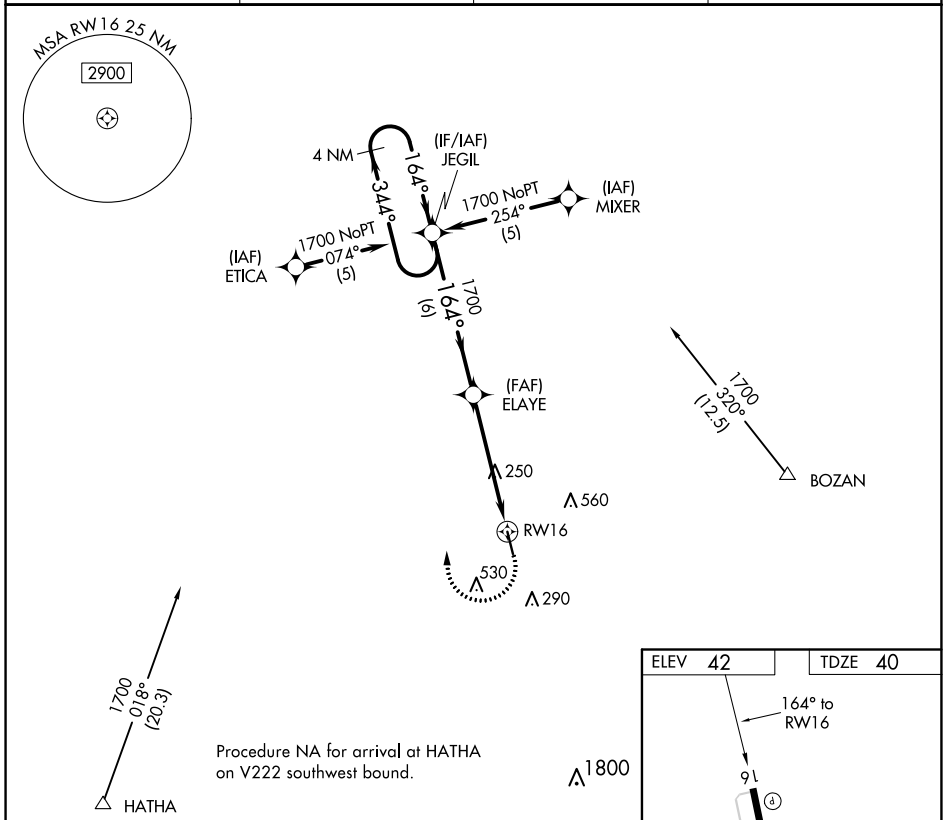


APP CRS 164°	Rwy Idg 5001
	TDZE 40
	Apt Elev 42

RNAV (GPS) RWY 16

EUNICE (4R7)

RNP APCH.		MISSED APPROACH: Climbing right turn to 1700 direct JEGIL WP and hold.	
<p>▼ Use Lafayette Rgnl/Paul Fournet Fld altimeter setting. Procedure NA at night. Rwy 16 helicopter visibility reduction below 1 SM NA.</p> <p>▲ NA</p>			
LFT ASOS 134.05	LAFAYETTE APP CON ★ 128.7 268.7	GCO 135.075	UNICOM 122.8 (CTAF) 0



CATEGORY	A	B	C	D
LNVA MDA	580-1	540 (600-1)	580-1½ 540 (600-1½)	NA
CIRCLING	620-1	578 (600-1)	940-2¾ 898 (900-2¾)	NA

SC-4, 27 JAN 2022 to 24 FEB 2022

SC-4, 27 JAN 2022 to 24 FEB 2022

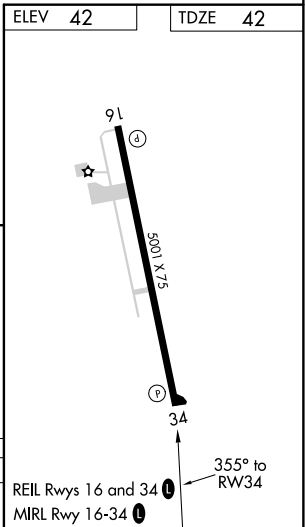
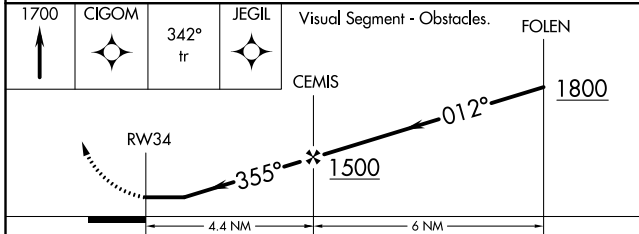
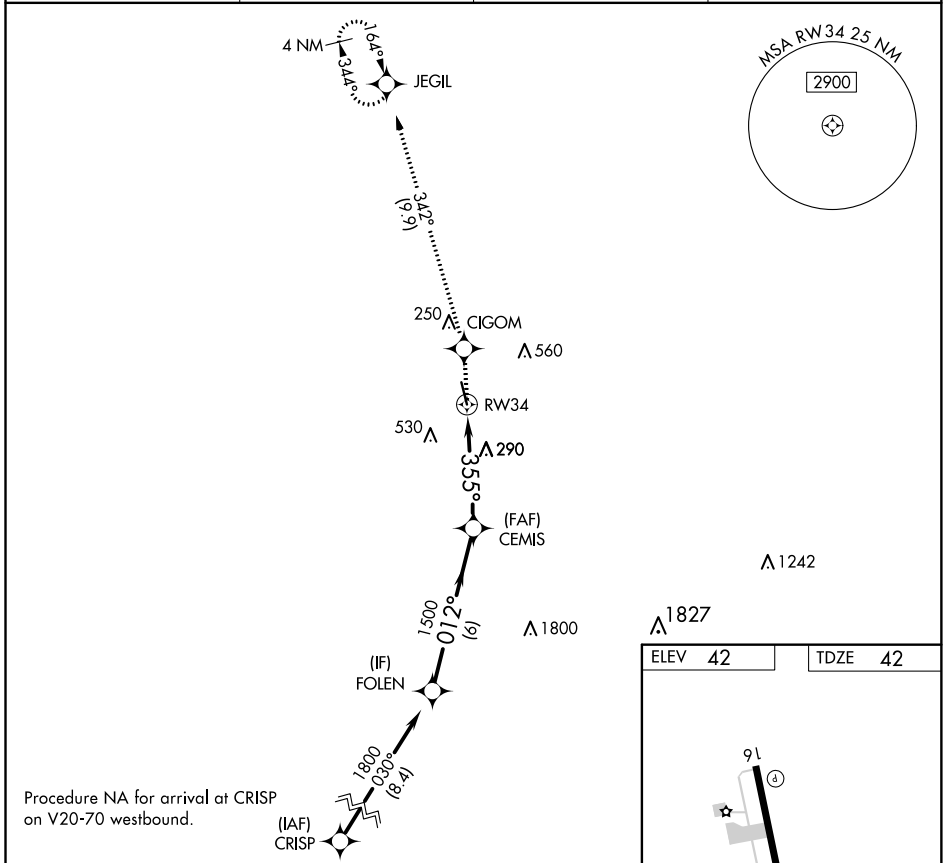
APP CRS 355°	Rwy Idg TDZE Apt Elev	5001 42 42
------------------------	-----------------------------	---------------------------------------

RNAV (GPS) RWY 34

EUNICE (4R7)

RNP APCH.	Procedure NA at night. Rwy 34 helicopter visibility reduction below 1 SM NA. Use Lafayette Rgnl/Paul Fournet Fld altimeter setting.	MISSED APPROACH: Climb to 1700 direct CIGOM and on a 342° track to JEGIL and hold.
⚠ NA		

LFT ASOS 134.05	LAFAYETTE APP CON ★ 128.7 268.7	GCO 135.075	UNICOM 122.8 (CTAF) 📻
---------------------------	---	-----------------------	--



CATEGORY	A	B	C	D
LNAV MDA	660-1	618 (700-1)	660-1¾ 618 (700-1¾)	NA

SC-4, 27 JAN 2022 to 24 FEB 2022

SC-4, 27 JAN 2022 to 24 FEB 2022