

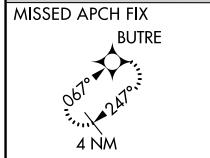
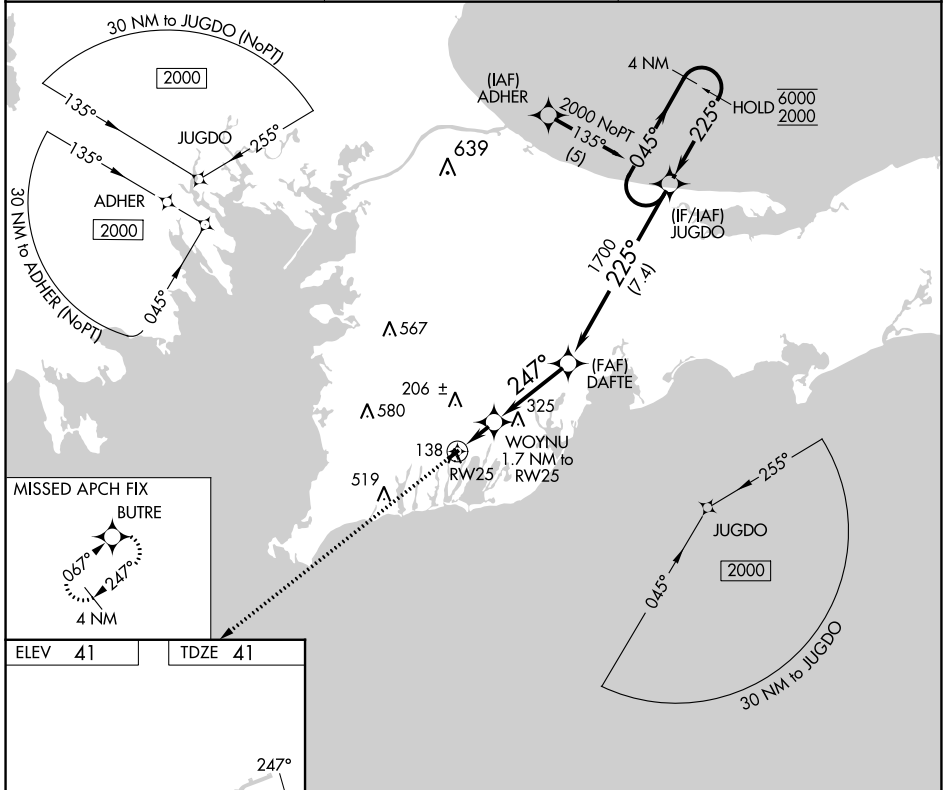
APP CRS	Rwy Idg	2298
247°	TDZE	41
	Apt Elev	41

RNAV (GPS) RWY 25

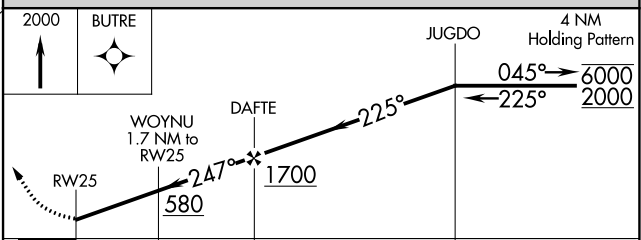
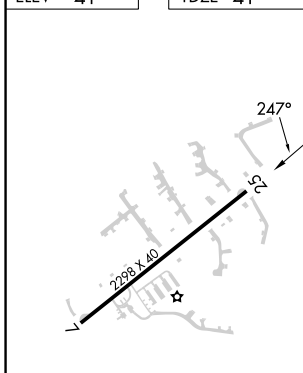
FALMOUTH AIRPARK (5B6)

RNP APCH - GPS.	MISSED APPROACH: Climb to 2000 direct BUTRE and hold.
<p>▼ Rwy 25 helicopter visibility reduction below 1 SM NA. Use Cape Cod Coast Guard Air Station altimeter setting. When not received, procedure NA. Procedure NA at night.</p> <p>▲ NA</p>	

BOSTON APP CON 118.2	UNICOM 123.075 (CTAF)	122.70
--------------------------------	---------------------------------	---------------



ELEV 41	TDZE 41
---------	---------



CATEGORY	A	B	C	D
LNAV MDA	500-1	459 (500-1)		NA
C CIRCLING	560-1	519 (600-1)		NA

LURL Rwy 7-25 **0**

NE-1, 22 FEB 2024 to 21 MAR 2024

NE-1, 22 FEB 2024 to 21 MAR 2024

APP CRS	Rwy Idg 2298
067°	TDZE 41
	Apt Elev 41

RNAV (GPS) RWY 7

FALMOUTH AIRPARK (5B6)

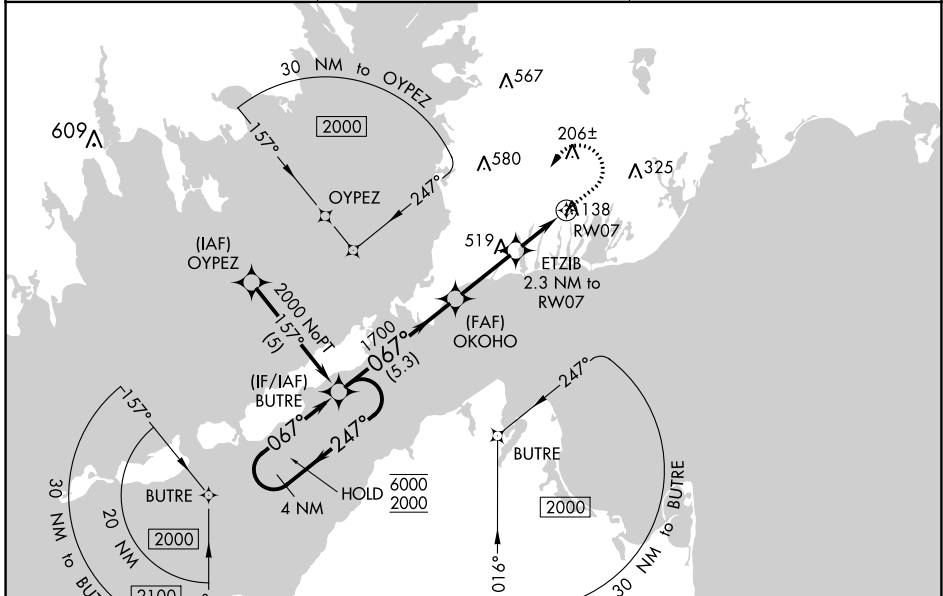
RNP APCH - GPS.

▼ Rwy 7 helicopter visibility reduction below 1 SM NA. Use Cape Cod Coast Guard Air Station altimeter setting. When not received, procedure NA. Procedure NA at night.

▲ NA

MISSED APPROACH: Climb to 800 then climbing left turn to 2000 direct BUTRE and hold.

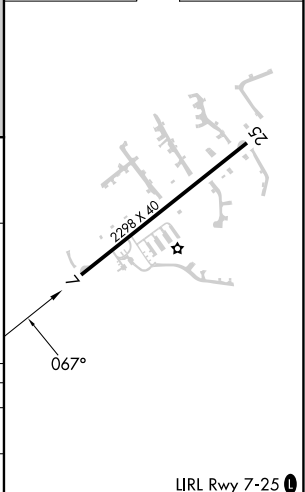
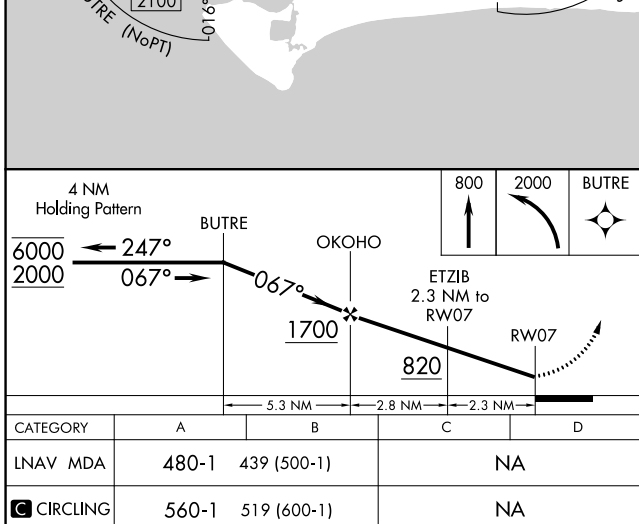
BOSTON APP CON 118.2	UNICOM 123.075 (CTAF)	122.7 0
--------------------------------	---------------------------------	-----------------------



NE-1, 22 FEB 2024 to 21 MAR 2024

NE-1, 22 FEB 2024 to 21 MAR 2024

ELEV 41	TDZE 41
---------	---------



FALMOUTH, MASSACHUSETTS
Orig 24MAR22

FALMOUTH AIRPARK (5B6)
RNAV (GPS) RWY 7

41°35'N-70°32'W

LIRL Rwy 7-25 **0**