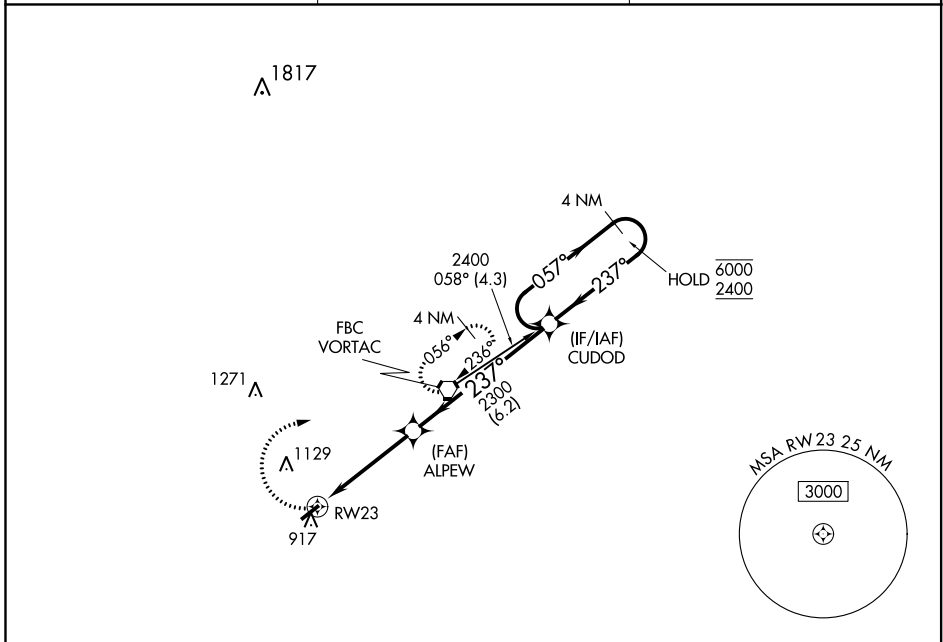


APP CRS <b>237°</b>	Rwy Idg <b>4126</b>
	TDZE <b>850</b>
	Apt Elev <b>851</b>

# RNAV (GPS) RWY 23

BLUFFTON (5G7)

RNP APCH.	MISSED APPROACH: Climbing right turn to 2500 direct FBC VORTAC and hold.	
<p>▼ Use Findlay altimeter setting; when not received use Lima altimeter setting and increase all MDA 20 feet and Circling Cat D visibility ¼ SM.</p> <p>▲ NA</p>		
FDY ASOS <b>132.85</b>	TOLEDO APP CON <b>120.8 317.55</b>	UNICOM <b>122.8 (CTAF) 0</b>

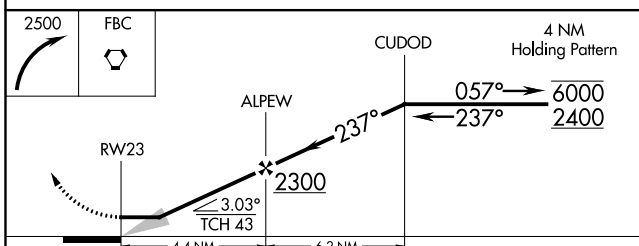


EC-2, 11 AUG 2022 to 08 SEP 2022

EC-2, 11 AUG 2022 to 08 SEP 2022

ELEV 851	TDZE 850
----------	----------

REIL Rwy 5  
REIL Rwy 23 0  
MIRL Rwy 5-23 0



CATEGORY	A	B	C	D
LNVA MDA	1340-1	490 (500-1)	1340-1 <sup>3</sup> / <sub>8</sub> 490 (500-1 <sup>3</sup> / <sub>8</sub> )	1340-1 <sup>1</sup> / <sub>2</sub> 490 (500-1 <sup>1</sup> / <sub>2</sub> )
CIRCLING	1360-1 509 (600-1)	1520-1 669 (700-1)	1520-1 <sup>3</sup> / <sub>4</sub> 669 (700-1 <sup>3</sup> / <sub>4</sub> )	1520-2 669 (700-2)

VORTAC FBC	APP CRS	Rwy Idg	4126
108.2	233°	TDZE	850
Chan 19		Apt Elev	851

# VOR RWY 23

BLUFFTON (5G7)

**▽** Use Findlay altimeter setting; when not received, use Lima altimeter setting and increase all MDA 20 feet, increase S-23 Cat C 1/8 SM and Circling Cat C/D visibility 1/4 SM.

**⚠ NA**

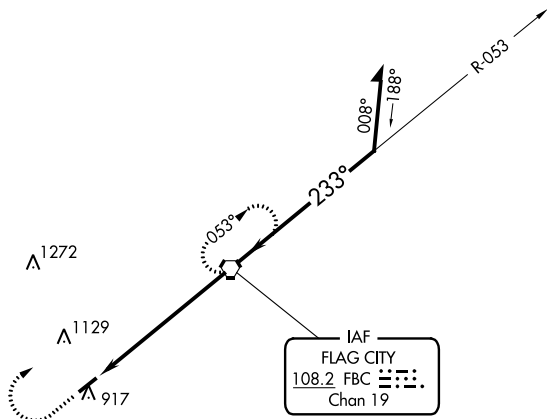
**MISSED APPROACH:** Climb to 2500 then right turn direct FBC VORTAC and hold.

FDY ASOS  
**132.85**

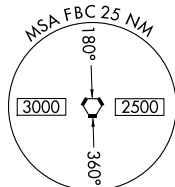
TOLEDO APP CON  
**120.8 317.55**

UNICOM  
**122.8 (CTAF) 0**

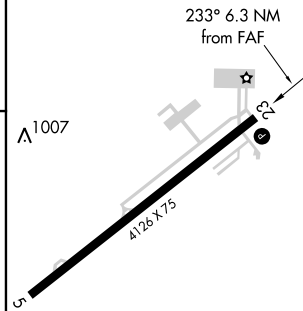
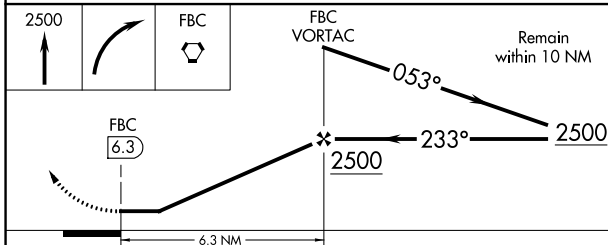
1817 **△**



IAF  
FLAG CITY  
108.2 FBC  
Chan 19



ELEV 851 TDZE 850



REIL Rwy 5  
REIL Rwy 23 **0**  
MIRL Rwy 5-23 **0**

FAF to MAP 6.3 NM

CATEGORY	A	B	C	D
S-23	1360-1 510 (600-1)		1360-1 5/8 510 (600-1 3/8)	1360-1 1/2 510 (600-1 1/2)
<b>C</b> CIRCLING	1360-1 509 (600-1)	1520-1 669 (700-1)	1520-1 3/4 669 (700-1 3/4)	1520-2 669 (700-2)
	Knots 60 90 120 150 180			
	Min:Sec 6:18 4:12 3:09 2:31 2:06			