

WAAS CH <b>42931</b> <b>W17A</b>	APP CRS <b>174°</b>	Rwy Idg TDZE <b>229</b> Apt Elev <b>229</b>	<b>5003</b>
--	------------------------	---	-------------

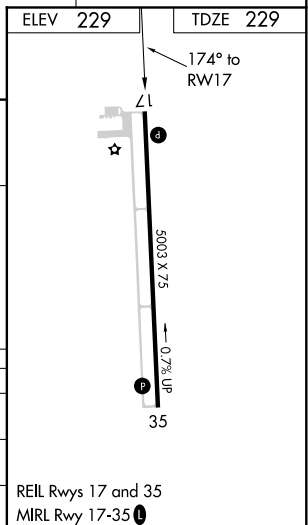
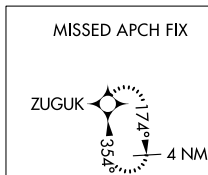
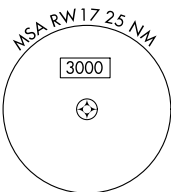
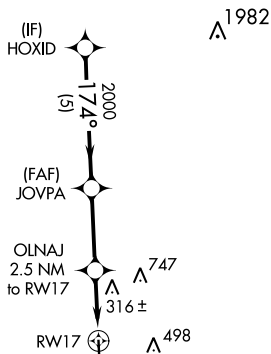
# RNAV (GPS) RWY 17

NAVASOTA MUNI (60R)

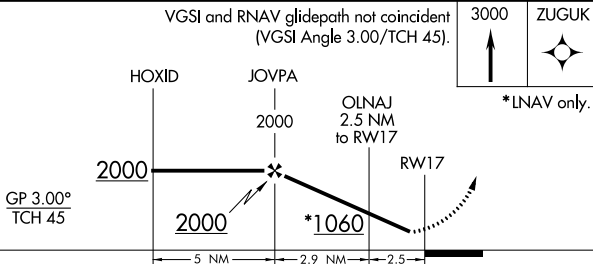
RNP APCH.	<p><b>▼</b> Use Brenham altimeter setting; when not received, use College Station altimeter setting and increase all DA 6 feet and all MDA 20 feet.  <b>▲ NA</b> Baro-VNAV NA. Rwy 17 helicopter visibility reduction below 3/4 SM NA.</p>	MISSED APPROACH: Climb to 3000 direct ZUGUK and hold.
-----------	--	---

11R AWOS-3 <b>121.125</b>	HOUSTON APP CON <b>134.3 360.85</b>	CTAF <b>122.9</b>	<b>123.3 0</b>
------------------------------	--	----------------------	----------------

## RADAR REQUIRED



VGSI and RNAV glidepath not coincident (VGSI Angle 3.00/TCH 45).



CATEGORY	A	B	C	D
LPV DA	529-1 300 (300-1)			
LNAV/VNAV DA	635-1 3/8 406 (500-1 3/8)			
LNAV MDA	620-1 391 (400-1)		620-1 1/8 391 (400-1 1/8)	

SC-5, 25 FEB 2021 to 25 MAR 2021

SC-5, 25 FEB 2021 to 25 MAR 2021

WAAS CH <b>42831</b> <b>W35A</b>	APP CRS <b>354°</b>	Rwy Idg TDZE Apt Elev	<b>5003</b> <b>215</b> <b>229</b>
--	------------------------	-----------------------------	---

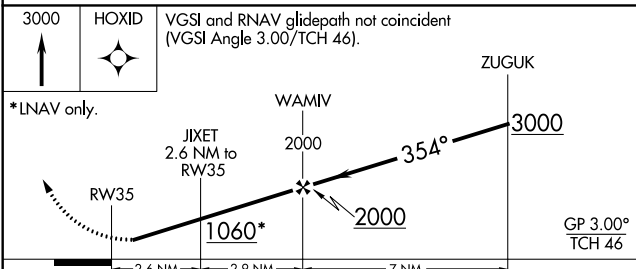
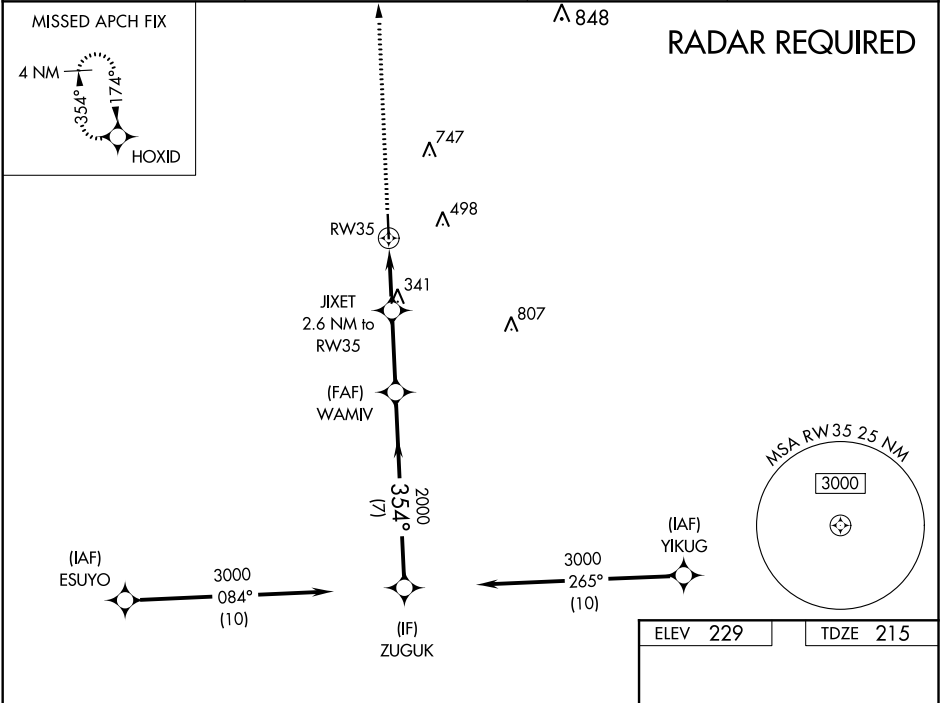
# RNAV (GPS) RWY 35

NAVASOTA MUNI (60R)

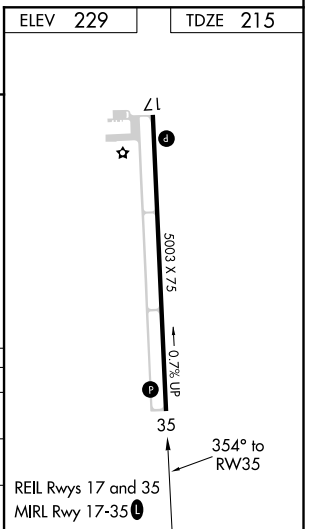
RNP APCH.  
 ▼ Use Brenham altimeter setting, when not received use College Station altimeter setting and increase all DA 6 feet and all MDA 20 feet.  
 ▲ NA Rwy 35 helicopter visibility reduction below 3/4 SM NA. Baro-VNAV NA.

MISSED APPROACH: Climb to 3000 direct HOXID and hold.

11R AWOS-3 <b>121.125</b>	HOUSTON APP CON <b>134.3 360.85</b>	CTAF <b>122.9</b>	<b>123.3</b>
------------------------------	--	----------------------	--------------



CATEGORY	A	B	C	D
LPV DA	525-1 310 (300-1)			
LNAV/VNAV DA	609-1 3/8 394 (400-1 3/8)			
LNAV MDA	660-1 445 (500-1)		660-1 3/8 445 (500-1 3/8)	



SC-5, 25 FEB 2021 to 25 MAR 2021

SC-5, 25 FEB 2021 to 25 MAR 2021

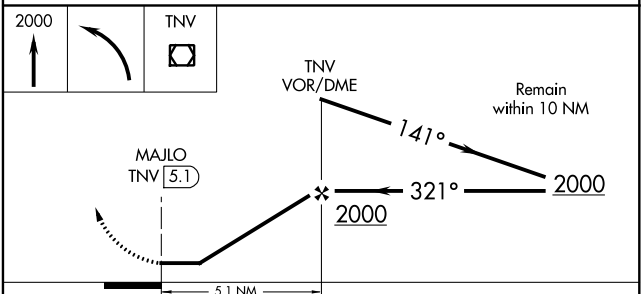
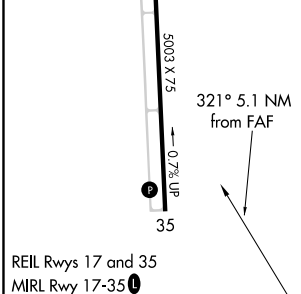
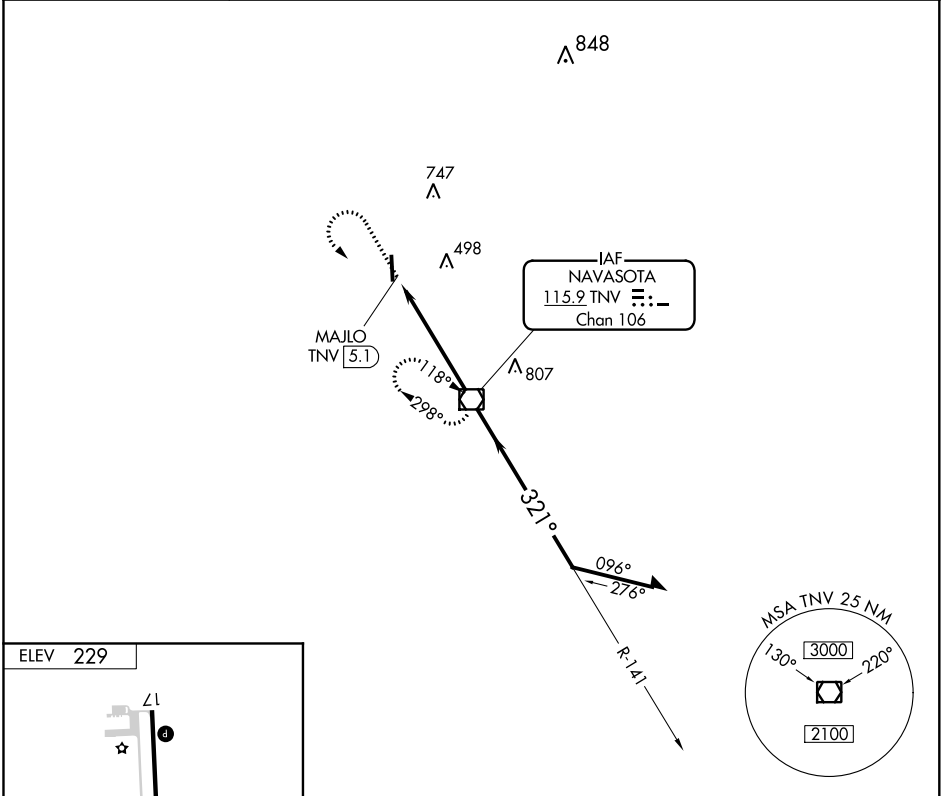
VOR/DME TNV <b>115.9</b> Chan <b>106</b>	APP CRS <b>321°</b>	Rwy Idg TDZE Apt Elev	<b>N/A</b> <b>N/A</b> <b>229</b>
--	------------------------	-----------------------------	--

**VOR-A**  
NAVASOTA MUNI (60R)

**▼** Use Brenham altimeter setting; when not received, use College Station altimeter setting and increase all MDA 20 feet and increase Cat C visibility ¼ mile.

**▲ NA** MISSED APPROACH: Climb to 2000 then left turn direct TNV VOR/DME and hold.

11R AWOS-3 <b>121.125</b>	HOUSTON APP CON <b>134.3 360.85</b>	CTAF <b>122.9</b>	<b>123.3 0</b>
------------------------------	--	----------------------	----------------



FAF to MAP 5.1 NM						
Knots	60	90	120	150	180	
Min:Sec	5:06	3:24	2:33	2:02	1:42	
CATEGORY	A		B		C	D
CIRCLING	820-1		591 (600-1)		820-1½	980-2½
					591 (600-1½)	751 (800-2½)