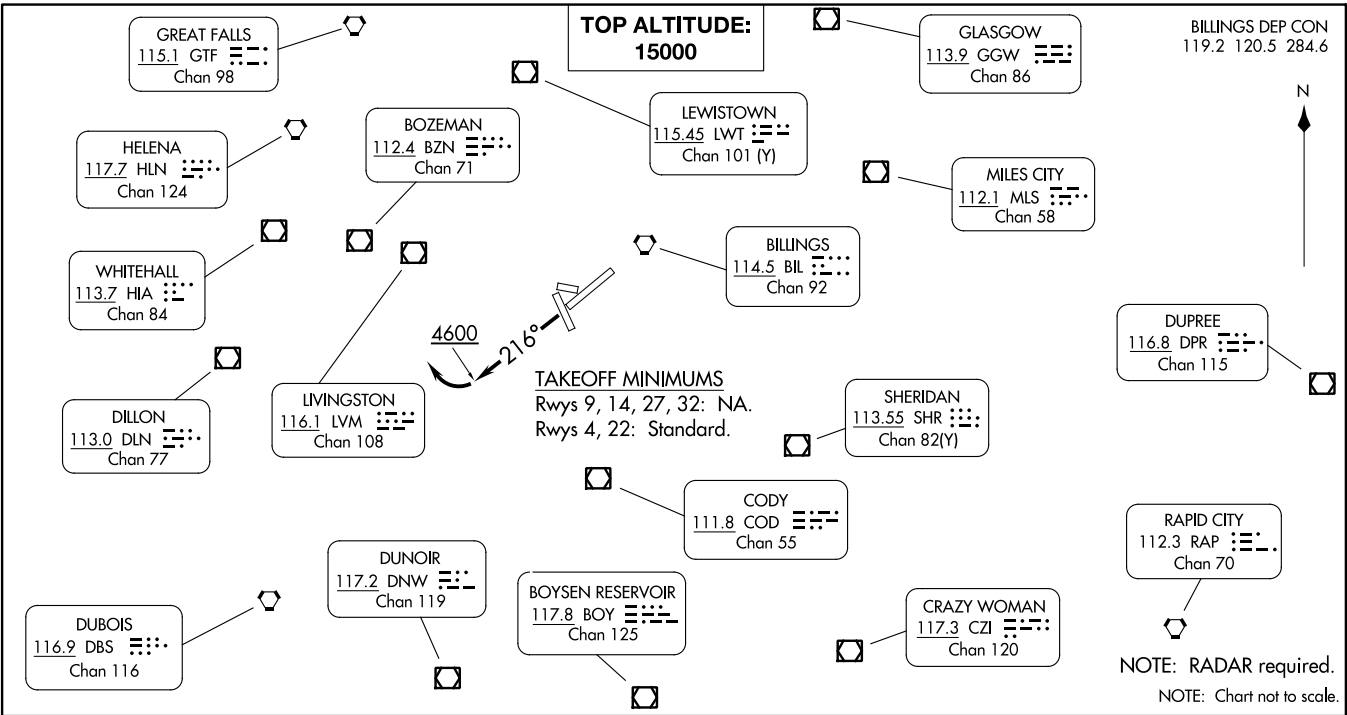


BILLINGS FIVE DEPARTURE
(BIL.5. BIL) 01FEB18

(BIL.5. BIL) 23334
BILLINGS FIVE DEPARTURE

AL-6781 (FAA)

LAUREL MUNI (6SS)
LAUREL, MONTANA



DEPARTURE ROUTE DESCRIPTION

TAKEOFF RUNWAY 4: Climb on assigned heading for vectors to assigned fix/route, thence. . . .

TAKEOFF RUNWAY 22: Climb heading 216° to 4600 before turning right, then on assigned heading for vectors to assigned fix/route, thence. . . .

. . . . maintain 15000 or assigned lower altitude. Expect clearance to filed altitude/flight level five minutes after departure.

LOST COMMUNICATIONS: If no transmissions are received for 1 minute after departure, fly last assigned heading until reaching 7000. Proceed direct BIL VORTAC, then on last routing cleared and climb to filed altitude.

LAUREL, MONTANA
LAUREL MUNI (6SS)