

APP CRS	Rwy Idg	<b>3335</b>
<b>143°</b>	TDZE	<b>121</b>
	Apt Elev	<b>121</b>

# RNAV (GPS) RWY 14

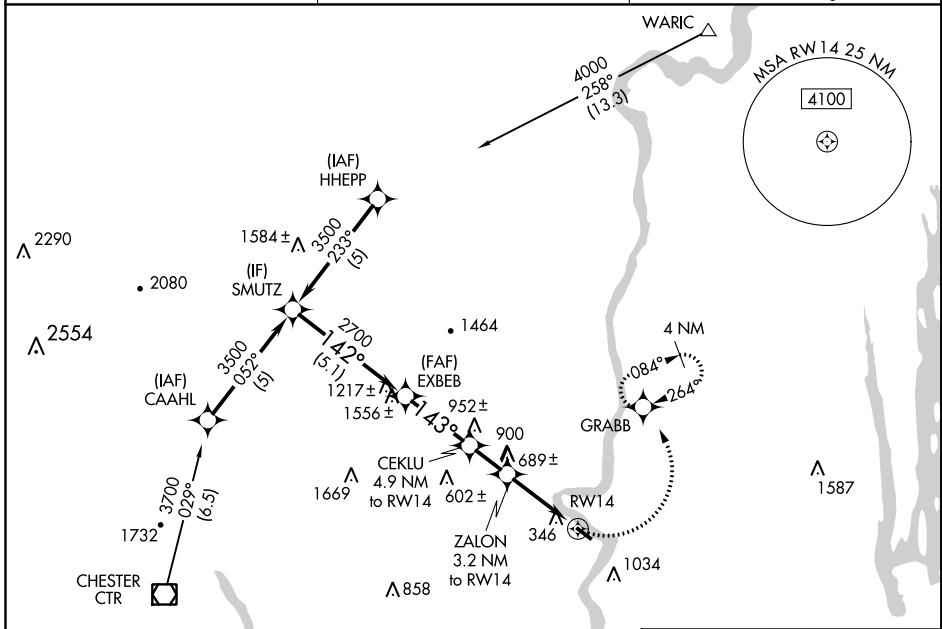
NORTHAMPTON (7B2)

RNP APCH.	<p>▼ Procedure NA at night. Obtain local altimeter setting on CTAF; when not received, use Windsor Locks altimeter setting. Rwy 14 helicopter visibility reduction below 1 SM NA.</p> <p>▲ NA</p>	<p>MISSED APPROACH: Climbing left turn to 3000 direct GRABB and hold, continue climb-in-hold to 3000.</p>
YANKEE APP CON		

YANKEE APP CON  
**125.35 281.5**

CLNC DEL  
**133.6**

UNICOM  
**122.7 (CTAF) 0**



NE-1, 26 MAR 2020 to 23 APR 2020

NE-1, 26 MAR 2020 to 23 APR 2020

<p>VGSI and descent angles not coincident (VGSI Angle 4.50/TCH 60).                  * 1820 when using Windsor Locks altimeter setting.                  ** 1260 when using Windsor Locks altimeter setting.</p>				<p>3000</p>	ELEV 121	TDZE 121
<p>SMUTZ 3500 → 142° → EXBEB 2700 → 143° → CEKLU 1740 → 3.07° TCH 40 → ZALON 1180 → RWY 14</p> <p>Procedure Turn NA</p>						
CATEGORY	A	B	C	D		
LNAV MDA	940-1 819 (900-1)	940-1¼ 819 (900-1¼)			NA	
CIRCLING	940-1 819 (900-1)	940-1¼ 819 (900-1¼)			NA	
WINDSOR LOCKS ALTIMETER SETTING MINIMUMS						
LNAV MDA	1020-1¼	899 (900-1¼)			NA	
CIRCLING	1020-1¼	899 (900-1¼)			NA	
MIRL Rwy 14-32 0						

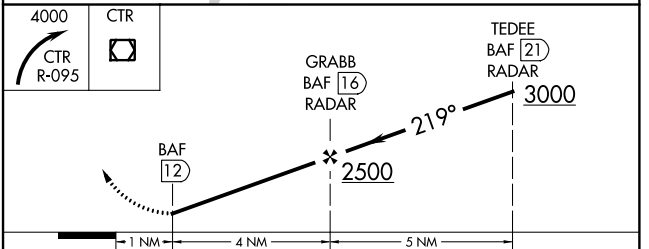
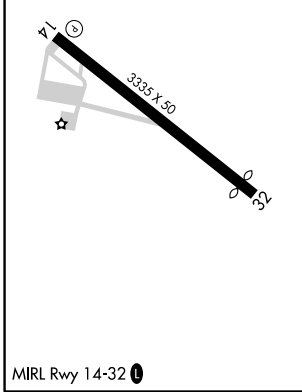
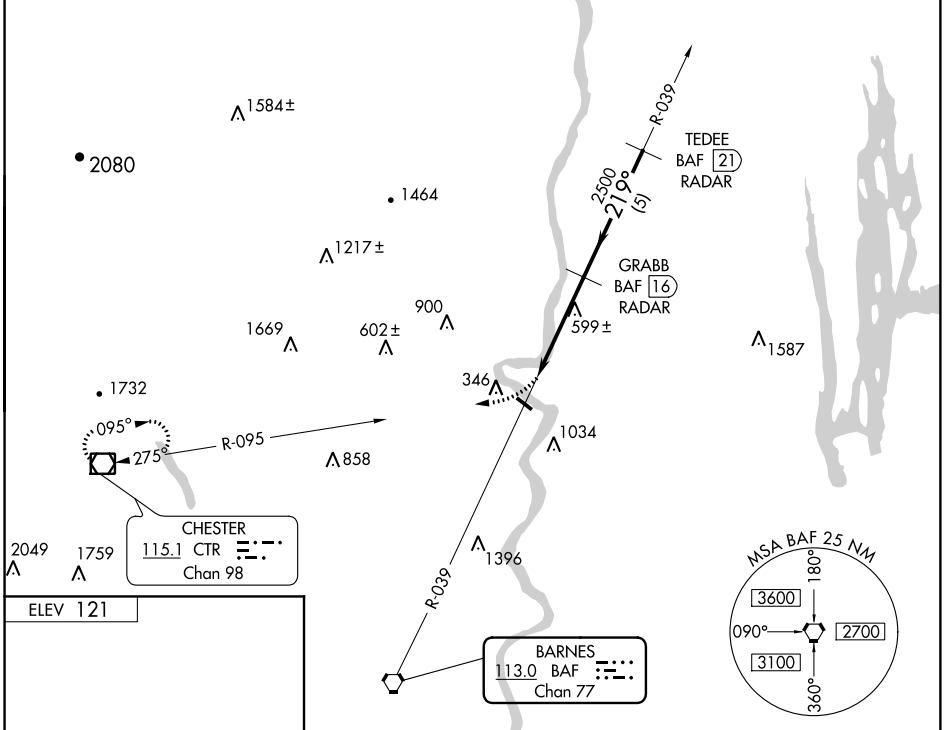
VORTAC BAF <b>113.0</b> Chan <b>77</b>	APP CRS <b>219°</b>	Rwy Idg TDZE Apt Elev	N/A N/A <b>121</b>
--	------------------------	-----------------------------	--------------------------

**VOR/DME-B**  
NORTHAMPTON (7B2)

▼ Obtain local altimeter on CTAF; when not received, use Windsor Locks altimeter setting.  
▲ NA MISSED APPROACH: Climbing right turn to 4000 via CTR R-095 to CTR VOR/DME and hold.

YANKEE APP CON <b>125.35 281.5</b>	CLNC DEL <b>133.6</b>	UNICOM <b>122.7 (CTAF)</b> <span>①</span>
---------------------------------------	--------------------------	--

**RADAR REQUIRED**



CATEGORY	A	B	C	D
CIRCLING	1300-1¼ 1179 (1200-1¼)	1300-1½ 1179 (1200-1½)	NA	
WINDSOR LOCKS ALTIMETER SETTING MINIMUMS				
CIRCLING	1360-1¼ 1239 (1300-1¼)	1360-1½ 1239 (1300-1½)	NA	

NE-1, 26 MAR 2020 to 23 APR 2020

NE-1, 26 MAR 2020 to 23 APR 2020