

APP CRS	Rwy Idg	3500
160°	TDZE	1481
	Apt Elev	1482

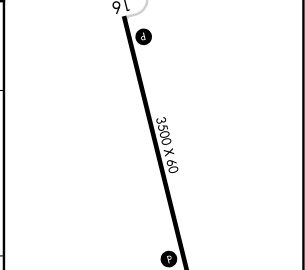
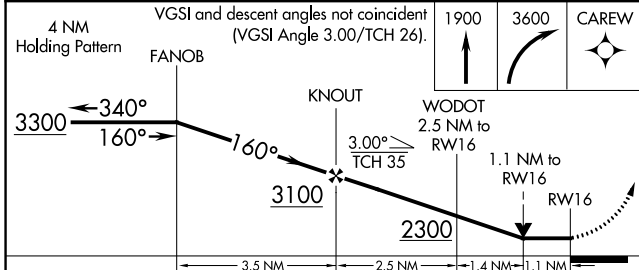
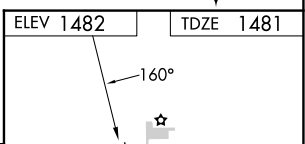
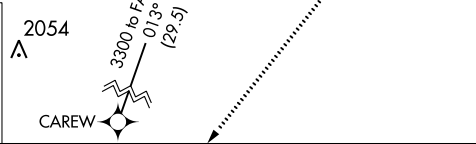
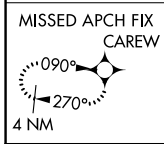
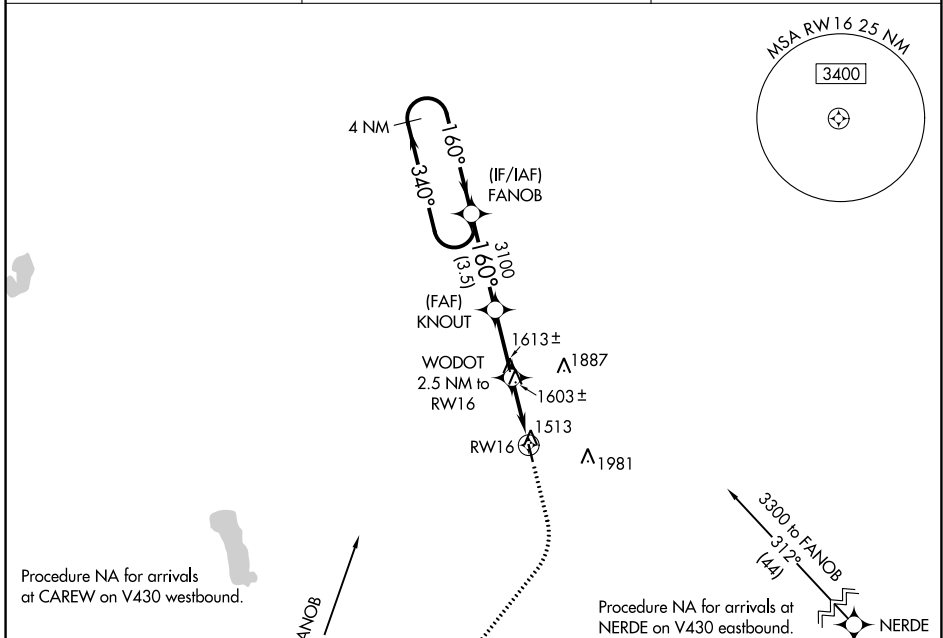
RNAV (GPS) RWY 16

CANDO MUNI (9D7)

⚠ NA When local altimeter setting not received, use Devils Lake altimeter setting and increase all MDAs 80 feet. DME/DME RNP-0.3 NA. VDP NA with Devils Lake altimeter setting. Helicopter visibility reduction below 3/4 SM NA.

MISSED APPROACH: Climb to 1900 then climbing right turn to 3600 direct CAREW and hold.

AWOS-3 118.325	MINNEAPOLIS CENTER 124.2 270.3	CTAF 122.9 0
--------------------------	--	------------------------



CATEGORY	A	B	C	D
LNVA MDA	1860-1	379 (400-1)		NA
CIRCLING	1900-1 418 (500-1)	1940-1 458 (500-1)		NA

ELEV 1482	TDZE 1481
-----------	-----------

MIRL Rwy 16-34 0

NC-1, 22 FEB 2024 to 21 MAR 2024

NC-1, 22 FEB 2024 to 21 MAR 2024

WAAS CH 69537 W34A	APP CRS 340°	Rwy Idg 3500 TDZE 1482 Apt Elev 1482
--	------------------------	---

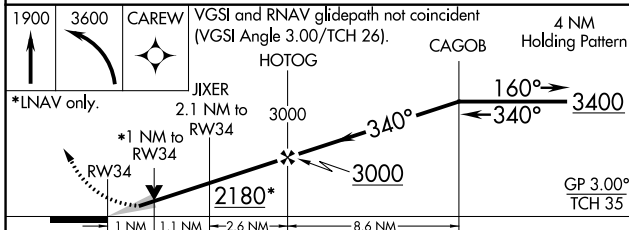
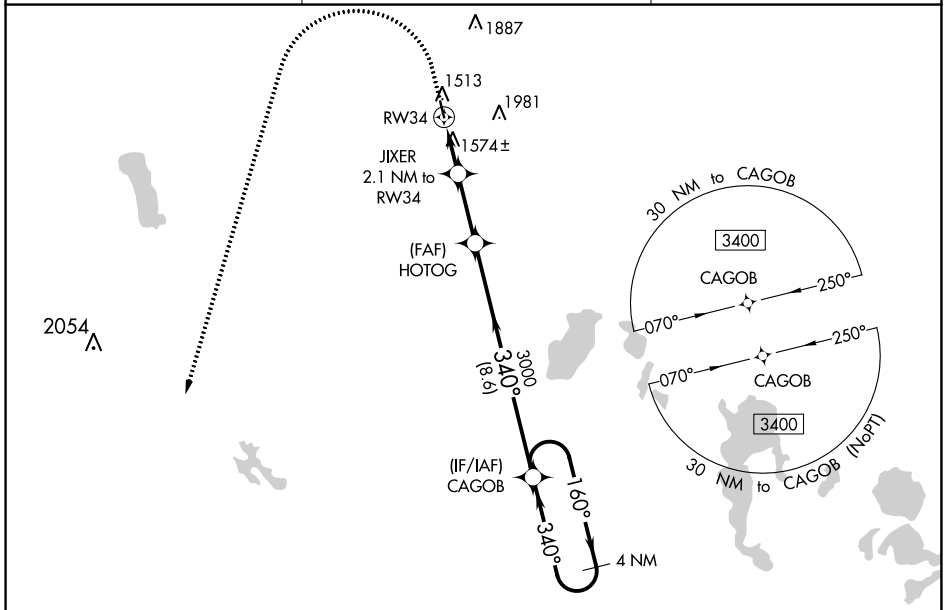
RNAV (GPS) RWY 34

CANDO MUNI (9D7)

▽ DME/DME RNP-0.3 NA. When local altimeter not received, use Devils Lake altimeter setting and increase all DA 63 feet and all MDA 80 feet. Increase LPV visibility 1/8 mile all Cats and LNAV/VNAV visibility 1/4 mile all Cats. Baro-VNAV and VDP NA when using Devils Lake altimeter setting. For uncompensated Baro-VNAV systems, LNAV/VNAV NA below -17°C (0°F) or above 54°C (130°F).

MISSED APPROACH:
Climb to 1900 then climbing left turn to 3600 direct CAREW and hold.

AWOS-3 118.325	MINNEAPOLIS CENTER 124.2 270.3	CTAF 122.9 0
--------------------------	--	-------------------------------



CATEGORY	A	B	C	D
LPV DA	1732-1	250 (300-1)		NA
LNAV/VNAV DA	1871-1 3/8	389 (400-1 3/8)		NA
LNAV MDA	1840-1	358 (400-1)		NA
C CIRCLING	1900-1 418 (500-1)	1940-1 458 (500-1)		NA

