

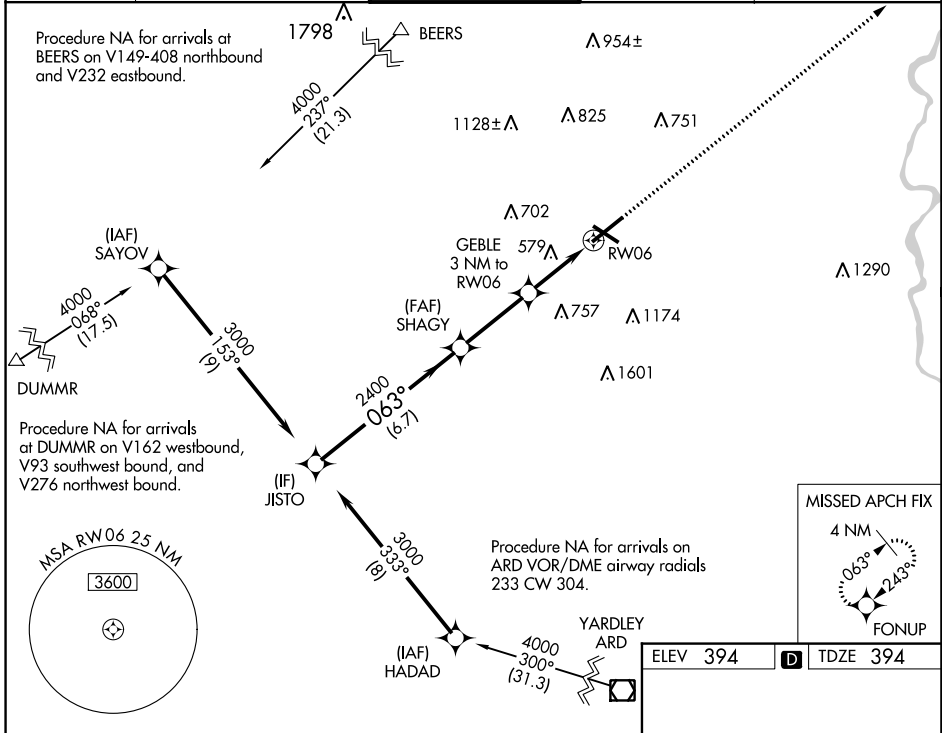
WAAS CH <b>69432</b> <b>W06A</b>	APP CRS <b>063°</b>	Rwy Idg TDZE <b>394</b> Apt Elev <b>394</b>	<b>7599</b>
--	------------------------	---	-------------

# RNAV (GPS) RWY 6

LEHIGH VALLEY INTL (ABE)

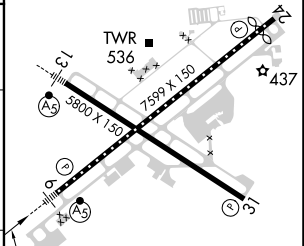
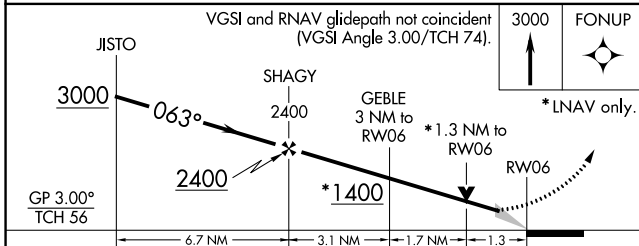
RNP APCH.	<p>For uncompensated Baro-VNAV systems, LNAV/VNAV NA below -8°C (18°F) or above 54°C (130°F). For inop ALS, increase LNAV Cat C/D visibility to 1½ SM. **RVR 1800 authorized with use of FD or AP or HUD to DA.</p>	MALSR	MISSED APPROACH: Climb to 3000 direct FONUP and hold.
-----------	---	-------	---

ATIS <b>126.975</b>	ALLENTOWN APP CON <b>119.65 124.45 351.8</b>	ALLENTOWN TOWER <b>120.5 257.95</b>	GND CON <b>121.9 257.95</b>	CLNC DEL <b>124.05 257.95</b>
------------------------	---	--	--------------------------------	----------------------------------



NE-4, 22 FEB 2024 to 21 MAR 2024

NE-4, 22 FEB 2024 to 21 MAR 2024



CATEGORY	A	B	C	D
LPV DA **	594/24		200 (200-½)	
LNAV/ DA VNAV	644/24		250 (300-½)	
LNAV MDA	840/24	446 (500-½)	840/45	446 (500-¾)
CIRCLING	900-1	506 (600-1)	1180-2¼ 786 (800-2¼)	1600-3 1206 (1300-3)

REIL Rwy 24 and 31  
HIRL Rwy 6-24 and 13-31