

WAAS CH <b>70724</b> <b>W23A</b>	APP CRS <b>230°</b>	Rwy Idg TDZE Apt Elev	<b>6011</b> <b>464</b> <b>468</b>
--	------------------------	-----------------------------	---

# RNAV (GPS) RWY 23

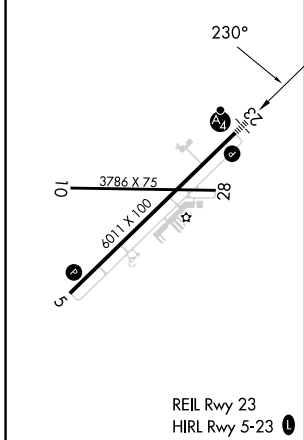
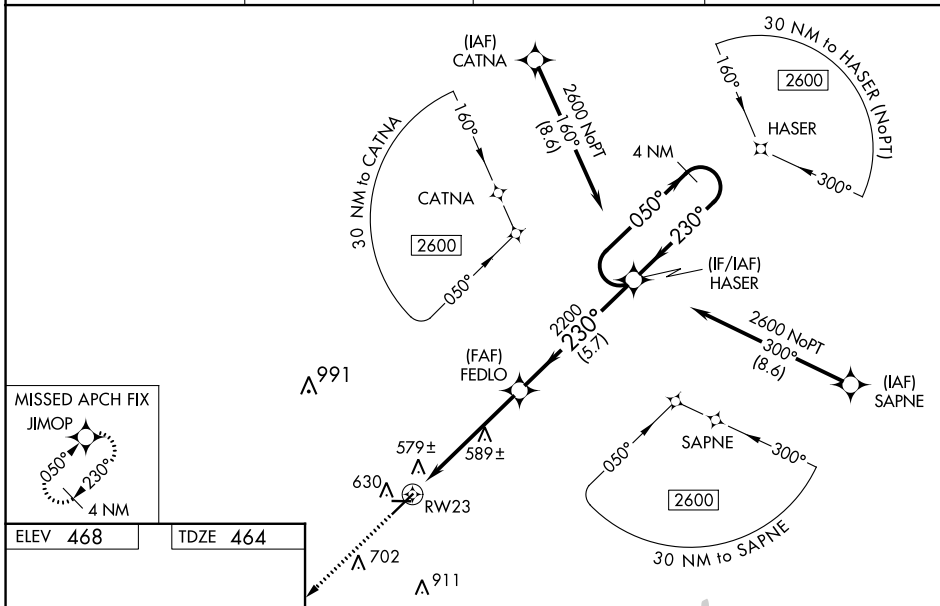
JIMMY CARTER RGNL (ACJ)

RNP APCH-GPS.

**⚠** Baro-VNAV NA and VDP NA when using Columbus altimeter setting. For uncompensated Baro-VNAV systems, LNAV/VNAV NA below -15°C or above 41°C. For inop ALS when using Columbus altimeter setting, increase LPV and LNAV/VNAV all Cats visibility to 1 1/8 SM. Rwy 23 helicopter visibility reduction below 3/4 SM NA. When local altimeter setting not received, use Columbus altimeter setting and increase LPV DA to 876 feet and all visibilities 1/4 SM; increase LNAV/VNAV DA to 881 feet and all visibilities 1/4 SM; increase all MDAs 120 feet and LNAV visibility Cats C/D 3/8 SM, and Circling visibility Cat C 1/2 SM and Cat D 1/4 SM. For inop ALS, increase LPV and LNAV/VNAV all Cats visibility to 3/8 SM. Circling Rwy 10, 28 NA at night.

**MAISF** MISSED APPROACH: Climb to 2600 direct JIMOP and hold.

AWOS-3 <b>128.375</b>	ATLANTA APP CON * <b>124.2 323.1</b>	CLNC DEL <b>119.95</b>	UNICOM <b>122.8 (CTAF) 0</b>
--------------------------	---	---------------------------	---------------------------------



ELEV 468	TDZE 464	2600 JIMOP		VGSi and RNAV glidepath not coincident (VGSi Angle 3.00/TCH 59).		4 NM Holding Pattern	
*LNAV only.		*1 NM to RW23		FEDLO 2200		HASER 2600	
RW23		1 NM		4.3 NM		5.7 NM	
CATEGORY	A	B	C	D			
LPV DA		760-3/4	296 (300-3/4)				
LNAV/VNAV DA		765-3/4	301 (300-3/4)				
LNAV MDA	840-3/4	376 (400-3/4)		840-3/4	376 (400-3/4)		
CIRCLING	940-1	472 (500-1)		1020-1 1/2	1280-2 3/4		
				552 (600-1 1/2)	812 (900-2 3/4)		

SE-4, 22 FEB 2024 to 21 MAR 2024

SE-4, 22 FEB 2024 to 21 MAR 2024