

(AKUMY5.AKUMY) 23222

AL-9380 (FAA)

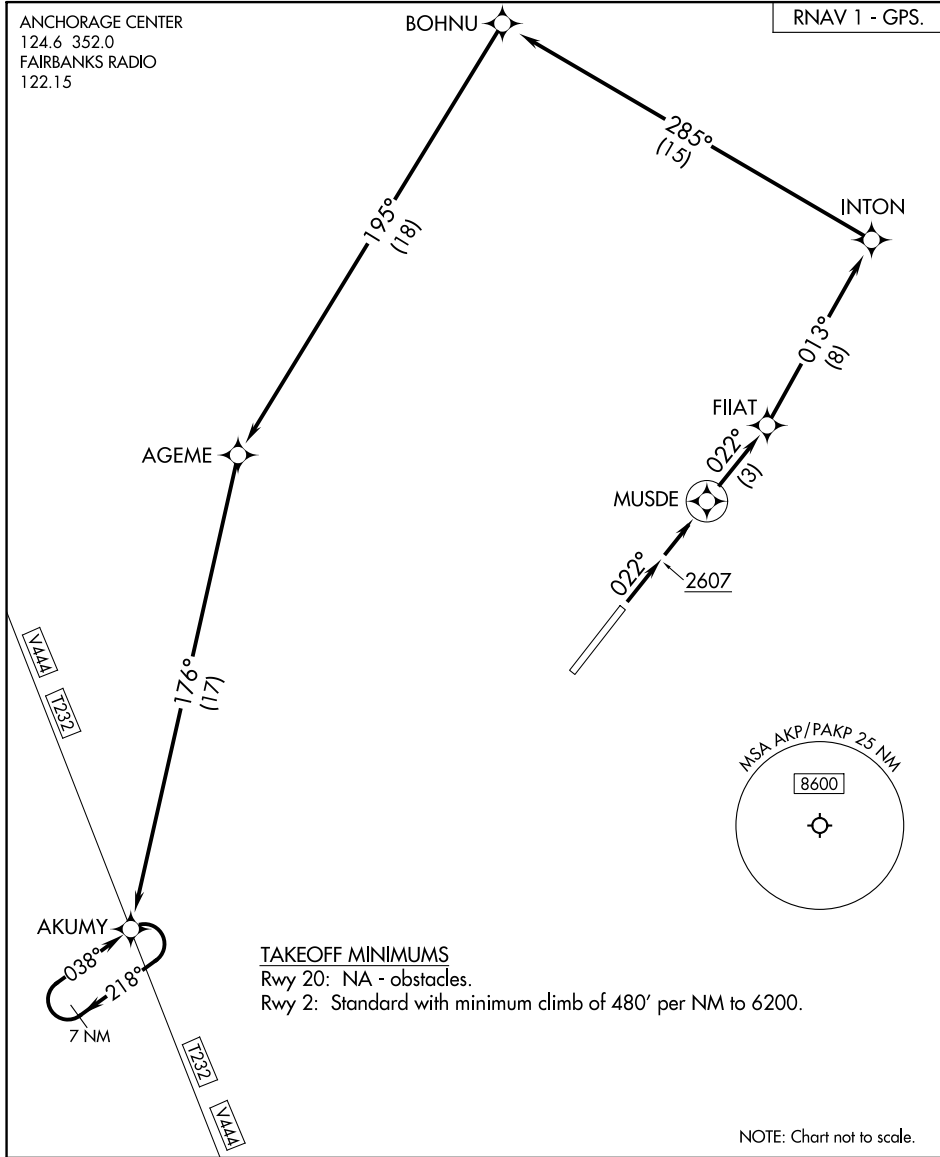
ANAKTUVUK PASS (AKP) (PAKP)

AKUMY FIVE DEPARTURE (OBSTACLE) (RNAV)

ANAKTUVUK PASS, ALASKA

ANCHORAGE CENTER
124.6 352.0
FAIRBANKS RADIO
122.15

RNAV 1 - GPS.



AK, 25 JAN 2024 to 21 MAR 2024

AK, 25 JAN 2024 to 21 MAR 2024

TAKEOFF MINIMUMS

Rwy 20: NA - obstacles.

Rwy 2: Standard with minimum climb of 480' per NM to 6200.

NOTE: Chart not to scale.

DEPARTURE ROUTE DESCRIPTION

TAKEOFF RUNWAY 2: Climb on heading 022° to 2607, then direct MUSDE, then on depicted route to AKUMY, maintain 9000 or higher as assigned.

AKUMY FIVE DEPARTURE (OBSTACLE) (RNAV)

(AKUMY5.AKUMY) 10AUG23

ANAKTUVUK PASS, ALASKA
ANAKTUVUK PASS (AKP) (PAKP)