

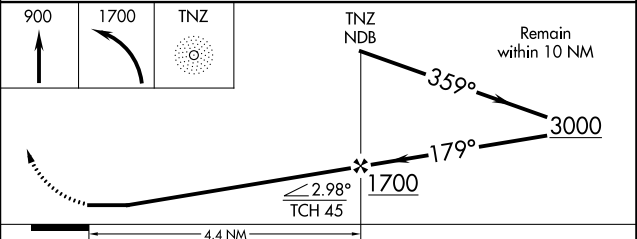
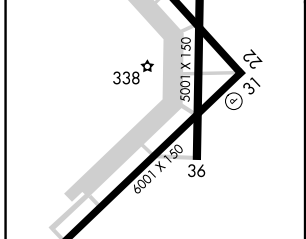
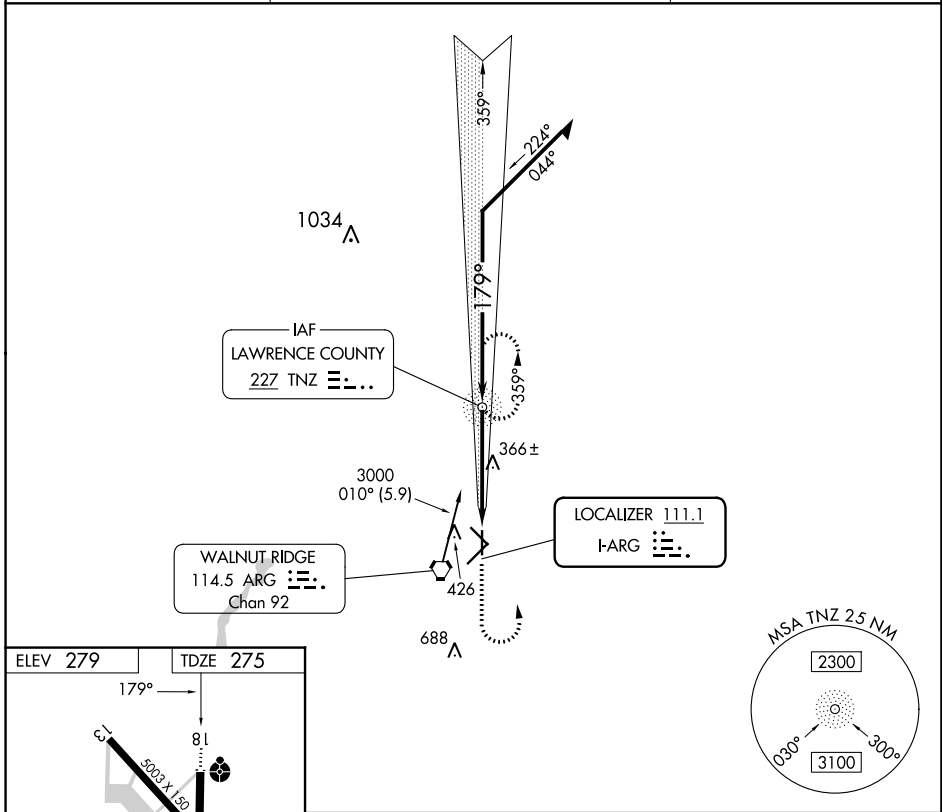
LOC I-ARG 111.1	APP CRS 179°	Rwy Idg TDZE Apt Elev	5001 275 279
---------------------------	------------------------	-----------------------------	---

LOC RWY 18

WALNUT RIDGE RGNL (ARG)

ADF required.	ODALS	MISSED APPROACH: Climb to 900 then climbing left turn to 1700 direct TNZ NDB and hold.
 Inop table does not apply to S-18 Cat D.		

AWOS-3PT 126.525	MEMPHIS CENTER 120.075 289.4	UNICOM 122.8 (CTAF) 0
----------------------------	--	---------------------------------



	CATEGORY		A		B		C		D	
S-18	620-3/4	345 (400-3/4)	620-7/8	345 (400-7/8)	620-1 1/4	345 (400-1 1/4)	620-1 1/4	345 (400-1 1/4)	620-1 1/4	345 (400-1 1/4)
CIRCLING	760-1	481 (500-1)	800-1 1/2	521 (600-1 1/2)	1000-2 1/4	721 (800-2 1/4)	1000-2 1/4	721 (800-2 1/4)	1000-2 1/4	721 (800-2 1/4)

SC-1, 22 FEB 2024 to 21 MAR 2024

SC-1, 22 FEB 2024 to 21 MAR 2024