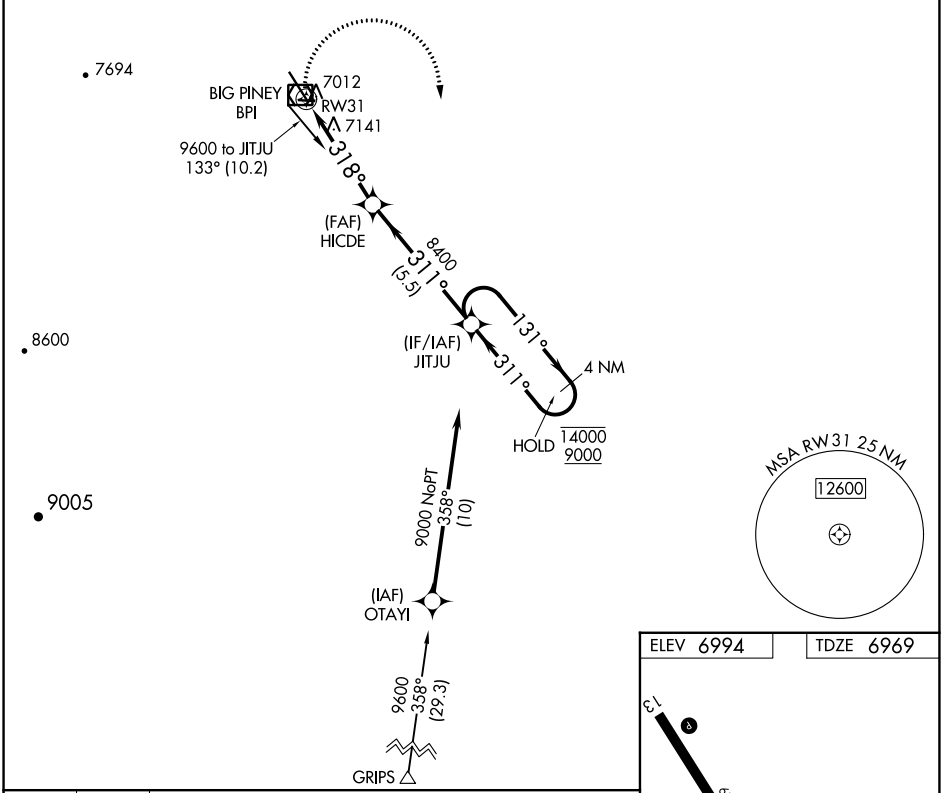


APP CRS 318°	Rwy Idg 6803
	TDZE 6969
	Apt Elev 6994

RNAV (GPS) RWY 31

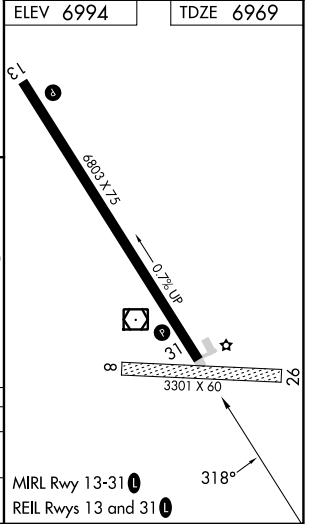
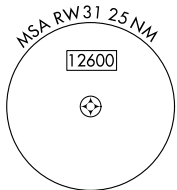
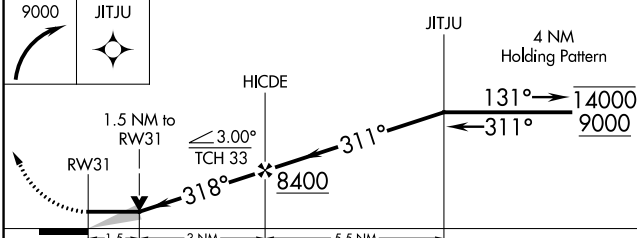
MILEY MEML FLD (BPI)

RNP APCH - GPS.		MISSED APPROACH: Climbing right turn to 9000 direct JITJU and hold.	
Circling NA to Rws 8 and 26.		ASOS 135.225	SALT LAKE CENTER 128.35 239.25
		UNICOM 122.8 (CTAF)	122.70



NW-1, 22 FEB 2024 to 21 MAR 2024

NW-1, 22 FEB 2024 to 21 MAR 2024



CATEGORY	A	B	C	D
RNAV MDA	7460-1	491 (500-1)	7460-1 $\frac{3}{8}$	491 (500-1 $\frac{3}{8}$)
CIRCLING	7460-1 466 (500-1)	7560-1 566 (600-1)	7800-2 $\frac{1}{4}$ 806 (900-2 $\frac{1}{4}$)	7820-2 $\frac{3}{4}$ 826 (900-2 $\frac{3}{4}$)