

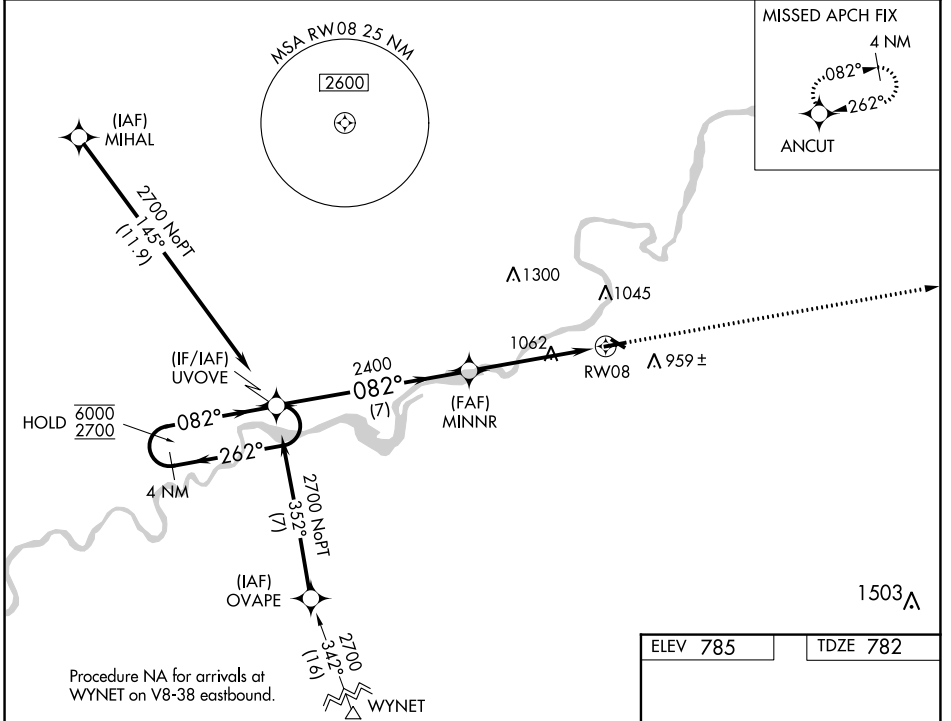
WAAS CH <b>42821</b> <b>W08A</b>	APP CRS <b>082°</b>	Rwy Idg TDZE Apt Elev	<b>3897</b> <b>782</b> <b>785</b>
--	------------------------	-----------------------------	---

# RNAV (GPS) RWY 8

DIXON MUNI-CHARLES R WALGREEN FLD (C73)

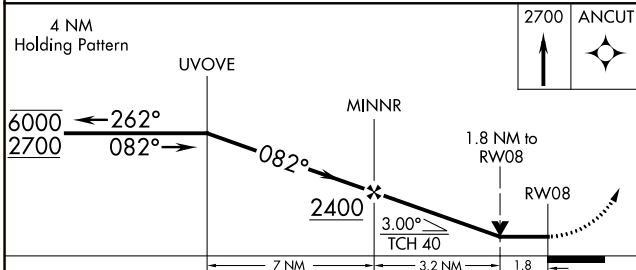
RNP APCH - GPS.	<p>▼ Rwy 8 helicopter visibility reduction below 3/4 SM NA. When local altimeter setting not received, use Rochelle altimeter setting and increase all MDAs 40 feet and Circling visibility Cat C 1/4 SM. VDP NA when using Rochelle altimeter setting.</p> <p>▲ NA</p>	MISSED APPROACH: Climb to 2700 direct ANCUT and hold.
-----------------	---	---

AWOS-AV <b>118.575</b>	ROCKFORD APP CON <b>126.0 327.0</b>	UNICOM <b>123.05 (CTAF) 0</b>
---------------------------	--	----------------------------------



EC-3, 22 FEB 2024 to 21 MAR 2024

EC-3, 22 FEB 2024 to 21 MAR 2024



ELEV 785	TDZE 782
----------	----------

REIL Rwy 8 0  
MIRL Rwy 8-26 and 12-30 0

CATEGORY	A	B	C	D
LP MDA	1380-1	598 (600-1)	1380-1 3/4 598 (600-1 3/4)	NA
LNAV MDA	1380-1	598 (600-1)	1380-1 3/4 598 (600-1 3/4)	NA
CIRCLING	1380-1 595 (600-1)	1400-1 615 (700-1)	1420-1 3/4 635 (700-1 3/4)	NA