

**TOP ALTITUDE:
8000**

- NOTE: For turbojets only.
- NOTE: DME/DME/IRU or GPS required.
- NOTE: RNAV 1.
- NOTE: RADAR required.
- NOTE: If unable to accept climb rates, advise ATC on initial contact.
- NOTE: Accelerate to 250K, if unable advise ATC. Upon reaching 10000 MSL, accelerate to and maintain 280K, if unable advise ATC.

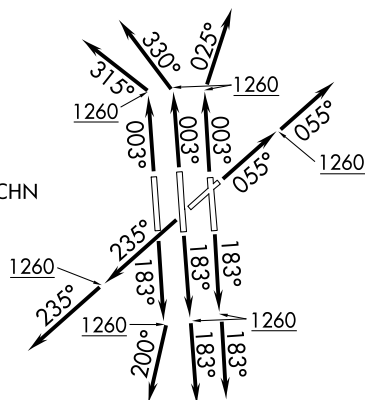
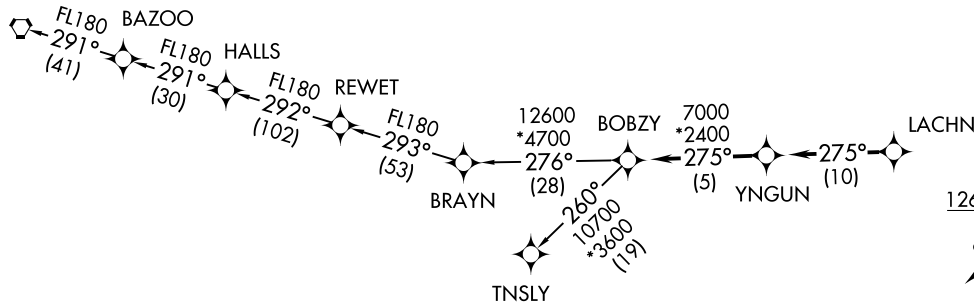


D-ATIS DEP 132.1
 CLNC DEL
 127.15 348.6
 CPDLC
 GND CON
 121.8 348.6 (WEST)
 121.9 348.6 (EAST)
 CHARLOTTE TOWER
 118.1 257.8 (Rwys 18L-36R)
 126.4 257.8 (Rwy 18C-36C)
 133.35 257.8 (Rwy 18R-36L)
 CHARLOTTE DEP CON
 120.5 257.2

TAKEOFF MINIMUMS

Rwys 18C/L/R, 23, 36C/R: Standard with minimum climb of 500' per NM to 1260.
 Rwy 5: Standard with minimum climb of 500' per NM to 1300.
 Rwy 36L: Standard with minimum climb of 500' per NM to 1400.

NASHVILLE
BNA



(NARRATIVE ON FOLLOWING PAGE)

NOTE: Chart not to scale.

BOBZY FOUR DEPARTURE (RNAV)
(BOBZY4.BOBZY) 03JAN19

CHARLOTTE, NORTH CAROLINA
CHARLOTTE/DOUGLAS INTL (CLT)

(BOBZY4.BOBZY) 23166
BOBZY FOUR DEPARTURE (RNAV)

AL-78 (FAA)

CHARLOTTE/DOUGLAS INTL (CLT)
CHARLOTTE, NORTH CAROLINA



DEPARTURE ROUTE DESCRIPTION
SEE ADDITIONAL REQUIREMENTS ON AAUP

- TAKEOFF RWY 5: Climb heading 055° to 1260, then on heading 055° or as assigned by ATC, expect RADAR vectors to LACHN, thence. . . .
- TAKEOFF RWYS 18C/L: Climb heading 183° to 1260, then on heading 183° or as assigned by ATC, expect RADAR vectors to LACHN, thence. . . .
- TAKEOFF RWY 18R: Climb heading 183° to 1260, then on heading 200° or as assigned by ATC, expect RADAR vectors to LACHN, thence. . . .
- TAKEOFF RWY 23: Climb heading 235° to 1260, then on heading 235° or as assigned by ATC, expect RADAR vectors to LACHN, thence. . . .
- TAKEOFF RWY 36C: Climb heading 003° to 1260, then on heading 330° or as assigned by ATC, expect RADAR vectors to LACHN, thence. . . .
- TAKEOFF RWY 36L: Climb heading 003° to 1260, then on heading 315° or as assigned by ATC, expect RADAR vectors to LACHN, thence. . . .
- TAKEOFF RWY 36R: Climb heading 003° to 1260, then on heading 025° or as assigned by ATC, expect RADAR vectors to LACHN, thence. . . .

. . . .on depicted route to BOBZY, then on assigned transition. Maintain 8000.
Expect clearance to filed altitude within 10 minutes after departure.

- NASHVILLE TRANSITION (BOBZY4.BNA)
- TNSLY TRANSITION (BOBZY4.TNSLY)

SE-2, 22 FEB 2024 to 21 MAR 2024

SE-2, 22 FEB 2024 to 21 MAR 2024