

RNAV (GPS) Y RWY 17R

CITY OF COLORADO SPRINGS MUNI (COS)

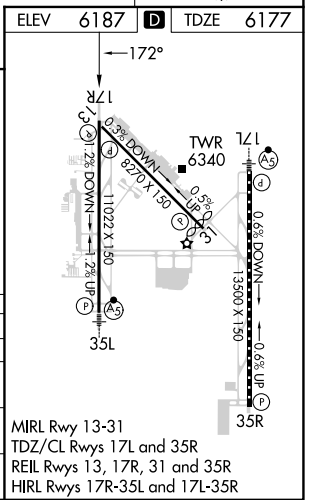
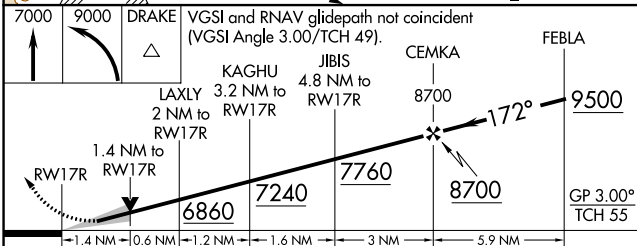
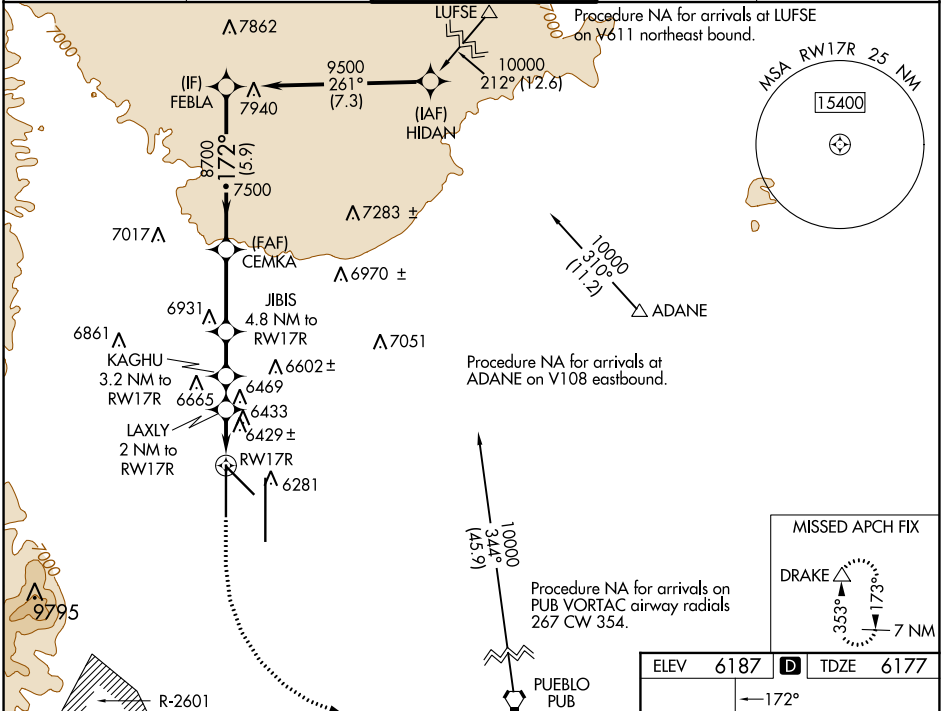
WAAS CH 72800 W17B	APP CRS 172°	Rwy ldg TDZE 6177 Apt Elev 6187	11022
--	------------------------	---	--------------

RNP APCH - GPS.

⚠ For uncompensated Baro-VNAV systems, LNAV/VNAV NA below -21°C or above 54°C.
 ⚠ Simultaneous approach authorized with ILS or LOC RWY 17L and ILS RWY 17L (SA CAT I).
 LNAV procedure NA during simultaneous operations. Use of FD or AP providing RNAV track guidance required during simultaneous operations.

MISSED APPROACH: Climb to 7000 then climbing left turn to 9000 direct DRAKE and hold.

ATIS 125.0 254.3	SPRINGS APP CON 124.0 257.875	SPRINGS TOWER 119.9 360.6	GND CON 121.7 348.6	CLNC DEL 134.45 363.125
----------------------------	---	-------------------------------------	-------------------------------	-----------------------------------



CATEGORY	A	B	C	D
LPV DA		6377/40	200 (200-¾)	
LNAV/VNAV DA		6752-2	575 (600-2)	
LNAV MDA	6680/55	503 (500-1)	6680-1¾	503 (500-1¾)
CIRCLING	6740-1 553 (600-1)	6800-1 613 (700-1)	7040-2½ 853 (900-2½)	7260-3 1073 (1100-3)

SW-1, 22 FEB 2024 to 21 MAR 2024

SW-1, 22 FEB 2024 to 21 MAR 2024