

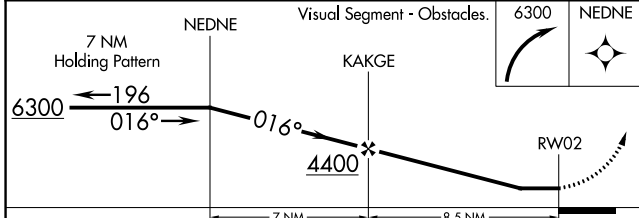
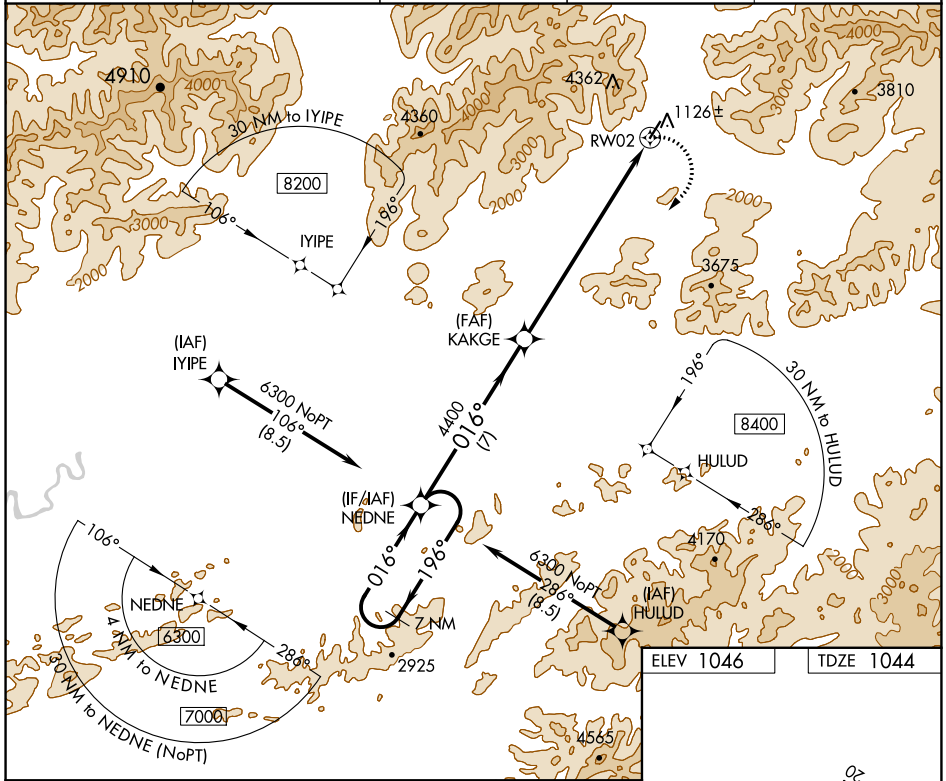
WAAS CH <b>93727</b> <b>W02A</b>	APP CRS <b>016°</b>	Rwy Idg TDZE Apt Elev	<b>4011</b> <b>1044</b> <b>1046</b>
--	------------------------	-----------------------------	---

# RNAV (GPS) RWY 2

COLDFOOT (CXF) (PACX)

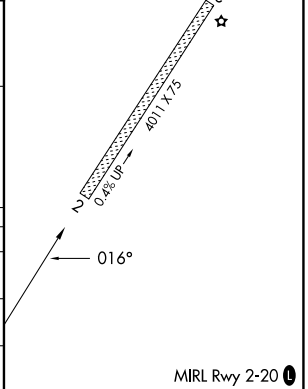
<b>W</b> Circling NA for Cats B and C west of Rwy 2-20. DME/DME RNP-0.3 NA. Rwy 2 helicopter visibility reduction below 3/4 SM NA. Use Bettles altimeter setting, when not received, procedure NA. Circling Rwy 20 NA at night.	<b>MISSED APPROACH:</b> Climbing right turn to 6300 direct NEDNE and hold.
---	---

AWOS-3PT <b>118.0</b>	BTT/PABT ASOS <b>135.45</b>	ANCHORAGE CENTER <b>124.6 352.0</b>	FAIRBANKS RADIO <b>122.0</b>	UNICOM <b>122.9</b>
--------------------------	--------------------------------	--	---------------------------------	------------------------



CATEGORY	A	B	C	D
LP MDA	4160-1¼ 3116 (3200-1¼)	4160-1½ 3116 (3200-1½)	4160-3 3116 (3200-3)	NA
LNAV MDA	4340-1¼ 3296 (3300-1¼)	4340-1½ 3296 (3300-1½)	4340-3 3296 (3300-3)	NA
<b>C</b> CIRCLING	4340-1¼ 3294 (3300-1¼)	4340-1½ 3294 (3300-1½)	4340-3 3294 (3300-3)	NA

ELEV 1046	TDZE 1044
-----------	-----------



AK, 25 JAN 2024 to 21 MAR 2024

AK, 25 JAN 2024 to 21 MAR 2024