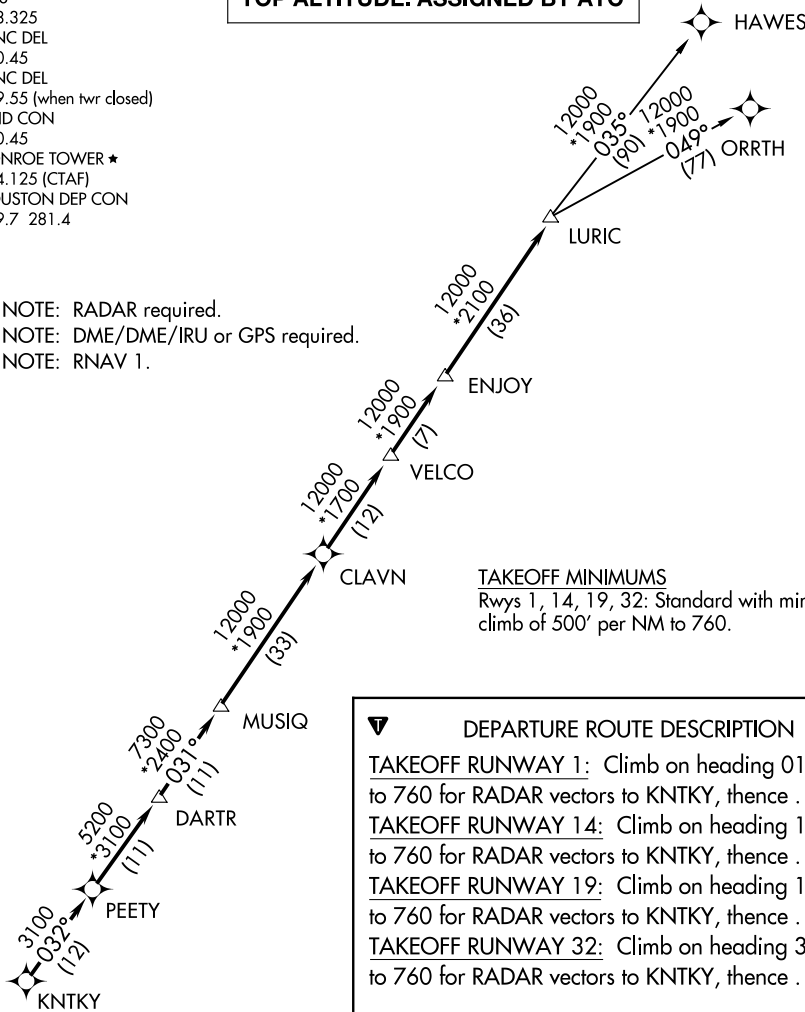


ATIS
118.325
CLNC DEL
120.45
CLNC DEL
119.55 (when twr closed)
GND CON
120.45
CONROE TOWER ★
124.125 (CTAF)
HOUSTON DEP CON
119.7 281.4

TOP ALTITUDE: ASSIGNED BY ATC

NOTE: RADAR required.
NOTE: DME/DME/IRU or GPS required.
NOTE: RNAV 1.



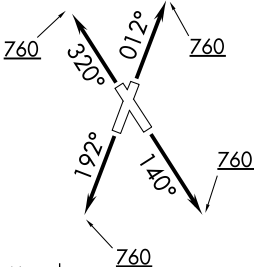
TAKEOFF MINIMUMS
Rwys 1, 14, 19, 32: Standard with minimum
climb of 500' per NM to 760.

DEPARTURE ROUTE DESCRIPTION

TAKEOFF RUNWAY 1: Climb on heading 012° to 760 for RADAR vectors to KNTKY, thence . . .
TAKEOFF RUNWAY 14: Climb on heading 140° to 760 for RADAR vectors to KNTKY, thence . . .
TAKEOFF RUNWAY 19: Climb on heading 192° to 760 for RADAR vectors to KNTKY, thence . . .
TAKEOFF RUNWAY 32: Climb on heading 320° to 760 for RADAR vectors to KNTKY, thence . . .

... on track 032° to PEETY, then on track 032° to DARTR, then on track 031° to MUSIQ, then on track 031° to CLAVN, then on track 031° to VELCO, then on track 031° to ENJOY, then on track 031° to LURIC, then on (transition). Maintain ATC assigned altitude. Expect filed altitude 10 minutes after departure.

HAWES TRANSITION (LURIC8.HAWES)
ORRTH TRANSITION (LURIC8.ORRTH)



NOTE: Chart not to scale.