

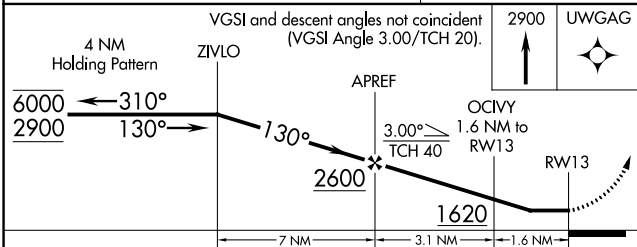
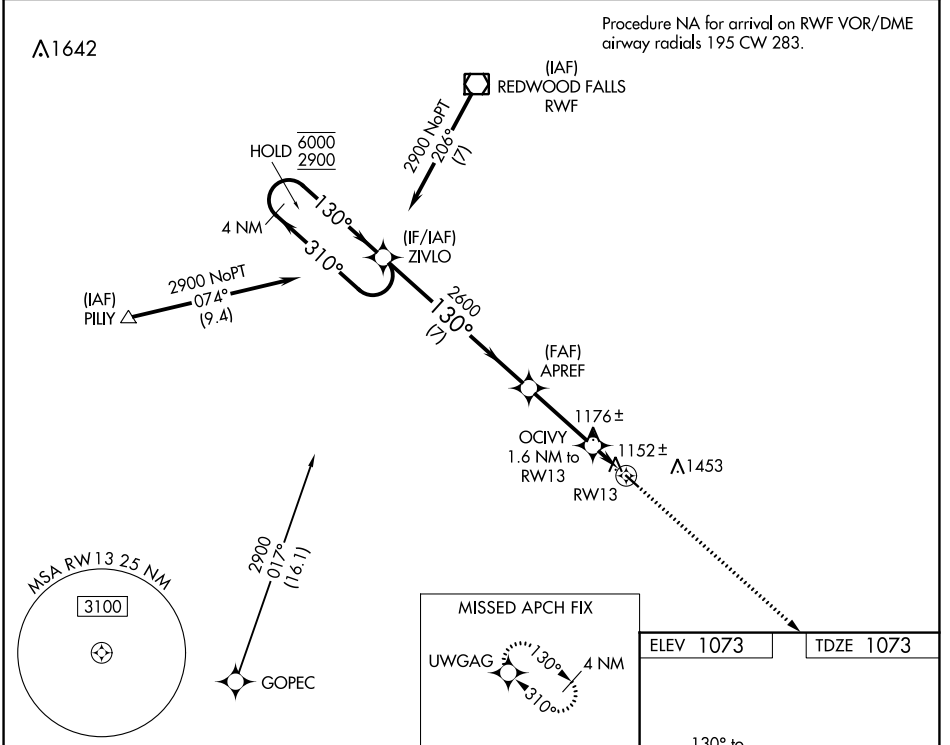
WAAS CH 86331 W13A	APP CRS 130°	Rwy Idg TDZE Apt Elev	3402 1073 1073
---------------------------------	------------------------	-----------------------------	---

RNAV (GPS) RWY 13

SPRINGFIELD MUNI (D42)

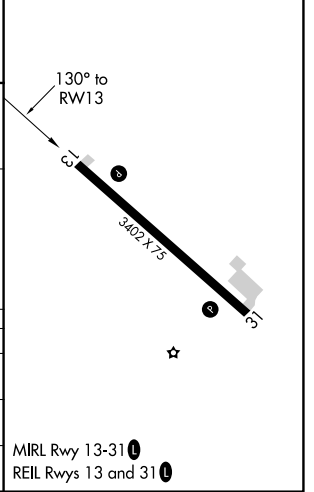
RNP APCH.	MISSED APPROACH: Climb to 2900 direct UWGAG and hold.
<p>▼ Rwy 13 helicopter visibility reduction below ¾ SM NA.</p> <p>▲ NA Use Redwood Falls altimeter setting.</p>	

RWF ASOS 126.575	MINNEAPOLIS CENTER 127.1 290.2	UNICOM 122.8 (CTAF) 0
----------------------------	--	---------------------------------



ELEV 1073	TDZE 1073
-----------	-----------

CATEGORY	A	B	C	D
LP MDA	1500-1	427 (500-1)	1500-1¼ 427 (500-1¼)	NA
LNAV MDA	1520-1	447 (500-1)	1520-1⅜ 447 (500-1⅜)	NA
CIRCLING	1660-1 587 (600-1)	1820-1 747 (800-1)	1820-2¼ 747 (800-2¼)	NA



NC-1, 22 FEB 2024 to 21 MAR 2024

NC-1, 22 FEB 2024 to 21 MAR 2024

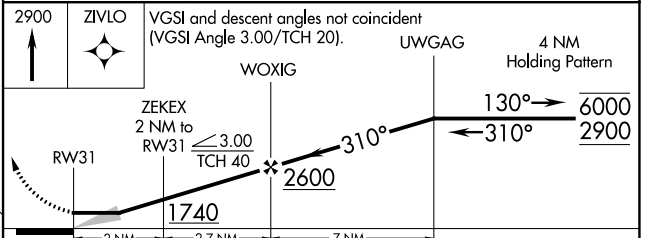
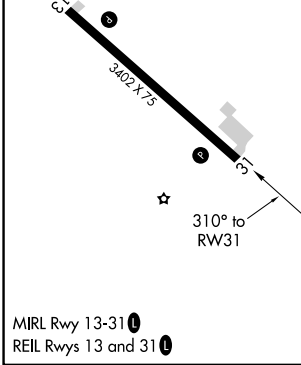
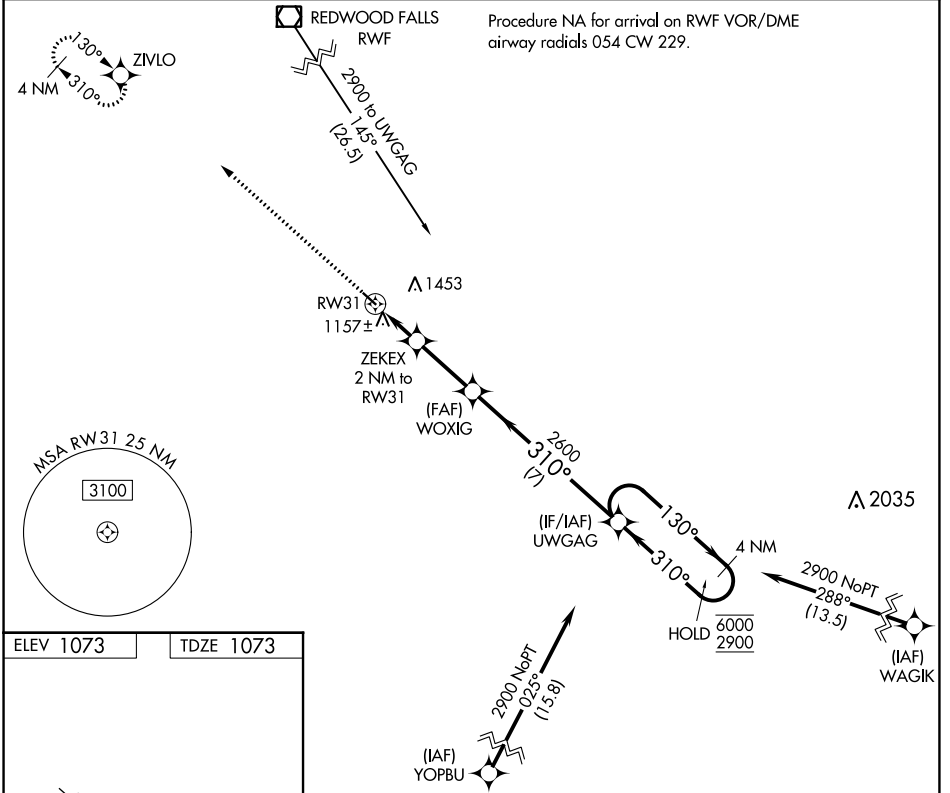
APP CRS	Rwy Idg	3402
310°	TDZE	1073
	Apt Elev	1073

RNAV (GPS) RWY 31

SPRINGFIELD MUNI (D42)

RNP APCH.	MISSED APPROACH: Climb to 2900 direct ZIVLO and hold.
NA Use Redwood Falls altimeter setting.	

RWF ASOS 126.575	MINNEAPOLIS CENTER 127.1 290.2	UNICOM 122.8 (CTAF) 0
----------------------------	--	---------------------------------



CATEGORY	A	B	C	D
LNAV MDA	1500-1	427 (500-1)	1500-1¼ 427 (500-1¼)	NA
CIRCLING	1660-1 587 (600-1)	1820-1 747 (800-1)	1820-2¼ 747 (800-2¼)	NA

NC-1, 22 FEB 2024 to 21 MAR 2024

NC-1, 22 FEB 2024 to 21 MAR 2024

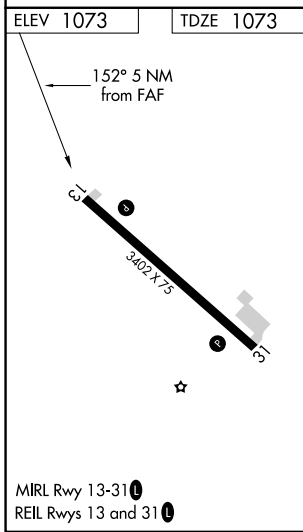
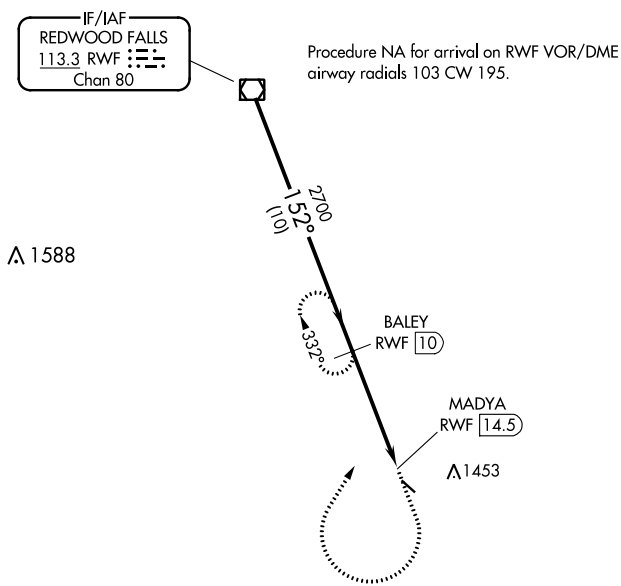
VOR/DME RWF 113.3 Chan 80	APP CRS 152°	Rwy Idg 3402 TDZE 1073 Apt Elev 1073
---	------------------------	---

VOR RWY 13

SPRINGFIELD MUNI (D42)

DME required.	MISSED APPROACH: Climb to 2000 then climbing right turn to 2700 on heading 030° and RWF R-152 to BALEY/10 DME and hold.
<p>Procedure NA at night. Rwy 13 helicopter visibility reduction below 1 SM NA. Use Redwood Falls altimeter setting.</p>	

RWF ASOS 126.575	MINNEAPOLIS CENTER 127.1 290.2	UNICOM 122.8 (CTAF)
----------------------------	--	-------------------------------



VGSI and descent angles not coincident (VGSI Angle 3.00/TCH 20).		2000	2700	RWF R-152	BALEY RWF 10
		↑	hdg 030°		
CATEGORY	A	B	C	D	
S-13	1620-1	547 (600-1)	1620-1 3/4 547 (600-1 3/4)	NA	
CIRCLING	1660-1 587 (600-1)	1820-1 747 (800-1)	1820-2 1/4 747 (800-2 1/4)	NA	

NC-1, 22 FEB 2024 to 21 MAR 2024

NC-1, 22 FEB 2024 to 21 MAR 2024