

ILS or LOC RWY 17C

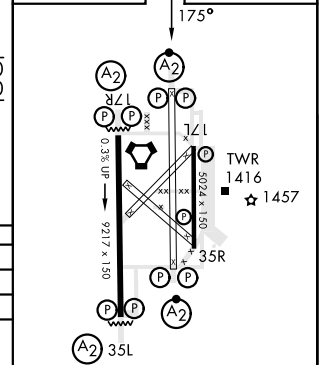
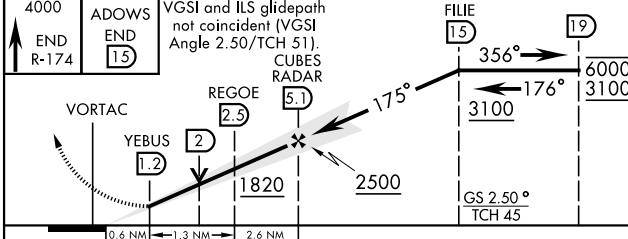
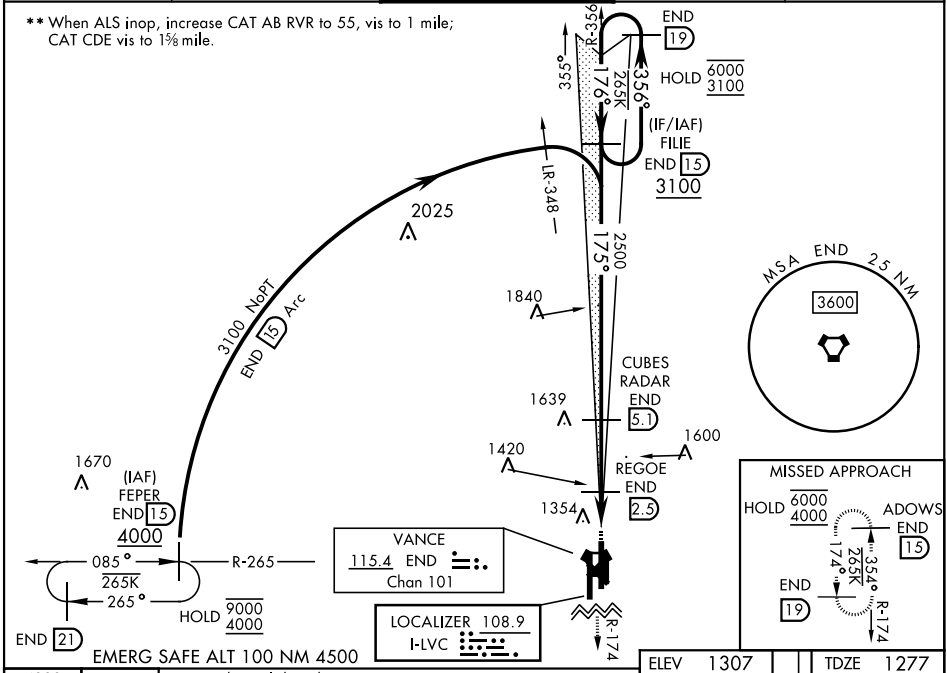
LOC I-LVC 108.9	APCH CRS 175°	Rwy Idg 9217
		TDZE 1277
		Arprt Elev 1307

AL-135 [USAF]

VANCE AFB (KEND)

RADAR or DME required.	SALSF (A2)	MISSED APPROACH: Climb to 4000, intercept END VORTAC R-174 to ADOWS and hold.
------------------------	----------------------	---

ATIS ★ 115.4 263.15	APP CON 125.45 388.2 EAST 126.75 346.325 WEST	TOWER ★ 124.05 259.1	GND CON 121.675 289.4	CLNC DEL 225.4
-------------------------------	---	--------------------------------	---------------------------------	--------------------------



CATEGORY	A	B	C	D	E
S-ILS 17C	1477/40		200	(200-¾)	
S-LOC 17C *	1680/40 403 (400-¾)		1680/50 403 (400-1)		
CIRCLING	1760-1 453 (500-1)		1800-1½ 493 (500-1½)	1900-2 593 (600-2)	2300-3 993 (1000-3)
	WITHOUT REGOE FIX				
S-LOC 17C **	1820/40 543 (600-¾)		1820-1½ 543 (600-1½)		
CIRCLING	1820-1 513 (600-1)		1820-1½ 513 (600-1½)	1900-2 593 (600-2)	2300-3 993 (1000-3)

HIRL Rwy 17C-35C, 17R-35L
MIRL Rwy 17L-35R
REIL Rwy 17L-35R

FAF to MAP 3.9 NM

Knots	60	90	120	150	180
Min:Sec	3:54	2:36	1:57	1:34	1:18

ILS or LOC RWY 17C

SC-1, 22 FEB 2024 to 21 MAR 2024

SC-1, 22 FEB 2024 to 21 MAR 2024