

ENID, OKLAHOMA

VOR/DME RWY 17L

VORTAC END 115.4 Chan 101	APCH CRS 196°	Rwy Idg TDZE 1282 Arpt Elev 1307
---	-------------------------	--

AL-135 [USAF]

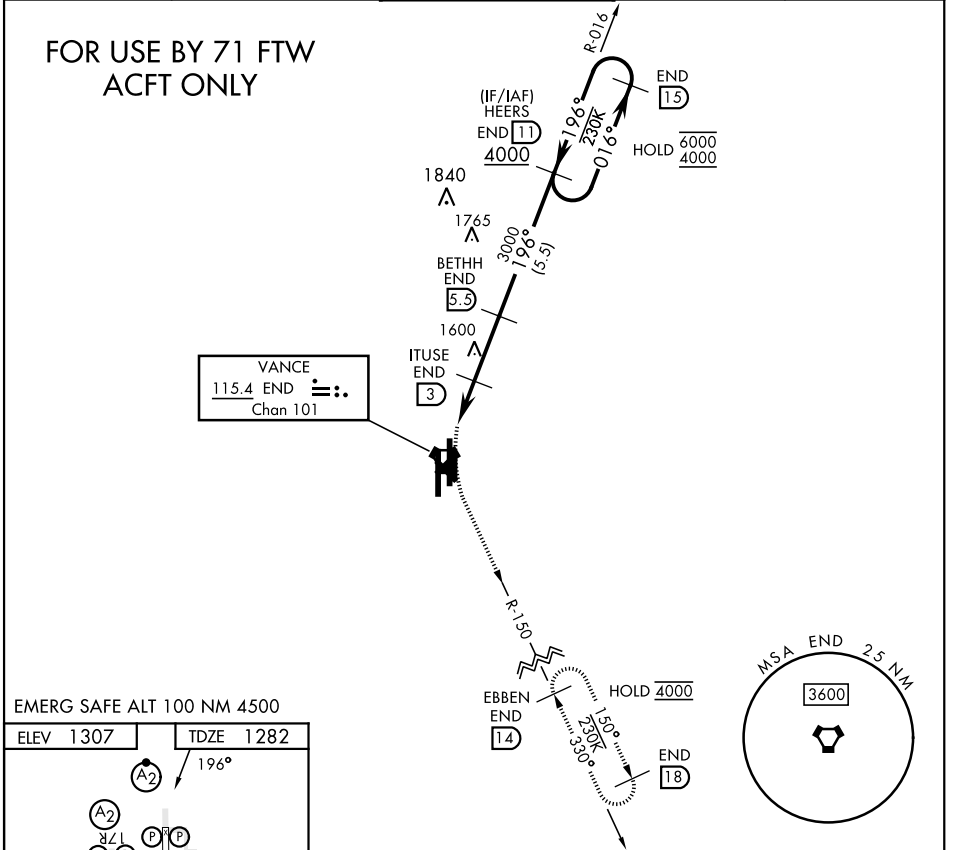
VANCE AFB (KEND)

▽ MISSED APPROACH: Climbing left turn to 4000 on heading 165°, intercept END VORTAC R-150 to EBBEN and hold.

ATIS ★ 115.4 263.15	APP CON 125.45 388.2 EAST 126.75 346.325 WEST	TOWER ★ 124.05 259.1	GND CON 121.675 289.4	CLNC DEL 225.4
-------------------------------	---	--------------------------------	---------------------------------	--------------------------

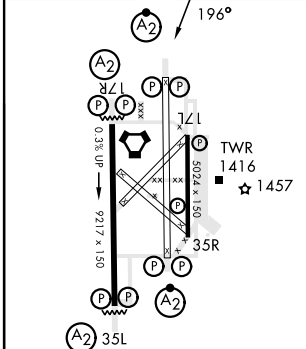
FOR USE BY 71 FTW ACFT ONLY

VANCE
115.4 END
Chan 101



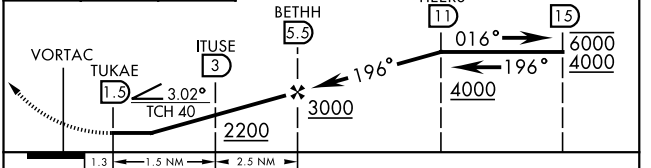
EMERG SAFE ALT 100 NM 4500

ELEV 1307	TDZE 1282
-----------	-----------



HIRL Rwy 17C-35C, 17R-35L
MIRL Rwy 17L-35R
REIL Rwy 17L-35R

4000 hdg 165°	↑ END R-150	EBBEN END 14	VGSI and descent angles not coincident (VGSI Angle 3.00/TCH 54).
---------------------	-------------------	--------------------	---



CATEGORY	A	B	C	D
S-17L	1720-1½	438 (500-1½)		NA
C CIRCLING	1760-1½	453 (500-1½)		NA

ENID, OKLAHOMA

36°20'N-97°55'W

VANCE AFB (KEND)

Orig 24MAR22

VOR/DME RWY 17L

SC-1, 22 FEB 2024 to 21 MAR 2024

SC-1, 22 FEB 2024 to 21 MAR 2024