


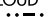
(RST1.RST) 23334

# ROCHESTER ONE DEPARTURE

AL-5094 (FAA)


FLYING CLOUD (FCM)  
MINNEAPOLIS, MINNESOTA




FLYING CLOUD  
117.7 FCM   
Chan 124

**TOP ALTITUDE:  
(JETS) 7000/  
(PROPS) 5000**

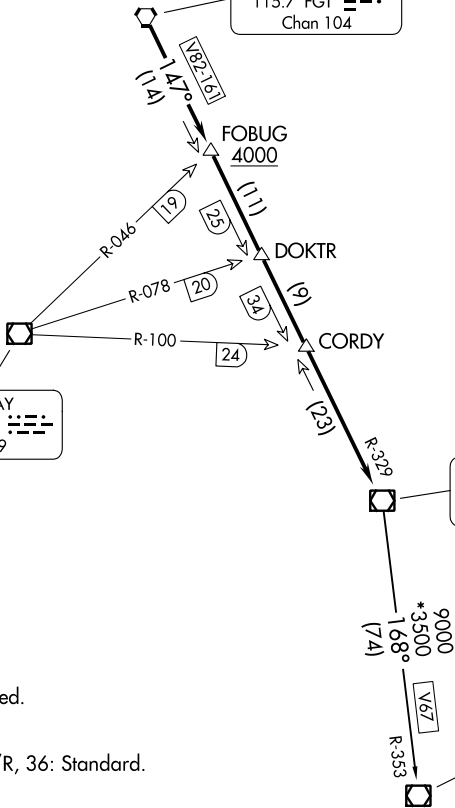
MINNEAPOLIS DEP CON  
134.7 284.7  
ATIS  
124.9  
MINNEAPOLIS CLNC DEL  
121.7 (when tower closed)  
FLYING CLOUD TOWER ★  
119.15

FARMINGTON  
115.7 FGT   
Chan 104

HALFWAY  
111.2 FOW   
Chan 49

ROCHESTER  
112.0 RST   
Chan 57

WATERLOO  
112.2 ALO   
Chan 59



NC-1, 22 FEB 2024 to 21 MAR 2024

NC-1, 22 FEB 2024 to 21 MAR 2024

NOTE: RADAR required.

### TAKEOFF MINIMUMS

Rwys 10L/R, 18, 28L/R, 36: Standard.

NOTE: Chart not to scale.



### DEPARTURE ROUTE DESCRIPTION

TAKEOFF ALL RUNWAYS: Fly assigned heading and altitude for RADAR vectors to FGT VORTAC then on FGT R-147 and RST R-329 to RST VOR/DME. Cross FOBUG INT/FGT 14 DME at or above 4000, thence . . . .

. . . .on assigned transition or assigned route. Expect clearance to filed altitude/flight level 10 (ten) minutes after departure.

WATERLOO TRANSITION (RST1.ALO): From over RST VOR/DME on RST R-168 and ALO R-353 to ALO VOR/DME.

# ROCHESTER ONE DEPARTURE

(RST1.RST) 13SEP18

MINNEAPOLIS, MINNESOTA  
FLYING CLOUD (FCM)