

(RACER8.MCI) 23278

RACER EIGHT DEPARTURE

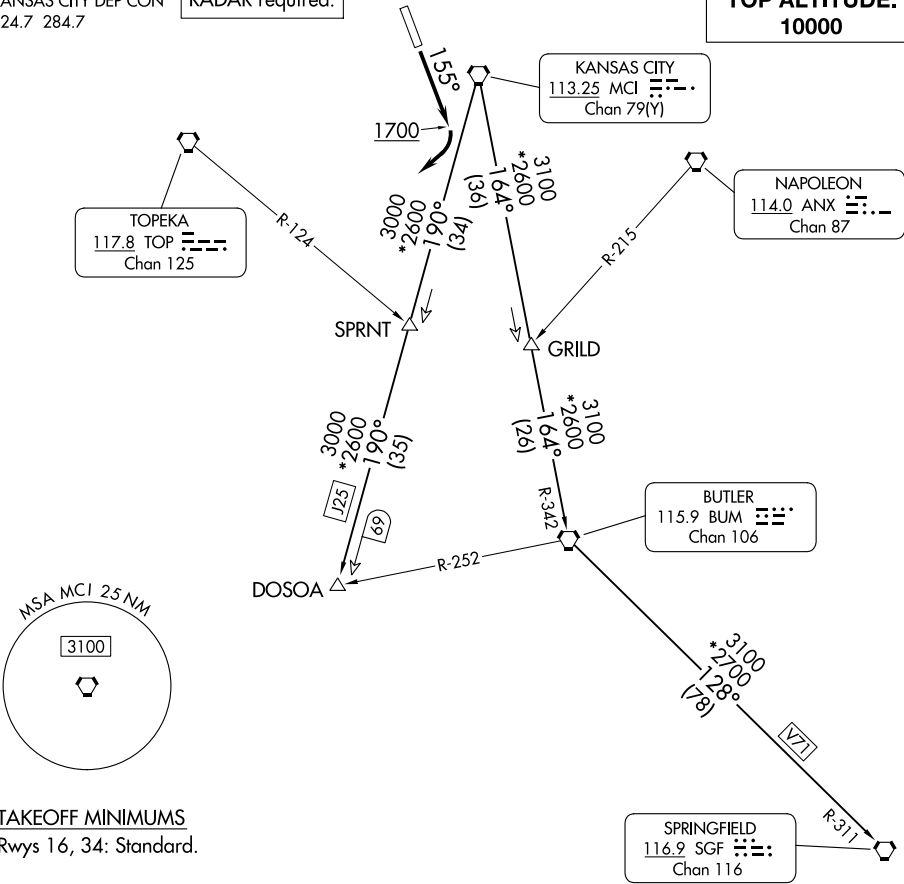
AL-152 (FAA)

SHERMAN AAF (F'L.V)
FORT LEAVENWORTH, KANSAS

KANSAS CITY DEP CON
124.7 284.7

RADAR required.

TOP ALTITUDE:
10000



TAKEOFF MINIMUMS
Rwys 16, 34: Standard.

NOTE: Chart not to scale.



DEPARTURE ROUTE DESCRIPTION

TAKEOFF RUNWAY 16: Climb on heading 155° to 1700 before turning southwest, thence. . . .climb on assigned heading for RADAR vectors to appropriate route. Maintain 10000 or as assigned by ATC, expect filed altitude 10 minutes after departure.

TAKEOFF RUNWAY 34: Climb on assigned heading for RADAR vectors to appropriate route. Maintain 10000 or as assigned by ATC, expect filed altitude 10 minutes after departure.

BUTLER TRANSITION (RACER8.BUM): From over MCI VORTAC on MCI R-164 and BUM R-342 to BUM VORTAC.

DOSOA TRANSITION (RACER8.DOSOA): From over MCI VORTAC on MCI R-190 to DOSOA.

SPRINGFIELD TRANSITION (RACER8.SGF): From over MCI VORTAC on MCI R-164 and BUM R-342 to BUM VORTAC, then on BUM R-128 and SGF R-311 to SGF VORTAC.

RACER EIGHT DEPARTURE

(RACER8.MCI) 05OCT23

FORT LEAVENWORTH, KANSAS
SHERMAN AAF (F'L.V)

NC-2, 22 FEB 2024 to 21 MAR 2024

NC-2, 22 FEB 2024 to 21 MAR 2024