

VOR/DME GFK 114.3 Chan 90	APP CRS 344°	Rwy Idg TDZE 845 Apt Elev 845	7351
---	------------------------	---	-------------

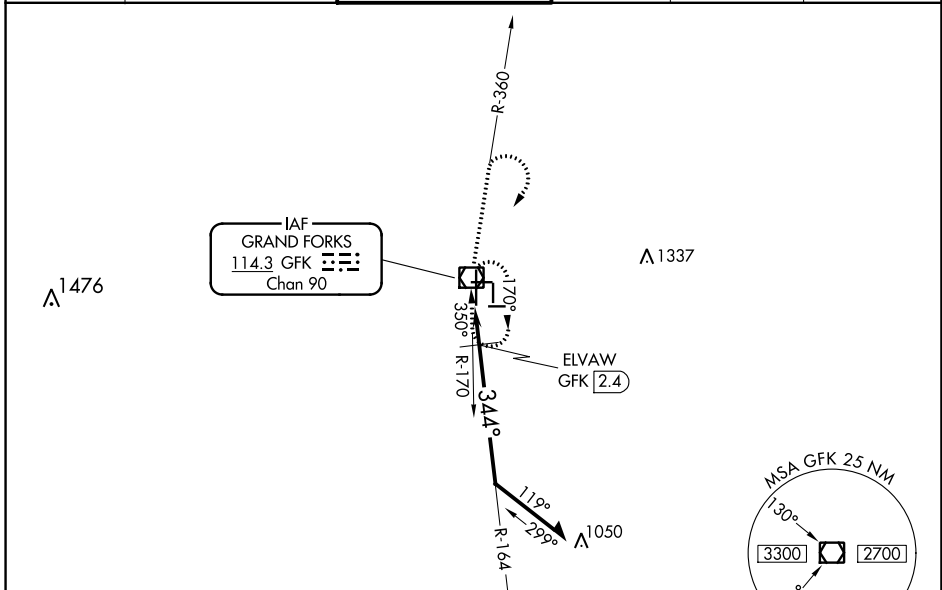
VOR RWY 35L

GRAND FORKS INTL (GFK)

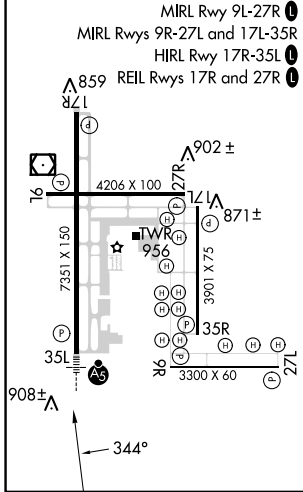
When local altimeter setting not received, use Crookston altimeter setting and increase all MDA 80 feet; increase Cat C/D visibility to 1½ SM and Circling Cat C visibility ¼ SM. Increase ELVAW fix minimums Cat C/D visibility to RVR 4500 and Circling Cat C visibility ¼ SM. For inop ALS, increase S-35L Cat C/D visibility to 1¾ SM. ELVAW fix minimums: For inop ALS, increase S-35L Cat C/D visibility to RVR 5500.

MALSR
MISSED APPROACH: Climb to 1300 then climb to 3600 on GFK R-360 then right turn direct GFK VOR/DME and hold.

ATIS 119.4	GRAND FORKS APP CON * 118.1 318.1	GRAND FORKS TOWER* 118.4 (CTAF) 350.35	GND CON 124.575	CLNC DEL 135.725	UNICOM 122.95
----------------------	---	--	---------------------------	----------------------------	-------------------------



ELEV 845	D	TDZE 845
-----------------	----------	-----------------



1300	3600	GFK	GFK VOR/DME	Remain within 10 NM
↑	↑	↻	☐	
GFK R-360				
VGSI and descent angles not coincident (VGSI Angle 2.76/TCH 61).				
*1440 when using Crookston altimeter setting.				
		164°	ELVAW GFK 2.4	2500
		344°	3.01° TCH 55	1360*
		1 NM	1.4 NM	

CATEGORY	A	B	C	D
S-35L	1360/24	515 (600-½)	1360/55	515 (600-1)
C CIRCLING	1360-1	515 (600-1)	1400-1½	1400-2
ELVAW FIX MINIMUMS				
S-35L	1220/24	375 (400-½)	1220/40	375 (400-¾)
C CIRCLING	1260-1	1300-1	1400-1½	1400-2
	415 (500-1)	455 (500-1)	555 (600-1½)	555 (600-2)

NC-1, 22 FEB 2024 to 21 MAR 2024

NC-1, 22 FEB 2024 to 21 MAR 2024