

(SIEBE4.SIEBE) 23334

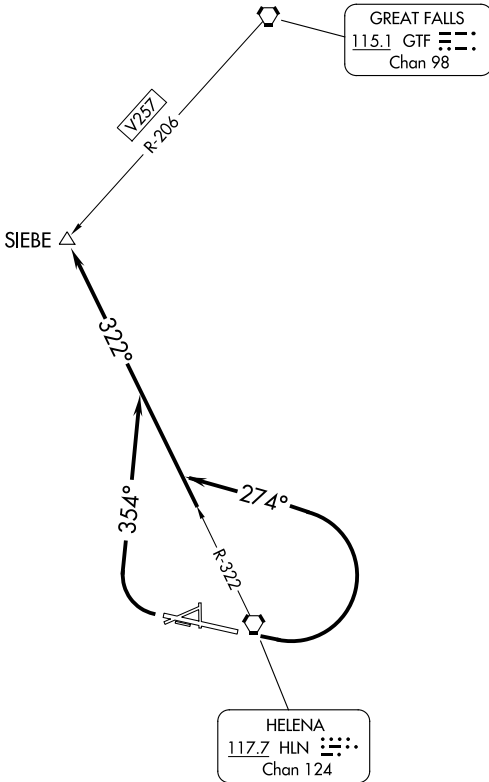
# SIEBE FOUR DEPARTURE

AL-192 (FAA)

HELENA RGNL (HLN)  
HELENA, MONTANA

HELENA DEP CON ★  
119.5 229.4  
SALT LAKE CENTER  
133.4 285.4  
ATIS  
120.4  
GND CON  
121.9  
HELENA TOWER ★  
118.3 257.8

**TOP ALTITUDE:  
ASSIGNED BY ATC**



### TAKEOFF MINIMUMS

Rwy 5: NA - ATC.  
Rwys 10, 17, 23, 28, 35: NA - Environmental.  
Rwy 9: Standard with minimum climb of 270' per NM to 9000.  
Rwy 27: Standard with minimum climb of 390' per NM to 7200.

NOTE: Chart not to scale.

### DEPARTURE ROUTE DESCRIPTION

TAKEOFF RUNWAY 9: Climbing left turn to heading 274°, thence. . . .

TAKEOFF RUNWAY 27: Climbing right turn to heading 354°, thence. . . .

. . . . intercept HLN R-322 to SIEBE INT. Maintain ATC assigned altitude.

# SIEBE FOUR DEPARTURE

(SIEBE4.SIEBE) 23FEB23

HELENA, MONTANA  
HELENA RGNL (HLN)

NW-1, 22 FEB 2024 to 21 MAR 2024

NW-1, 22 FEB 2024 to 21 MAR 2024