

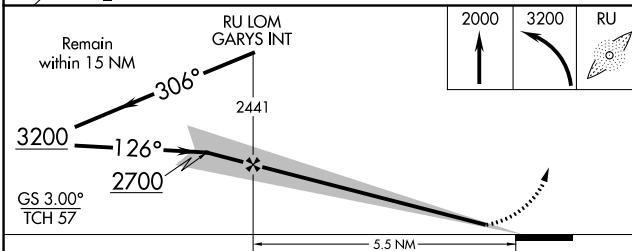
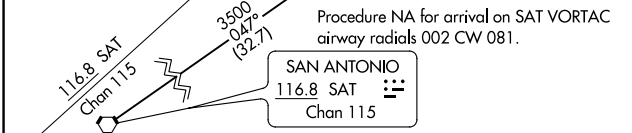
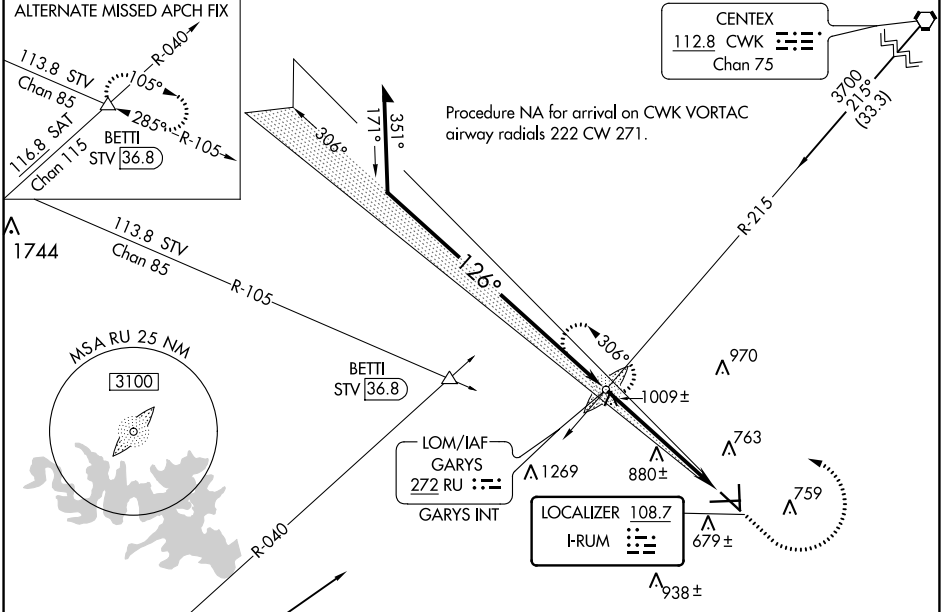
LOC I-RUM 108.7	APP CRS 126°	Rwy Idg TDZE Apt Elev	5601 593 595
---------------------------	------------------------	-----------------------------	---

ILS or LOC RWY 13

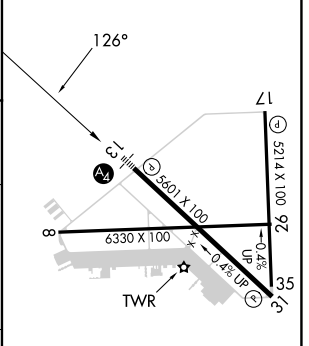
SAN MARCOS RGNL (HYI)

ADF required.	MALS 	MISSED APPROACH: Climb to 2000 then climbing left turn to 3200 direct GARYS LOM/INT and hold.
Circling NA for Cat E southwest of Rwy 13-31. Inop table does not apply to S-ILS 13 all Cats. For inop ALS, increase S-LOC 13 Cat C/D/E visibility to 1/8 SM.		

ATIS ★ 120.825	AUSTIN APP CON 119.0 370.85	SAN MARCOS TOWER ★ 126.825 (CTAF)	GND CON 120.125	CLNC DEL 120.125	CLNC DEL 121.35 (when twr closed)
--------------------------	---------------------------------------	---	---------------------------	----------------------------	--



ELEV 595	TDZE 593
----------	----------



CATEGORY	A	B	C	D	E
S-ILS-13		793-3/4	200 (200-3/4)		
S-LOC-13	1260-3/4	667 (700-3/4)	1260-13/4	667 (700-13/4)	
CIRCLING	1260-1	665 (700-1)	1260-17/8	1320-21/4	1340-23/4
			665 (700-17/8)	725 (800-21/4)	745 (800-23/4)

MIRL Rwy 8-26, 13-31, and 17-35	FAF to MAP 5.5 NM				
Knots	60	90	120	150	180
Min:Sec	5:30	3:40	2:45	2:12	1:50

SC-3, 22 FEB 2024 to 21 MAR 2024

SC-3, 22 FEB 2024 to 21 MAR 2024