

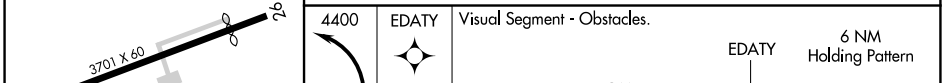
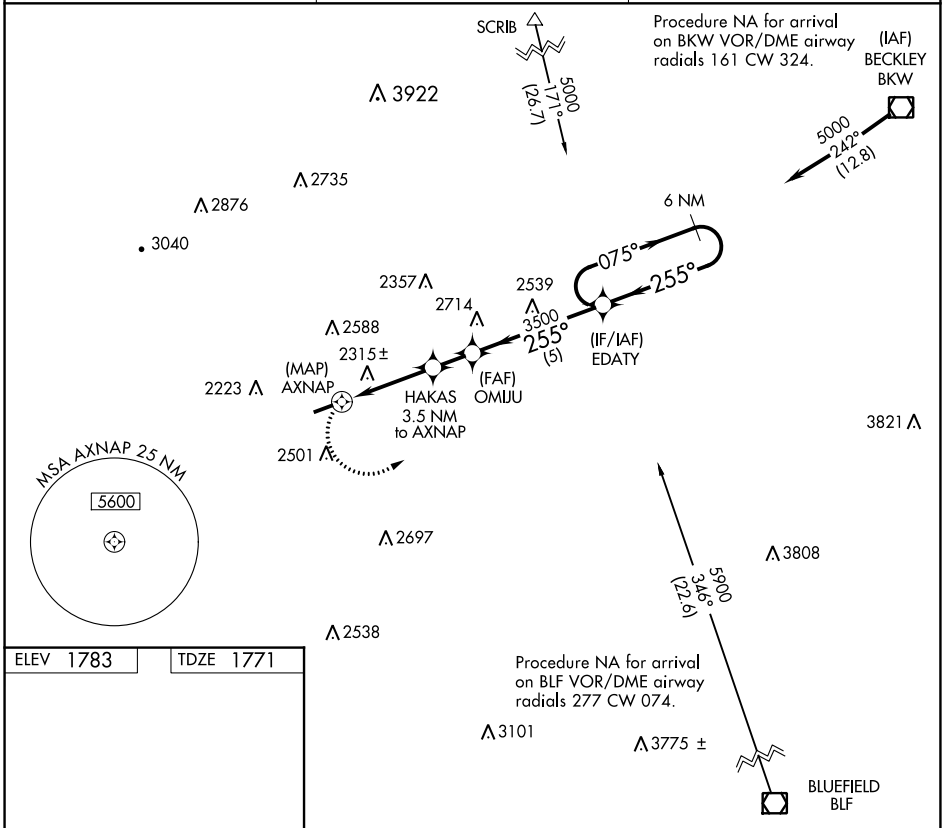
APP CRS	Rwy Idg	3111
255°	TDZE	1771
	Apt Elev	1783

RNAV (GPS) RWY 26

KEE FLD (I16)

RNP APCH - GPS.	MISSED APPROACH: Climbing left turn to 4400 direct EDATY and hold.
<p>▼ Rwy 26 helicopter visibility reduction below 1 SM NA.</p> <p>▲ NA Procedure NA at night.</p>	

AWOS-3 120.625	CHARLESTON APP CON 125.4 269.125	UNICOM 122.8 (CTAF)
--------------------------	--	-------------------------------



	<p>4400 EDATY Visual Segment - Obstacles.</p>	<p>6 NM Holding Pattern</p>
<p>AXNAP</p> <p>HAKAS 3.5 NM to AXNAP</p> <p>OMIJU</p> <p>3000</p> <p>3500</p> <p>255°</p> <p>075°</p> <p>255°</p> <p>4400</p>		
<p>0.5</p> <p>3.5 NM</p> <p>1.5 NM</p> <p>5 NM</p>		

MIRL Rwy 8-26	REIL Rwy 8 and 26			
CATEGORY	A	B	C	D
RNAV MDA	2580-1 809 (800-1)	2580-1¼ 809 (800-1¼)	2580-2½ 809 (800-2½)	NA

RNAV (GPS) RWY 26

KEE FLD (I16)

NE-4, 22 FEB 2024 to 21 MAR 2024

NE-4, 22 FEB 2024 to 21 MAR 2024

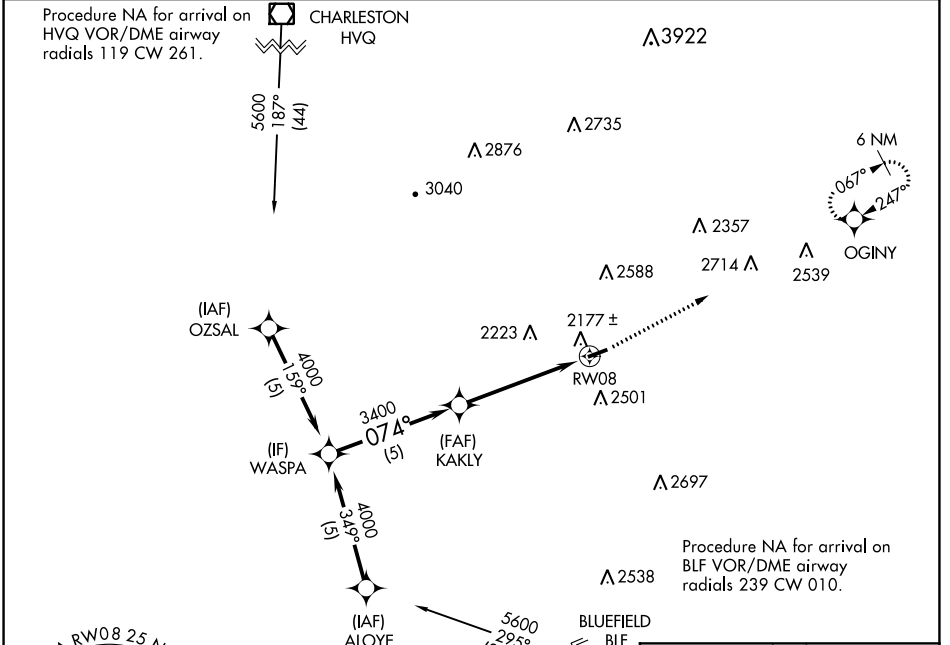
APP CRS	Rwy Idg	3701
074°	TDZE	1770
	Apt Elev	1783

RNAV (GPS) RWY 8

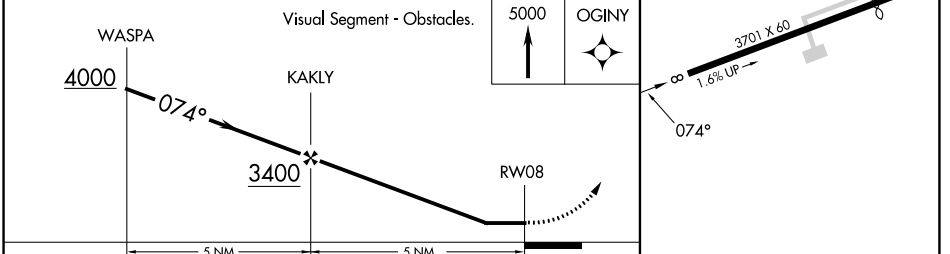
KEE FLD (I16)

RNP APCH - GPS.	MISSED APPROACH: Climb to 5000 direct OGINY and hold.
<p>▼ Rwy 8 helicopter visibility reduction below 1 SM NA.</p> <p>▲ NA Procedure NA at night.</p>	

AWOS-3 120.625	CHARLESTON APP CON 125.4 269.125	UNICOM 122.8 (CTAF) 0
--------------------------	--	---------------------------------



ELEV 1783	TDZE 1770
-----------	-----------



CATEGORY	A	B	C	D	MIRL Rwy 8-26 0	REIL Rwy 8 and 26 0
LNNAV MDA	2460-1	690 (700-1)	2460-2	690 (700-2)	NA	

NE-4, 22 FEB 2024 to 21 MAR 2024

NE-4, 22 FEB 2024 to 21 MAR 2024