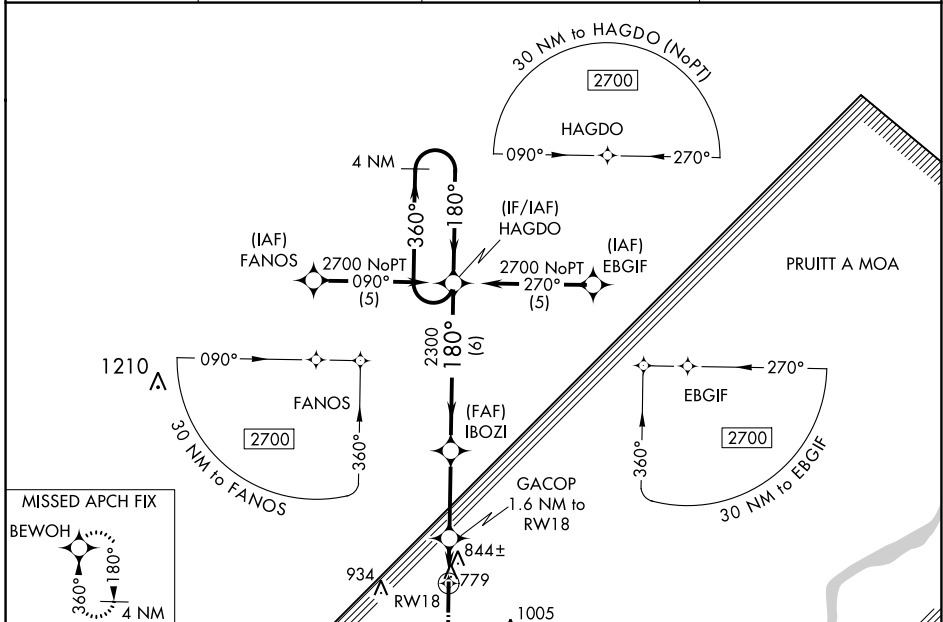


WAAS CH <b>45912</b> <b>W18A</b>	APP CRS <b>180°</b>	Rwy Idg TDZE Apt Elev	<b>5905</b> <b>734</b> <b>734</b>
--	------------------------	-----------------------------	---

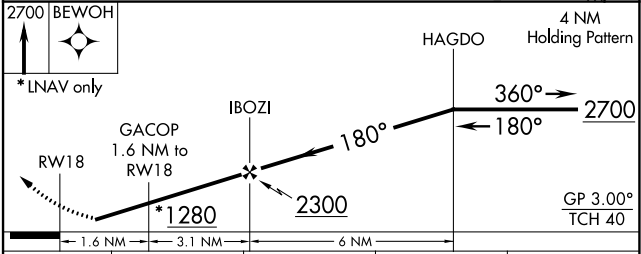
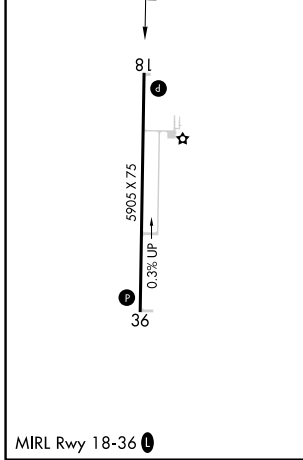
# RNAV (GPS) RWY 18

MOUNT STERLING MUNI (I63)

RNP APCH.		<p><b>Baro-VNAV NA.</b> Rwy 18 helicopter visibility reduction below <math>\frac{3}{4}</math> SM NA. When local altimeter setting not received, use Quincy altimeter setting: increase Circling Cat C and D MDA 60 feet and visibility Circling Cat C and D <math>\frac{1}{4}</math> SM.</p>		<p><b>MISSED APPROACH:</b> Climb to 2700 direct BEWOH and hold.</p>	
AWOS-3PT <b>118.325</b>	UN ASOS <b>121.425</b>	KANSAS CITY CENTER <b>126.225 317.775</b>		UNICOM <b>122.8 (CTAF) 0</b>	



ELEV <b>734</b>	TDZE <b>734</b>
-----------------	-----------------



CATEGORY	A	B	C	D
LPV DA		1066-1 $\frac{1}{4}$	332 (400-1 $\frac{1}{4}$ )	
LNAV/VNAV DA		1191-1 $\frac{3}{4}$	457 (500-1 $\frac{3}{4}$ )	
LNAV MDA	1160-1	426 (500-1)	1160-1 $\frac{1}{4}$	426 (500-1 $\frac{1}{4}$ )
CIRCLING	1200-1	466 (500-1)	1360-1 $\frac{3}{4}$ 626 (700-1 $\frac{3}{4}$ )	1360-2 626 (700-2)

EC-3, 22 FEB 2024 to 21 MAR 2024

EC-3, 22 FEB 2024 to 21 MAR 2024