

WAAS CH <b>78419</b> <b>W20A</b>	APP CRS <b>202°</b>	Rwy Idg TDZE <b>1068</b> Apt Elev <b>1068</b>
--	------------------------	---

# RNAV (GPS) RWY 20

GRIMES FLD (I74)

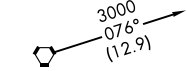
RNP APCH.

**⚠** Baro-VNAV NA when using Springfield altimeter setting. For uncompensated Baro-VNAV systems, LNAV/VNAV NA below -17°C (2°F) or above 54°C (130°F). Rwy 20 helicopter visibility reduction below 3/4 SM NA. When local altimeter setting not received, use Springfield altimeter setting and increase all DAs 44 feet, all MDAs 60 feet, increase LPV all Cats and LNAV Cat C visibility 1/4 SM, and increase Circling Cat C visibility 1/4 SM. VDP NA with Springfield altimeter setting. Circling NA to Rwy's 1 and 19.

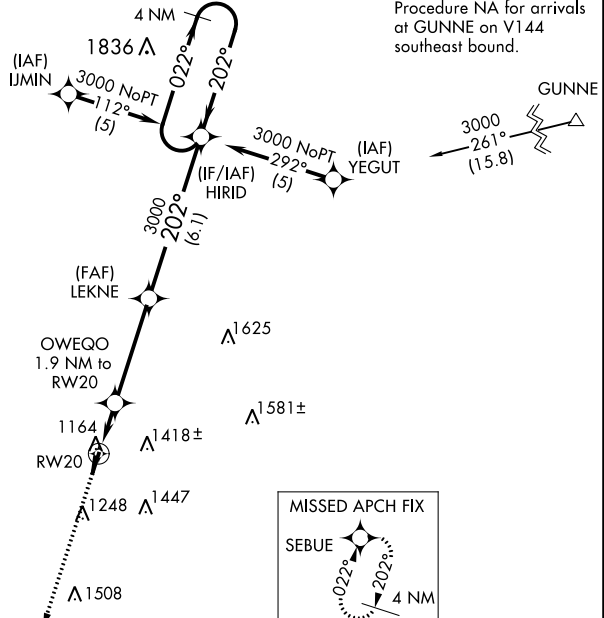
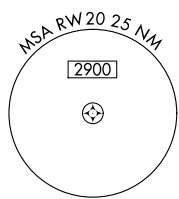
**MISSED APPROACH:**  
Climb to 4000 direct SEBUE and hold.

AWOS-3 <b>118.325</b>	COLUMBUS APP CON <b>118.425 294.5</b>	UNICOM <b>122.7 (CTAF) 0</b>
--------------------------	--	---------------------------------

Procedure NA for arrivals on ROD VORTAC airway radials 023 CW 055.



ROSEWOOD ROD

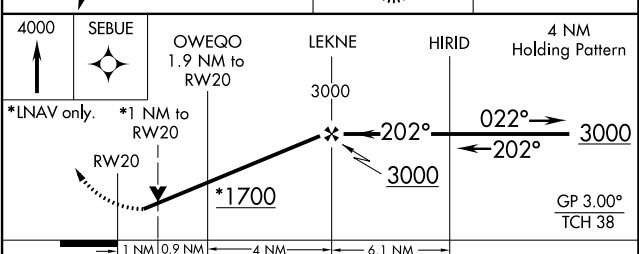
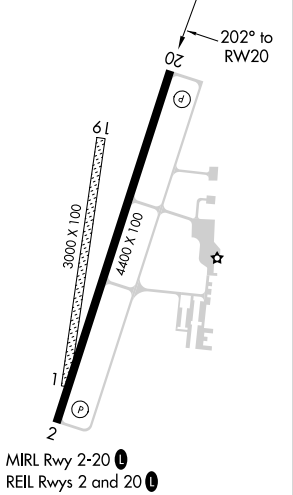


Procedure NA for arrivals at GUNNE on V144 southeast bound.

EC-2, 22 FEB 2024 to 21 MAR 2024

EC-2, 22 FEB 2024 to 21 MAR 2024

ELEV 1068	TDZE 1068
-----------	-----------



CATEGORY	A	B	C	D
LPV DA	1347-1	279 (300-1)		NA
LNAV/VNAV DA	1469-1½	401 (500-1½)		NA
LNAV MDA	1420-1	352 (400-1)		NA
<b>C</b> CIRCLING	1580-1 512 (600-1)	1780-1 712 (800-1)	1800-2 732 (800-2)	NA