

WAAS CH <b>82115</b> <b>W19A</b>	APP CRS <b>195°</b>	Rwy ldg <b>7012</b> TDZE <b>71</b> Apt Elev <b>80</b>
--	------------------------	---

# RNAV (GPS) RWY 19

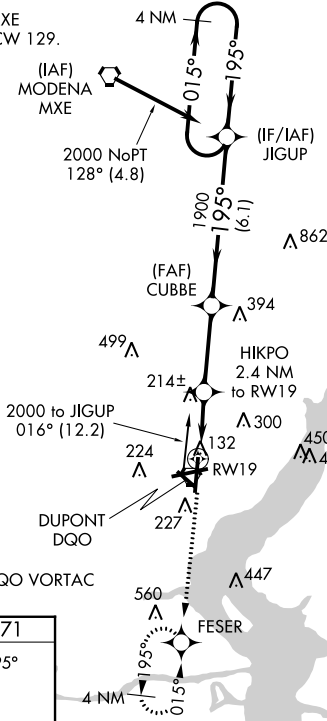
NEW CASTLE (ILG)

**▼** Baro-VNAV NA when using Philadelphia Intl altimeter setting. For uncompensated Baro-VNAV systems, LNAV/VNAV NA below -15°C (5°F) or above 49°C (120°F). DME/DME RNP-0.3 NA.  
**▲** Visibility reduction by helicopters NA. When local altimeter setting not received, use Philadelphia Intl altimeter setting: increase LPV DA to 425, LNAV/VNAV DA to 592, and all MDAs 60 feet; increase LPV all Cats and LNAV and Circling Cat D visibility ¼ SM.

MISSED APPROACH:  
Climb to 2000 direct FESER and hold.

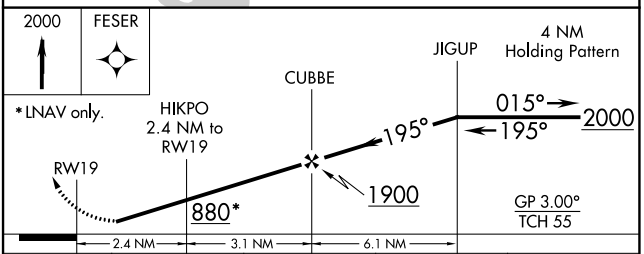
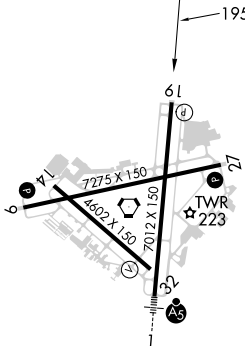
ATIS <b>123.95</b>	PHILADELPHIA APP CON <b>118.35 323.1</b>	WILMINGTON TOWER* <b>126.0 (CTAF) 352.05</b>	GND CON <b>121.7 275.8</b>	CLNC DEL <b>119.95</b>	UNICOM <b>122.95</b>
-----------------------	---	---	-------------------------------	---------------------------	-------------------------

Procedure NA for arrival on MXE  
VORTAC airway radials 056 CW 129.



Procedure NA for arrival on DQO VORTAC  
airway radials 053 CW 068.

ELEV 80	<b>D</b>	TDZE 71
---------	----------	---------



CATEGORY	A	B	C	D
LPV DA	371-1 300 (300-1)			
LNAV/VNAV DA	538-1¾ 467 (500-1¾)			
LNAV MDA	480-1	409 (400-1)	480-1¼	409 (400-1¼)
CIRCLING	540-1 460 (500-1)	560-1 480 (500-1)	600-1½ 520 (600-1½)	800-2¼ 720 (800-2¼)

REIL Rwy 9, 19 and 27  
HIRL Rwy 1-19 and 9-27  
MIRL Rwy 14-32

NE-3, 22 FEB 2024 to 21 MAR 2024

NE-3, 22 FEB 2024 to 21 MAR 2024