

HI-ILS Z or LOC Z RWY 14

LOC I-CZH 110.5	APCH CRS 137°	Rwy ldg TDZE Arpt Elev 7701 27 30
---------------------------	-------------------------	---

[USAF]

JACKSONVILLE INTL (KJAX)

DME required. RADAR required for procedure entry.
 * When ALS inop, increase vis to ¾ mile.
 ** When ALS inop, increase vis to 1 mile.

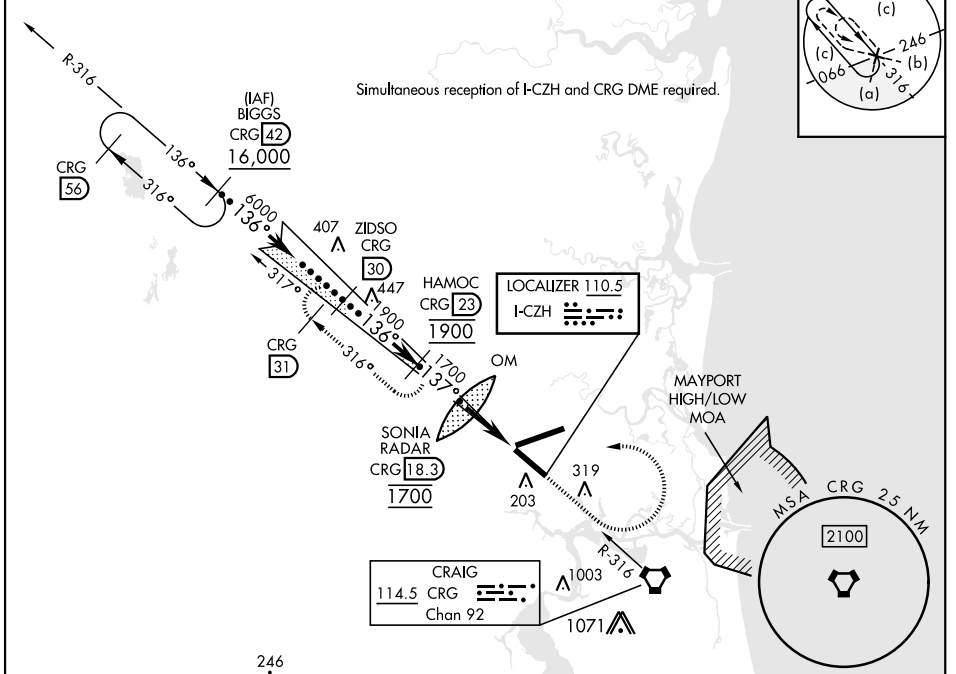
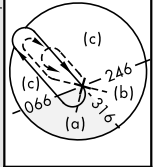


MISSED APPROACH: Climb to 2000 then climbing left turn to 4000 via CRG R-316 to HAMOC 23 DME and hold.

ATIS 125.85	APP CON 119.0 269.9	TOWER 118.3 317.7	GND CON 121.9 348.6	CLNC DEL 119.5 290.275
-----------------------	-------------------------------	-----------------------------	-------------------------------	----------------------------------

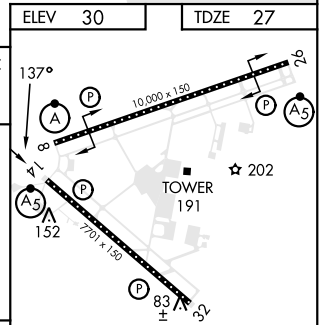
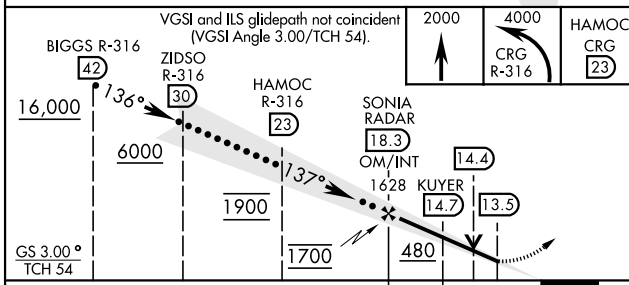
Rwy 14 helicopter visibility reduction below ¾ mile NA. Autopilot coupled approach NA below 750.

Simultaneous reception of I-CZH and CRG DME required.



246

EMERG SAFE ALT 100 NM 2800 FROM CRG VORTAC



	ELEV 30		TDZE 27	
CATEGORY	C	D	E	
S-ILS 14 *	227-½	200 (200-½)		
S-LOC 14 **	380-¾	353 (400-¾)		
CIRCLING	580-1½ 550 (600-1½)	640-2 610 (700-2)	760-2½ 730 (800-2½)	
	REIL Rwy 32 HIRL Rwy 8-26, 14-32 TDZL/CL Rwy 8-26, 14 FAF to MAP 4.8 NM			
	Knots	120	140	160 180 200
	Min:Sec	2:24	2:03	1:48 1:36 1:26

HI-ILS Z or LOC Z RWY 14

SE-3, 22 FEB 2024 to 21 MAR 2024

SE-3, 22 FEB 2024 to 21 MAR 2024