

CAMRN FOUR ARRIVAL

NEW YORK, NEW YORK

NEW YORK APP CON
 128.125 269.0
 JOHN F KENNEDY INTL D-ATIS
 128.725 (ARR/DEP)
 117.7 (ARR-NE)
 115.4 (ARR-SW)
 REPUBLIC ATIS
 126.65

DEER PARK
 117.7 DPK
 Chan 124

JOHN F KENNEDY INTL

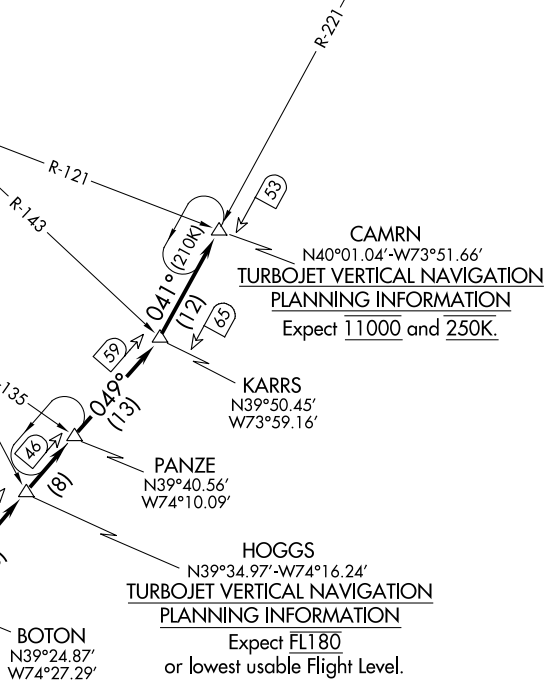
REPUBLIC

ROBBINSVILLE
 113.8 RBV
 Chan 85

COYLE
 113.4 CYN
 Chan 81

ATLANTIC CITY
 108.6 ACY
 Chan 23

SEA ISLE
 114.8 SIE
 Chan 95
 N39°05.73'
 W74°48.02'
 L-34, H-10-12



CAMRN
 N40°01.04'-W73°51.66'
TURBOJET VERTICAL NAVIGATION
PLANNING INFORMATION
 Expect 11000 and 250K.

KARRS
 N39°50.45'
 W73°59.16'

PANZE
 N39°40.56'
 W74°10.09'

HOGGS
 N39°34.97'-W74°16.24'
TURBOJET VERTICAL NAVIGATION
PLANNING INFORMATION
 Expect FL180
 or lowest usable Flight Level.

NOTE: STAR applicable to Turbojet aircraft only.

NOTE: Chart not to scale.

ARRIVAL ROUTE DESCRIPTION

From over SIE VORTAC via SIE R-049 and DPK R-221 to CAMRN INT. Expect radar vectors to final approach fix in use.

CAMRN FOUR ARRIVAL

NEW YORK, NEW YORK

NE-2, 21 JUN 2018 to 19 JUL 2018

NE-2, 21 JUN 2018 to 19 JUL 2018