

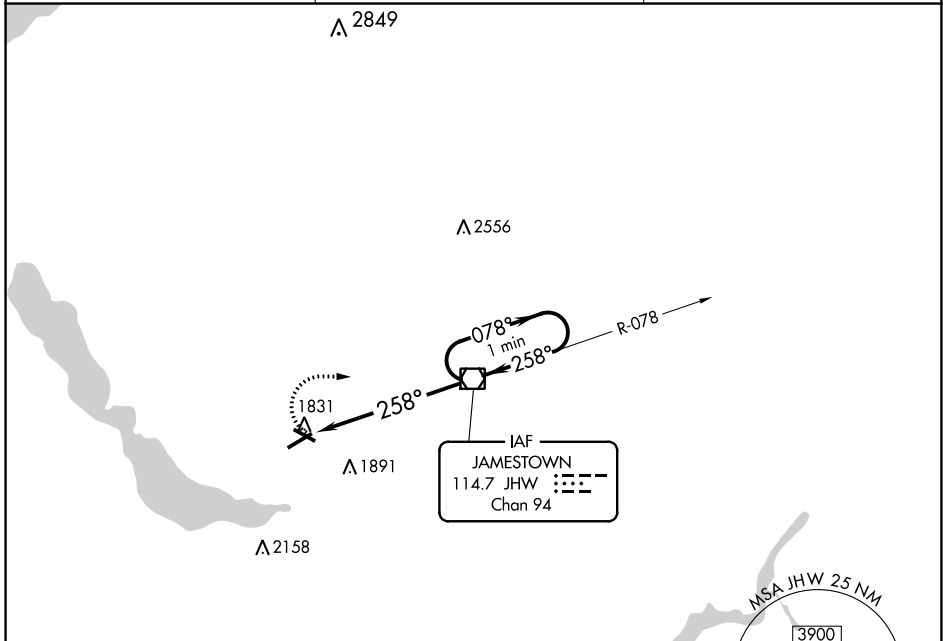
VOR/DME JHW <b>114.7</b> Chan <b>94</b>	APP CRS <b>258°</b>	Rwy Idg TDZE <b>1721</b> Apt Elev <b>1723</b>	<b>5300</b>
---	------------------------	---	-------------

# VOR RWY 25

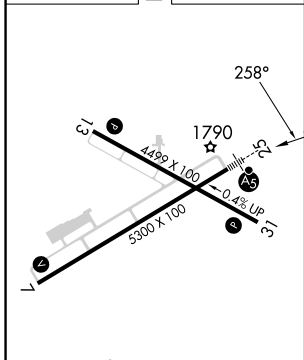
CHAUTAUQUA COUNTY/JAMESTOWN (JHW)

<p>⚠ Inoperative table does not apply. Circling to Rwy 13/31 NA at night.</p>	<p>MALSR</p>	<p>MISSED APPROACH: Climbing right turn to 3700 direct JHW VOR/DME and hold.</p>

AWOS-3PT <b>118.425</b>	BUFFALO APP CON * <b>126.05</b>	UNICOM <b>122.975 (CTAF) 1</b>
----------------------------	------------------------------------	-----------------------------------



ELEV 1723	<b>D</b>	TDZE 1721
-----------	----------	-----------



REIL Rwy 31 1	MIRL Rwy 13-31 1	HIRL Rwy 7-25 1			
FAF to MAP 6.1 NM					
Knots	60	90	120	150	180
Min:Sec	6:06	4:04	3:03	2:26	2:02

3700	JHW	JHW VOR/DME	One Minute Holding Pattern	
CATEGORY	A	B	C	D
S-25	2180-1	459 (500-1)	2180-1¼ 459 (500-1¼)	2180-1½ 459 (500-1½)
<input checked="" type="checkbox"/> CIRCLING	2200-1	477 (500-1)	2260-1½ 537 (600-1½)	2340-2 617 (700-2)

NE-2, 22 FEB 2024 to 21 MAR 2024

NE-2, 22 FEB 2024 to 21 MAR 2024