

WAAS CH 48932 W14A	APP CRS 140°	Rwy Idg 3205 TDZE 876 Apt Elev 876
--	------------------------	---

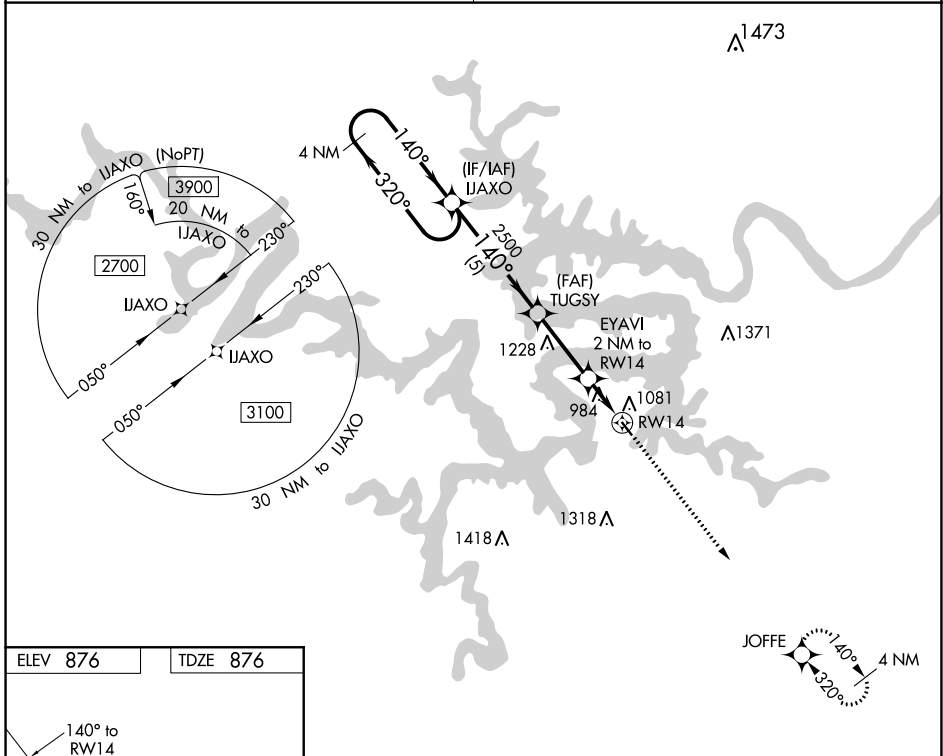
RNAV (GPS) RWY 14

GRAND GLAIZE-OSAGE BEACH (K15)

⚠ NA Use Kaiser Lake Ozark altimeter setting; when not received, use Camden ton altimeter setting and increase all MDA 40 feet. DME/DME RNP- 0.3 NA. Procedure NA at night. Helicopter visibility reduction below 1 SM NA.

MISSED APPROACH: Climb to 2700 direct JOFFE and hold.

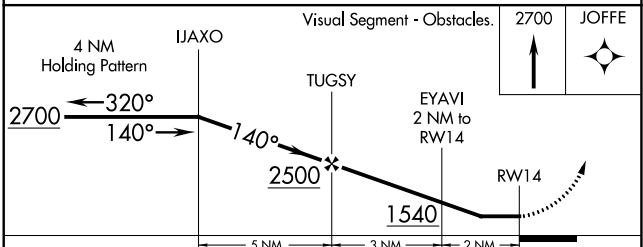
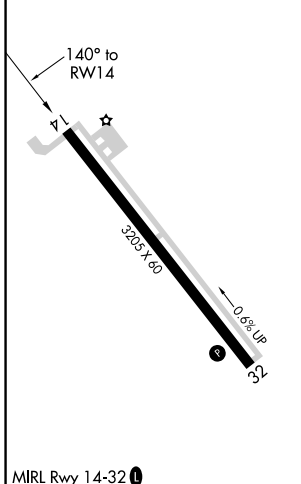
MIZZU APP CON 124.1 353.925	UNICOM 122.8 (CTAF) 0
---------------------------------------	---------------------------------



NC-3, 22 FEB 2024 to 21 MAR 2024

NC-3, 22 FEB 2024 to 21 MAR 2024

ELEV 876	TDZE 876
----------	----------



CATEGORY	A	B	C	D
LP MDA	1300-1	424 (500-1)		NA
LNAV MDA	1360-1	484 (500-1)		NA
CIRCLING	1420-1	544 (600-1)		NA

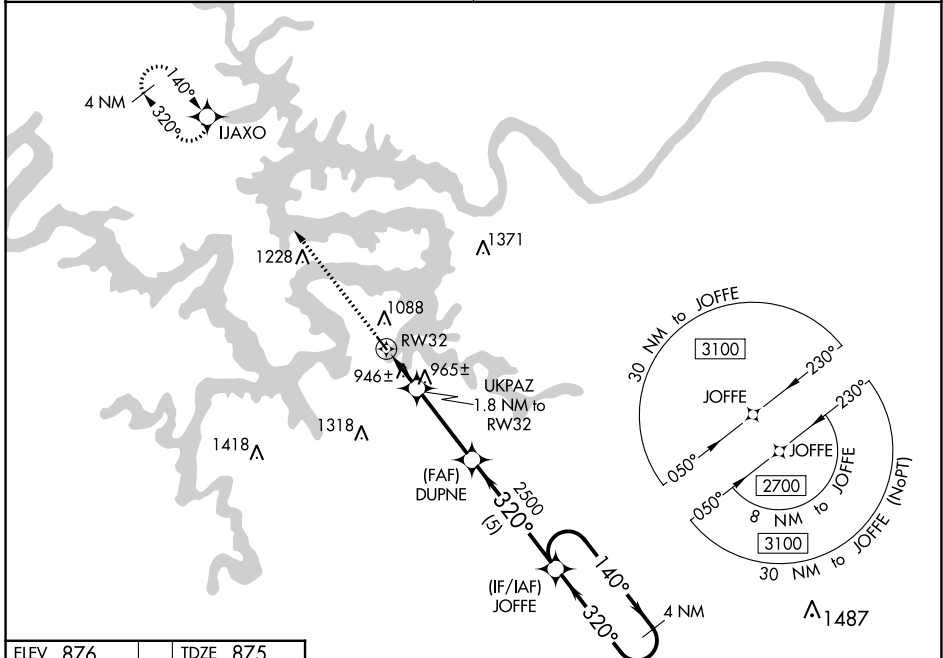
WAAS CH 86832 W32A	APP CRS 320°	Rwy Idg 3205 TDZE 875 Apt Elev 876
--	------------------------	---

RNAV (GPS) RWY 32

GRAND GLAIZE-OSAGE BEACH (K15)

<p>⚠ NA DME/DME RNP-0.3 NA. Use Kaiser Lake Ozark altimeter setting; when not received, use Camdenon altimeter setting and increase all MDA 40 feet. Procedure NA at night. Helicopter visibility reduction below 1 SM NA.</p>	<p>MISSED APPROACH: Climb to 2700 direct IJAXO and hold.</p>
---	--

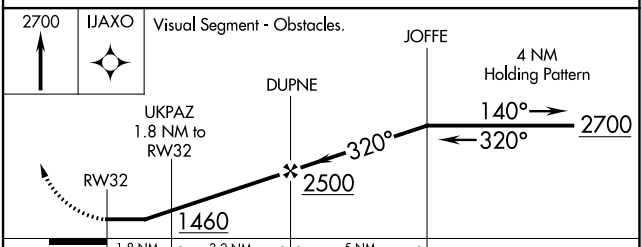
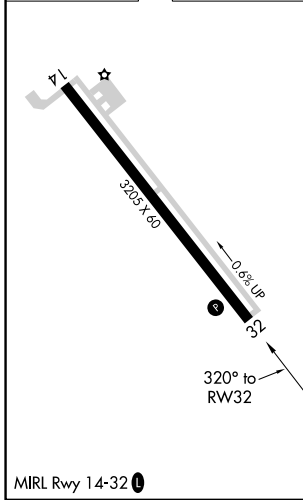
<p>MIZZU APP CON 124.1 353.925</p>	<p>UNICOM 122.8 (CTAF) 1</p>
---	---



NC-3, 22 FEB 2024 to 21 MAR 2024

NC-3, 22 FEB 2024 to 21 MAR 2024

ELEV 876	TDZE 875
----------	----------



CATEGORY	A	B	C	D
LP MDA	1220-1	345 (400-1)		NA
LNAV MDA	1240-1	365 (400-1)		NA
CIRCLING	1420-1	544 (600-1)		NA

VOR/DME SHY 108.4 Chan 21	APP CRS 318°	Rwy Idg 3205 TDZE 875 Apt Elev 876
--	------------------------	---

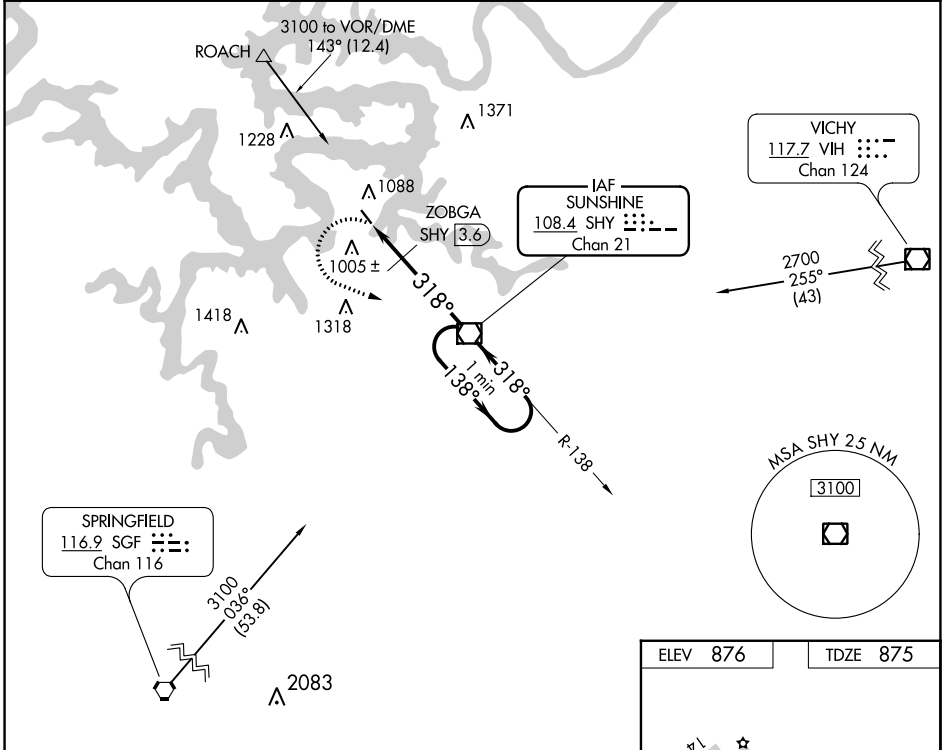
VOR RWY 32
GRAND GLAIZE-OSAGE BEACH (K15)

▼ Helicopter visibility reduction below 1 SM NA. Procedure NA at night.
▲ NA Use Kaiser Lake Ozark altimeter setting; when not received, use
Camdenton altimeter setting and increase all MDA 40 feet.

MISSED APPROACH: Climbing left turn to 2700 direct SHY VOR/DME and hold.

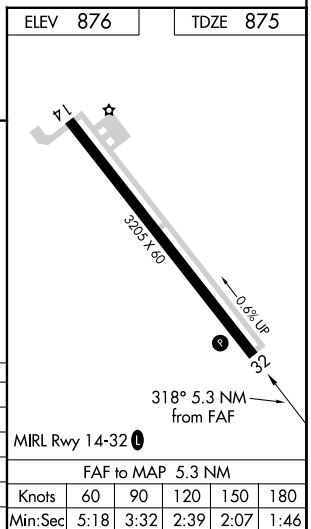
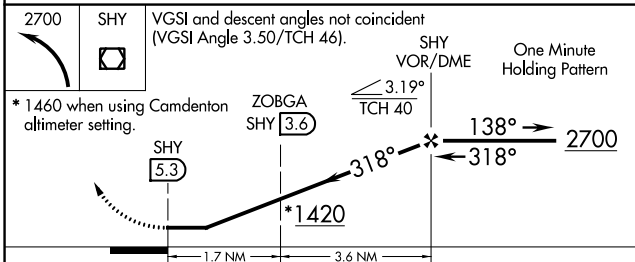
MIZZU APP CON
124.1 353.925

UNICOM
122.8 (CTAF) 0



NC-3, 22 FEB 2024 to 21 MAR 2024

NC-3, 22 FEB 2024 to 21 MAR 2024



CATEGORY	A	B	C	D
S-32	1420-1	545 (600-1)		NA
CIRCLING	1420-1	544 (600-1)		NA
ZOBGA FIX MINIMUMS (DME REQUIRED)				
S-32	1280-1	405 (500-1)		NA
CIRCLING	1420-1	544 (600-1)		NA