

WAAS CH 40036 W21A	APP CRS 211°	Rwy Idg TDZE 899 Apt Elev 899	3894
--	------------------------	---	-------------

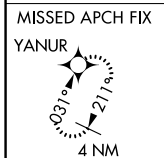
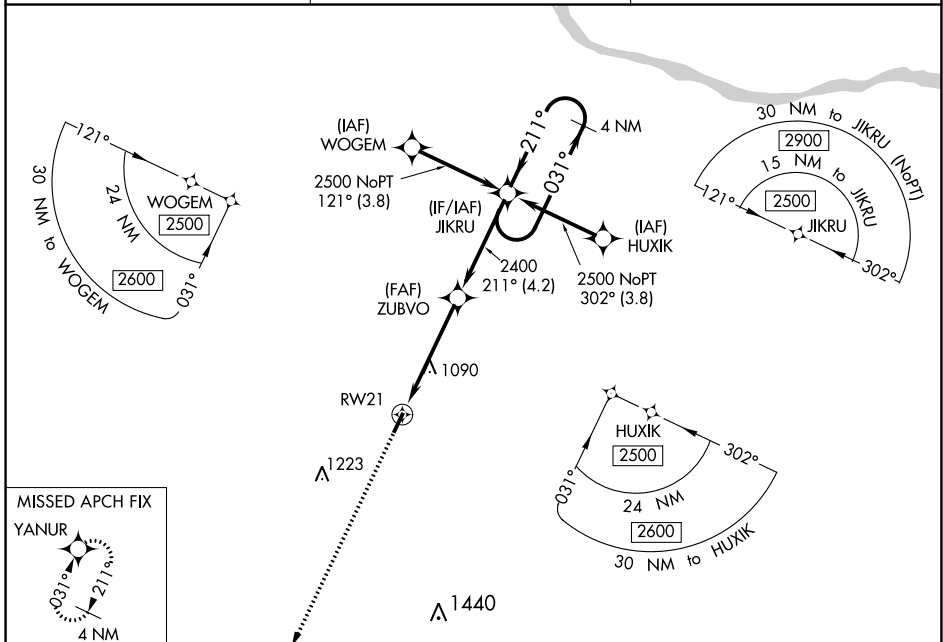
RNAV (GPS) RWY 21

GENE SNYDER (K62)

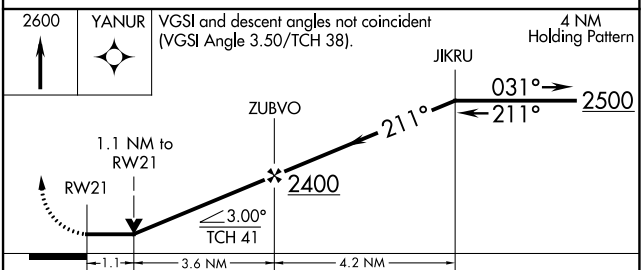
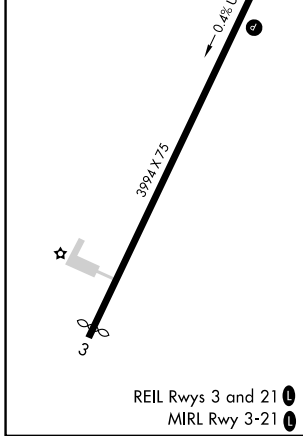
⚠ DME/DME RNP-0.3 NA. When local altimeter setting not received, use Cincinnati/Northern Kentucky Intl altimeter setting and increase all MDA 60 feet. Night landing: Rwy 03 NA. Helicopter visibility reduction below 3/4 SM NA. VDP NA when using Cincinnati/Northern Kentucky Intl altimeter setting.

MISSED APPROACH: Climb to 2600 direct YANUR and hold.

AWOS-3 123.825	CINCINNATI APP CON 121.0 254.25	UNICOM 122.7 (CTAF) 0
--------------------------	---	---------------------------------



ELEV 899	TDZE 899
-----------------	-----------------



CATEGORY	A	B	C	D
LP MDA	1340-1	441 (500-1)		NA
LNAV MDA	1360-1	461 (500-1)		NA
C CIRCLING	1400-1	501 (600-1)		NA

SE-1, 22 FEB 2024 to 21 MAR 2024

SE-1, 22 FEB 2024 to 21 MAR 2024

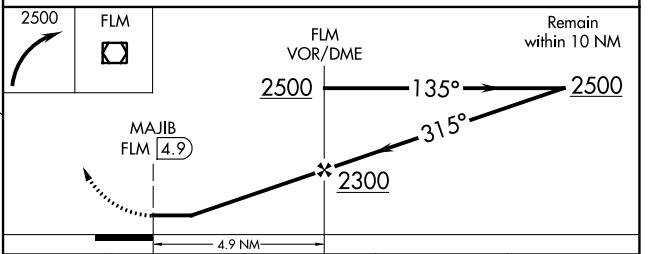
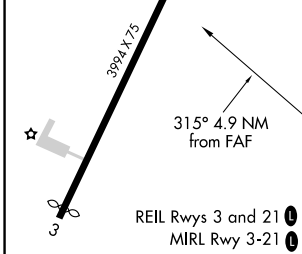
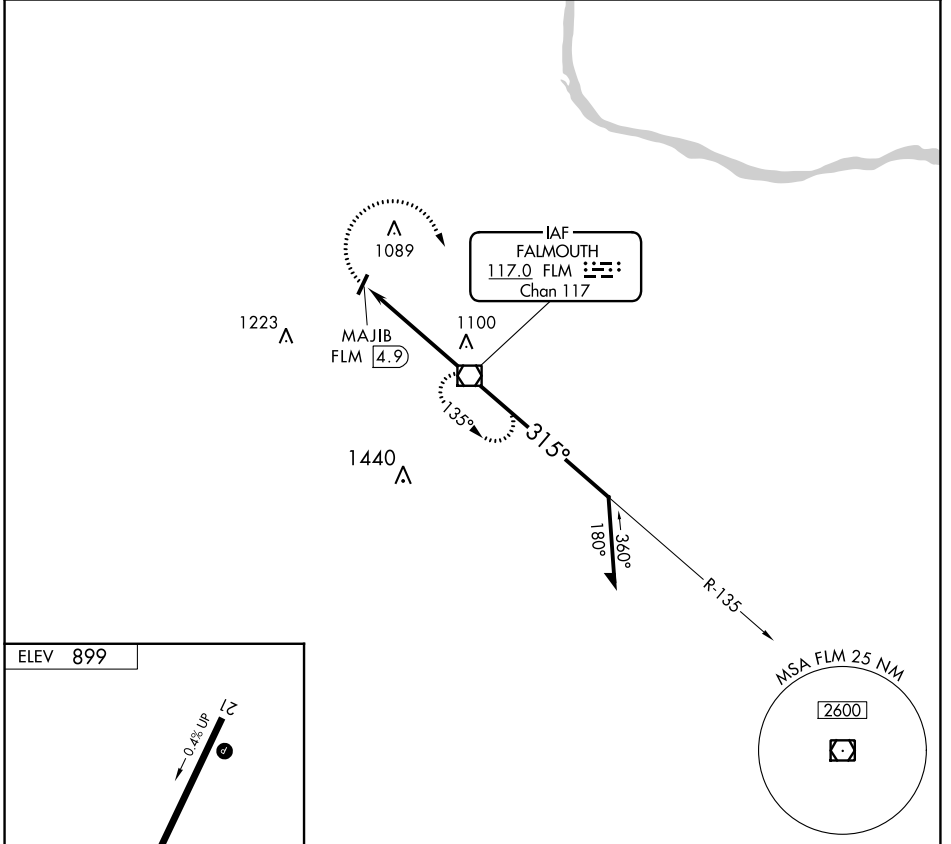
VOR/DME FLM 117.0 Chan 117	APP CRS 315°	Rwy Idg TDZE Apt Elev N/A N/A 899
--	------------------------	---

VOR-A
GENE SNYDER (K62)

▼ Night landing: Rwy 03 NA. When local altimeter setting not received, use Cincinnati/Northern Kentucky Intl altimeter setting and increase all MDA 60 feet. Helicopter visibility reduction below 1 SM NA.

▲NA MISSED APPROACH: Climbing right turn to 2500 direct FLM VOR/DME and hold.

AWOS-3 123.825	CINCINNATI APP CON 121.0 254.25	UNICOM 122.7 (CTAF) 0
--------------------------	---	---------------------------------



FAF to MAP 4.9 NM					CATEGORY	A	B	C	D
Knots	60	90	120	150	180	1400-1		501 (600-1)	
Min:Sec	4:54	3:16	2:27	1:58	1:38	CIRCLING		NA	

SE-1, 22 FEB 2024 to 21 MAR 2024

SE-1, 22 FEB 2024 to 21 MAR 2024